

PLAT AND RECORD

MICROFILMED

COUNTY BUILDING
CITY OF JANESVILLE

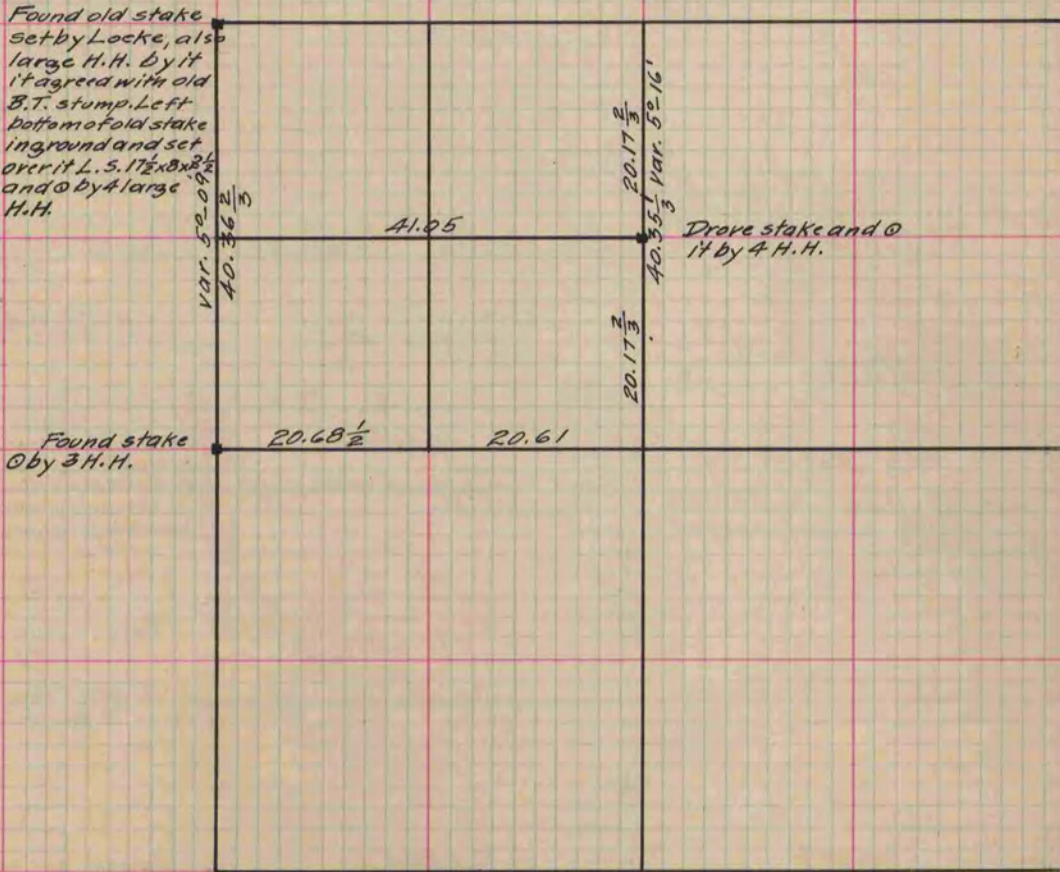
Of a Survey on Section 12 T 2 R 10 E. of the 4 P. M. in Spring Valley Township

Rock County, Wisconsin, made May the 24th. 1887

I hereby certify that the following is a correct record of said survey as made by me.

(Signed) Edward Ruger

County Surveyor.



(See book 1 Page 246 County Surveyors Record)

Copied from P. 338 Vol 2 County Surveyors Record