

MICROFILMED

PLAT AND RECORD

COUNTY BUILDING
CITY OF JANESVILLE

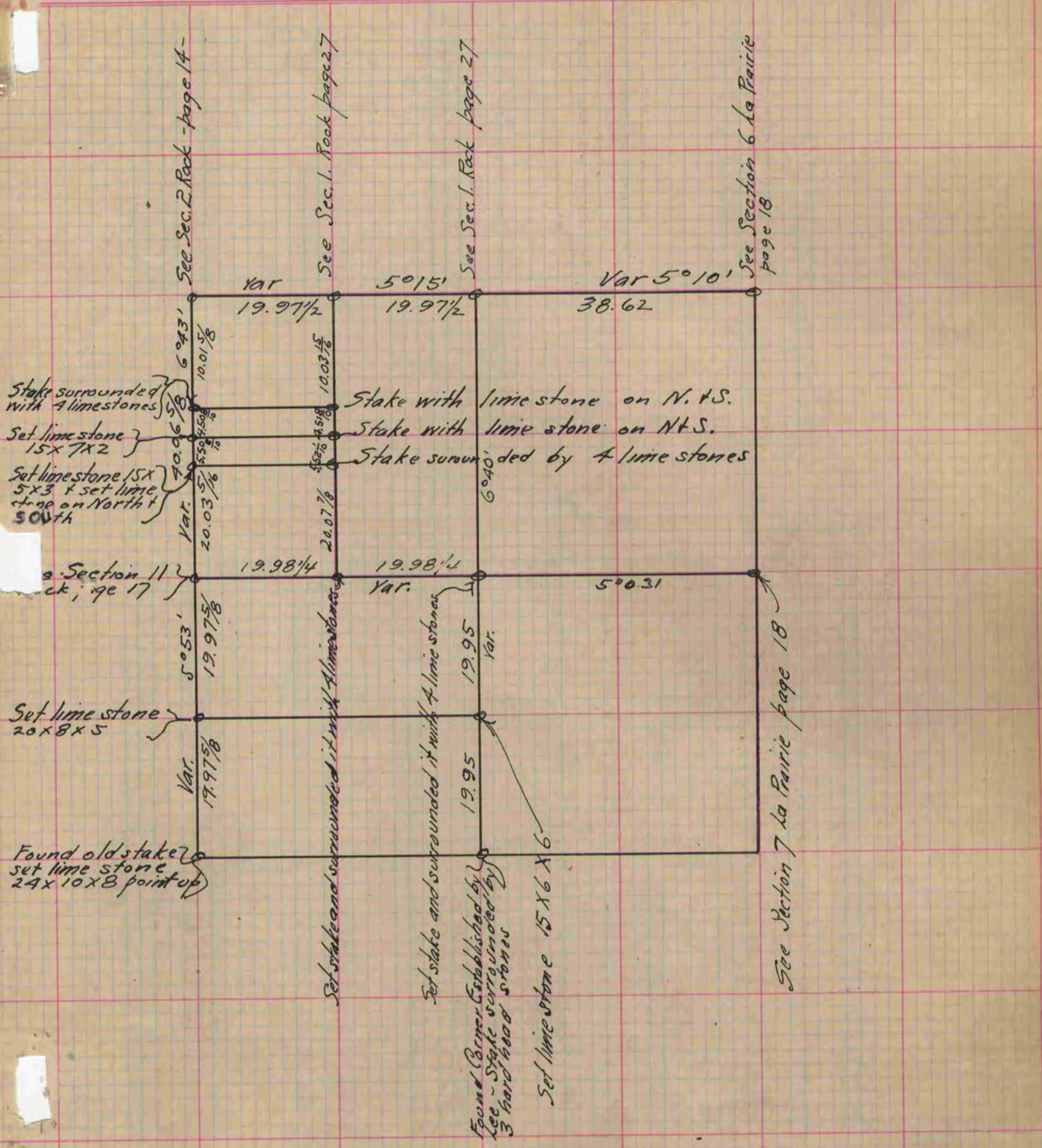
41
V-2

Of a Survey on Section 12 T 2 R 12 E. of the 4 P. M. in Rock Township

Rock County, Wisconsin, made Oct. 1st & Nov. the 4th 1870

I hereby certify that the following is a correct record of said survey as made by me.

(Signed) Edward Ruger } Deputy
R.H.B. } County Surveyor.



Copied from page 28 Vol. 2. Original County Surveyors Record