

PLAT AND RECORD

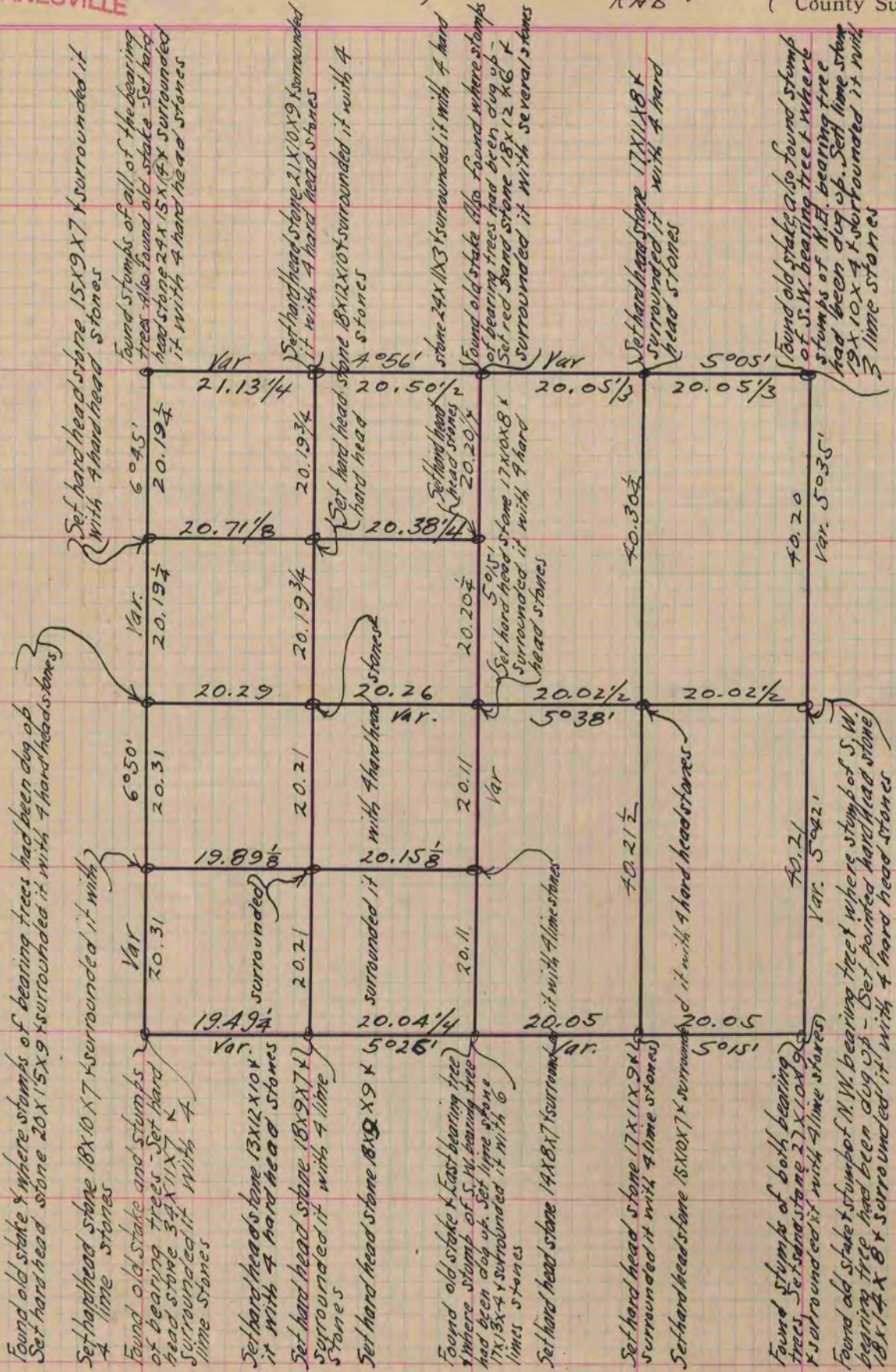
Of a Survey on Section 19 T 1 R 11 E. of the 4 P. M. in Newark Township

Rock County, Wisconsin, made November the 21, 22 + 23 1870

I hereby certify that the following is a correct record of said survey as made by me.

COUNTY BUILDING
CITY OF JANESVILLE

(Signed) Edward Ruger { Deputy
RNB County Surveyor.



Copied from page 28 Vol. 2 Original County Surveyors Record