

MICROFILMED PLAT AND RECORD

49
V-2

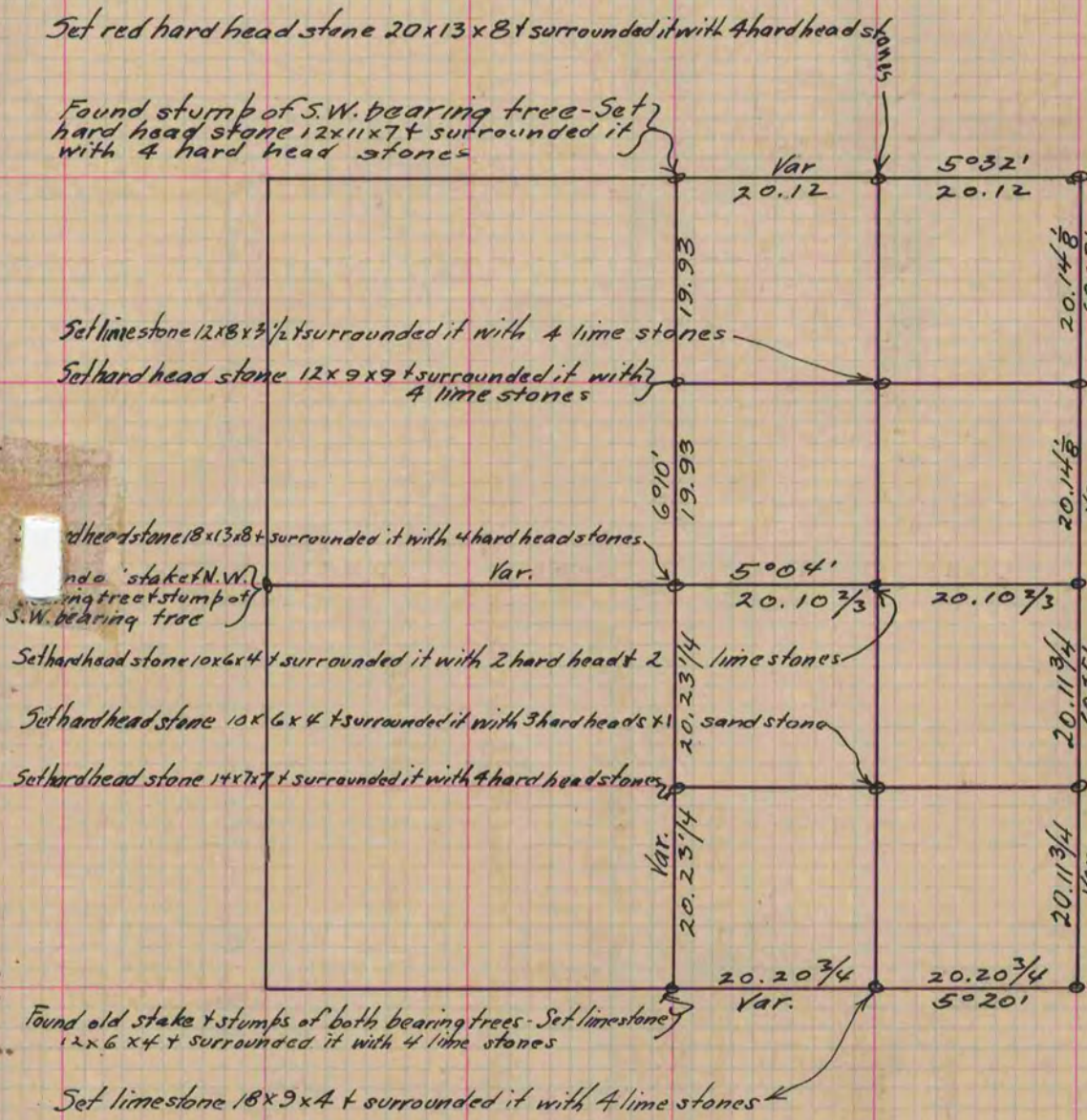
COUNTY BUILDING
CITY OF JANESVILLE

Of a Survey on Section 23 T 1 R 10 E. of the 4 P. M. in Avon Township

Rock County, Wisconsin, made December the 3rd 1870

I hereby certify that the following is a correct record of said survey as made by me.

(Signed) Edward R. Ruger Deputy
R. H. B. County Surveyor.



See plat of Section 24 Avon Page 31 (48) For
Corners established on this line.

Copied from page 32 Vol. R. Original County Surveyors Record