

PLAT AND RECORD

PLANNED COUNTY BUILDING
CITY OF JANESVILLE

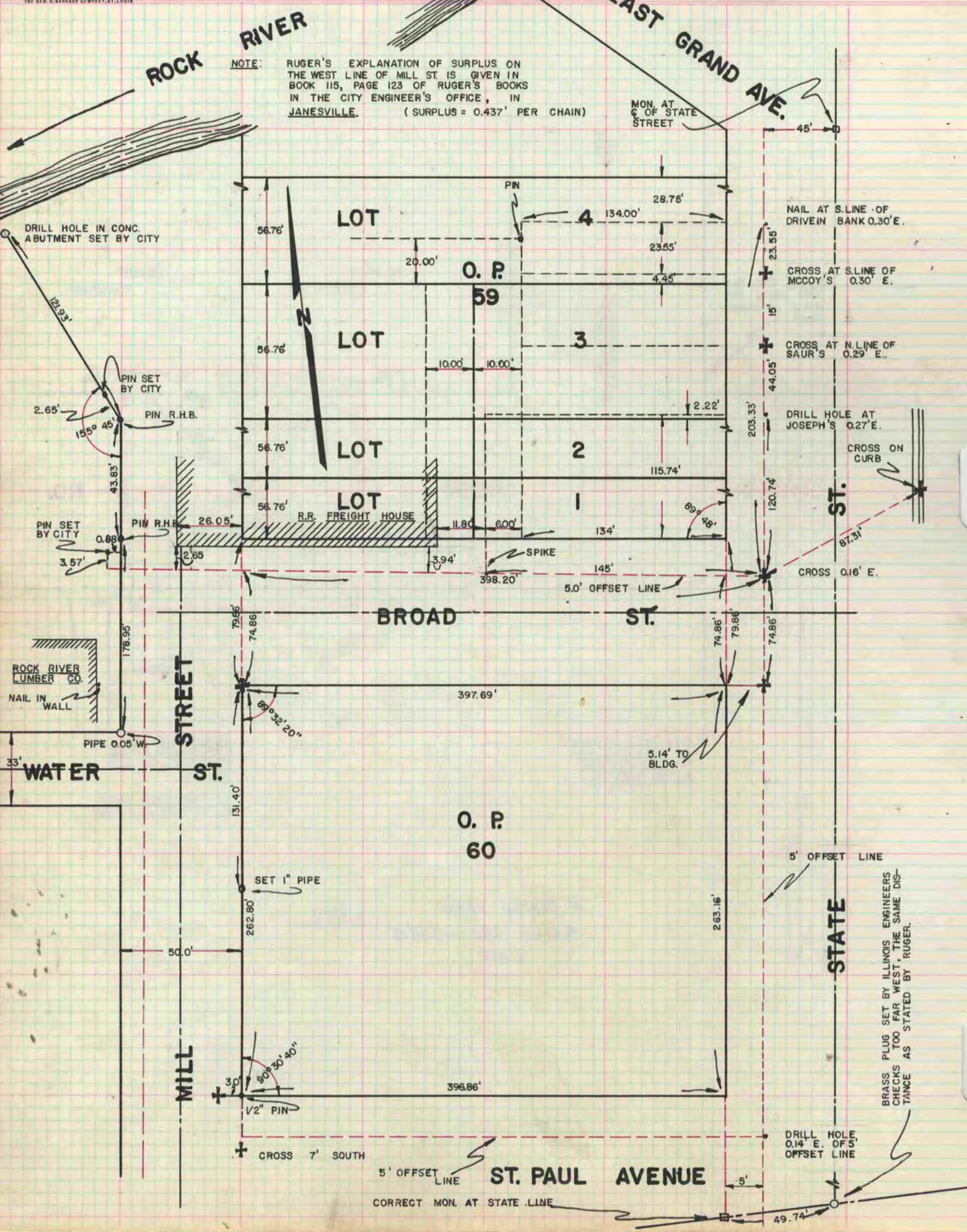
Of a Survey on Section 35. (S.E. 1/4) T. 1. R. 12. E. of the 4 P. M. in CITY OF BELOIT Township

Rock County, Wisconsin, made APRIL the 10TH 1961

I hereby certify that the following is a correct record of said survey as made by me.

R. B. Gorman
County Surveyor.

NOTE: RUGER'S EXPLANATION OF SURPLUS ON THE WEST LINE OF MILL ST. IS GIVEN IN BOOK 115, PAGE 123 OF RUGER'S BOOKS IN THE CITY ENGINEER'S OFFICE, IN JANESVILLE. (SURPLUS = 0.437' PER CHAIN)



BRASS PLUG SET BY ILLINOIS ENGINEERS CHECKS TOO FAR WEST, THE SAME DISTANCE AS STATED BY RUGER.

ST. PAUL AVENUE
CORRECT MON. AT STATE LINE