

MICROFILMED

PLAT AND RECORD

437
V-2

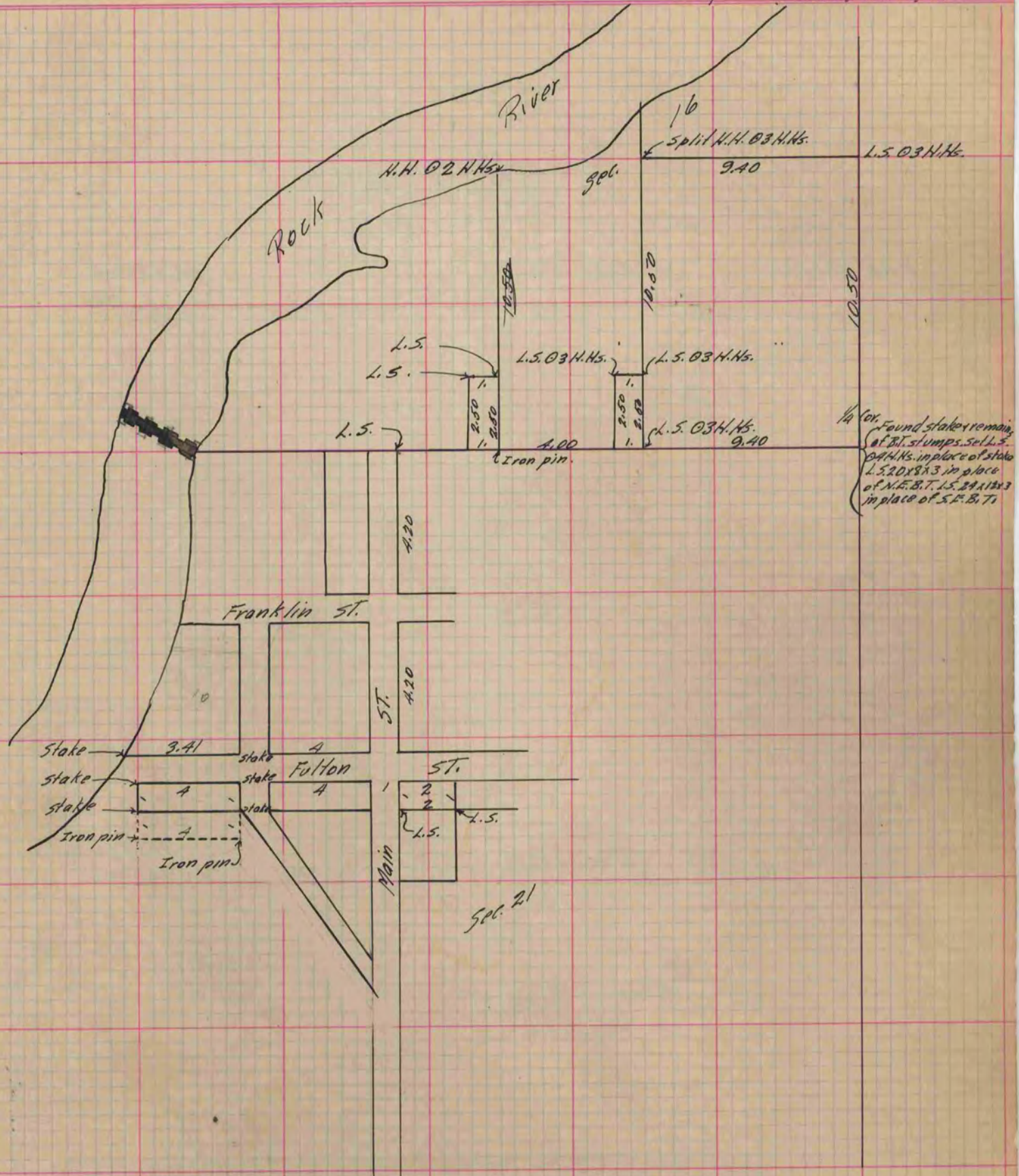
COUNTY BUILDING
CITY OF JANESVILLE
Township

Of a Survey on Section 21416 T 4 R 12 E. of the 4 P. M. in Fulton

Rock County, Wisconsin, made August the 28th + 30th 1889

I hereby certify that the following is a correct record of said survey as made by me.

(Signed) O. G. Bleedorn
County Surveyor.



Copied from P. 344 Vol. 2 County Surveyor's Record