

# PLAT AND RECORD

**MICROFILMED**

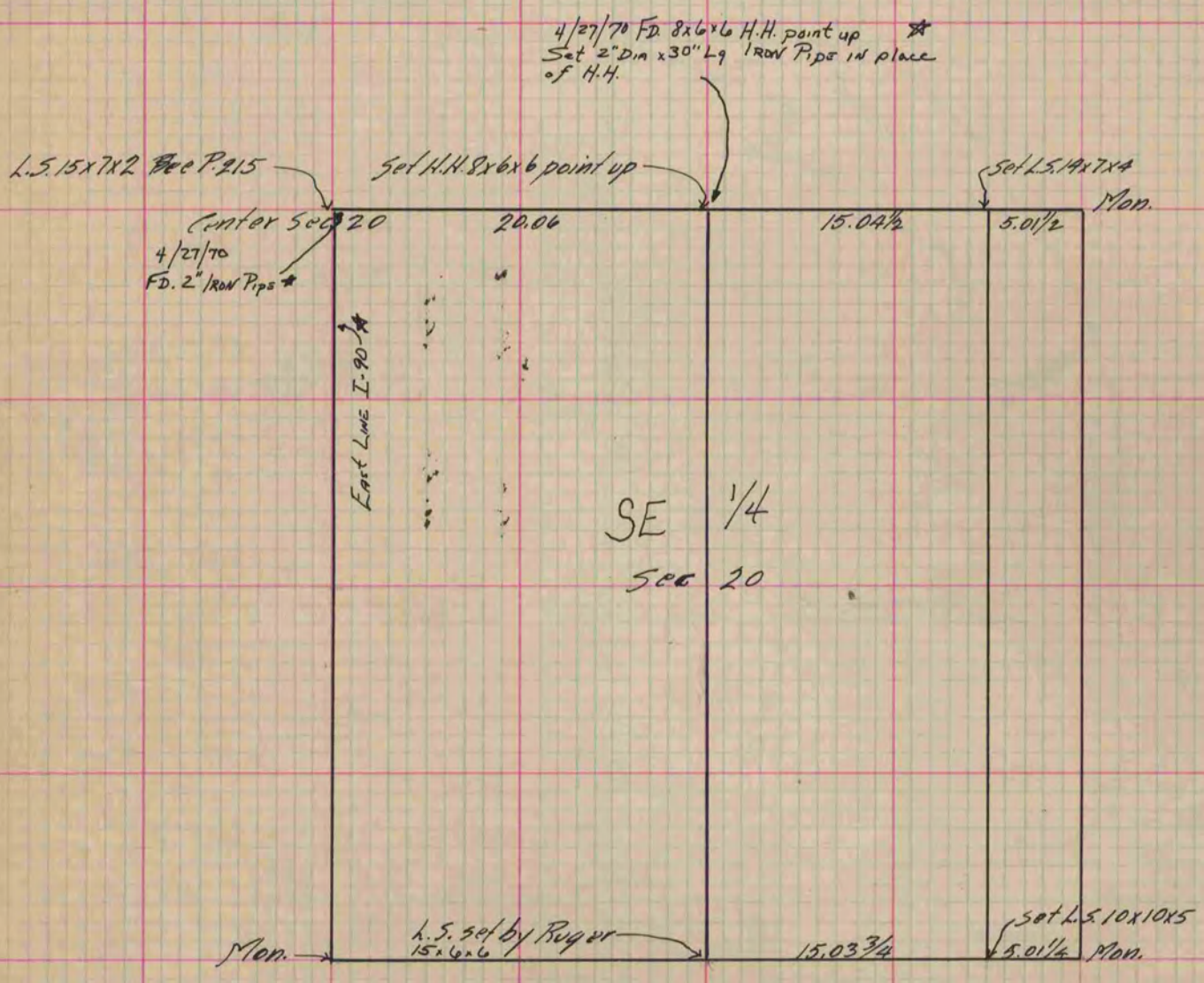
Of a Survey on Section 20 T 3 R 13 E. of the 4 P. M. in Harmony Township

Rock County, Wisconsin, made April the 15 1890

I hereby certify that the following is a correct record of said survey as made by me.

COUNTY BUILDING  
CITY OF JANESVILLE

(Signed) O.G. Bleedorn Rep  
R.H.B. County Surveyor.



\* Copied from Beloit Records  
12/11/75  
G.O.

Copied from P. 345 Vol. 2 County Surveyor's Record.