

V-2

MICROFILMED

PLAT AND RECORD

UNOFFICIAL COPY
NOT VALID FOR RECORDING

Of a Survey on Section 31 T 2 R 13 E. of the 4 P. M. in La Prairie Township

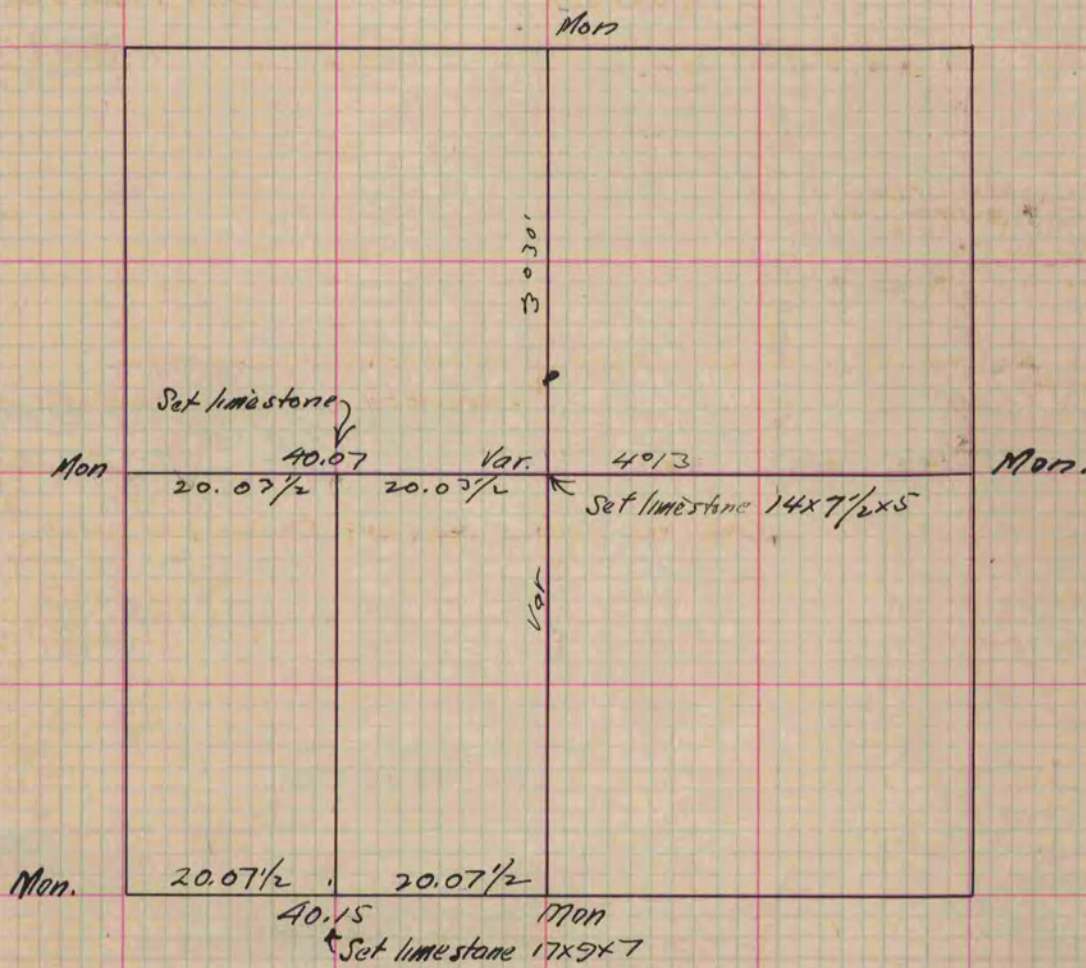
Rock County, Wisconsin, made Oct. the 13 1893

**COUNTY BUILDING
CITY OF JANESVILLE**

I hereby certify that the following is a correct record of said survey as made by me.

(Signed) O.G. Bleedorn

R. H. B. County Surveyor.



Copied from P. 374 Vol. 2. County Surveyors Record.