

PLAT AND RECORD

COUNTY BUILDING
CITY OF JANESVILLE

Of a Survey on Section $\frac{31}{6}$ T $\frac{4}{3}$ R $\frac{13}{13}$ E. of the 4 P. M. in MILTON HARMONY Township

Rock County, Wisconsin, made DECEMBER the 27 1960

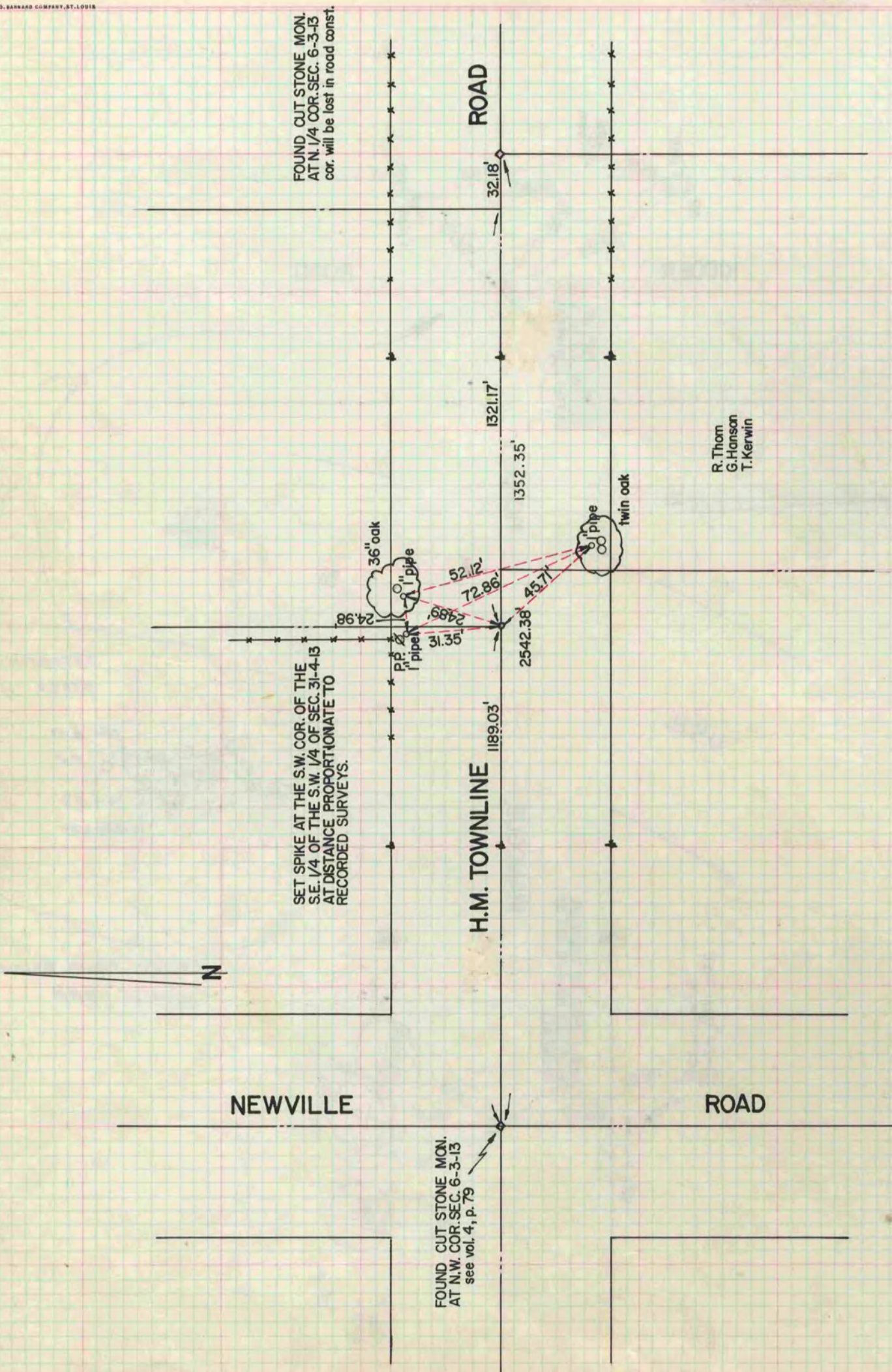
I hereby certify that the following is a correct record of said survey as made by me.

MICROFILMED

Milton Harmony

County Surveyor.

THE GEO. D. BARNARD COMPANY, ST. LOUIS



R. Thom
G. Hanson
T. Kerwin