

PLAT AND RECORD

MICROFILMED

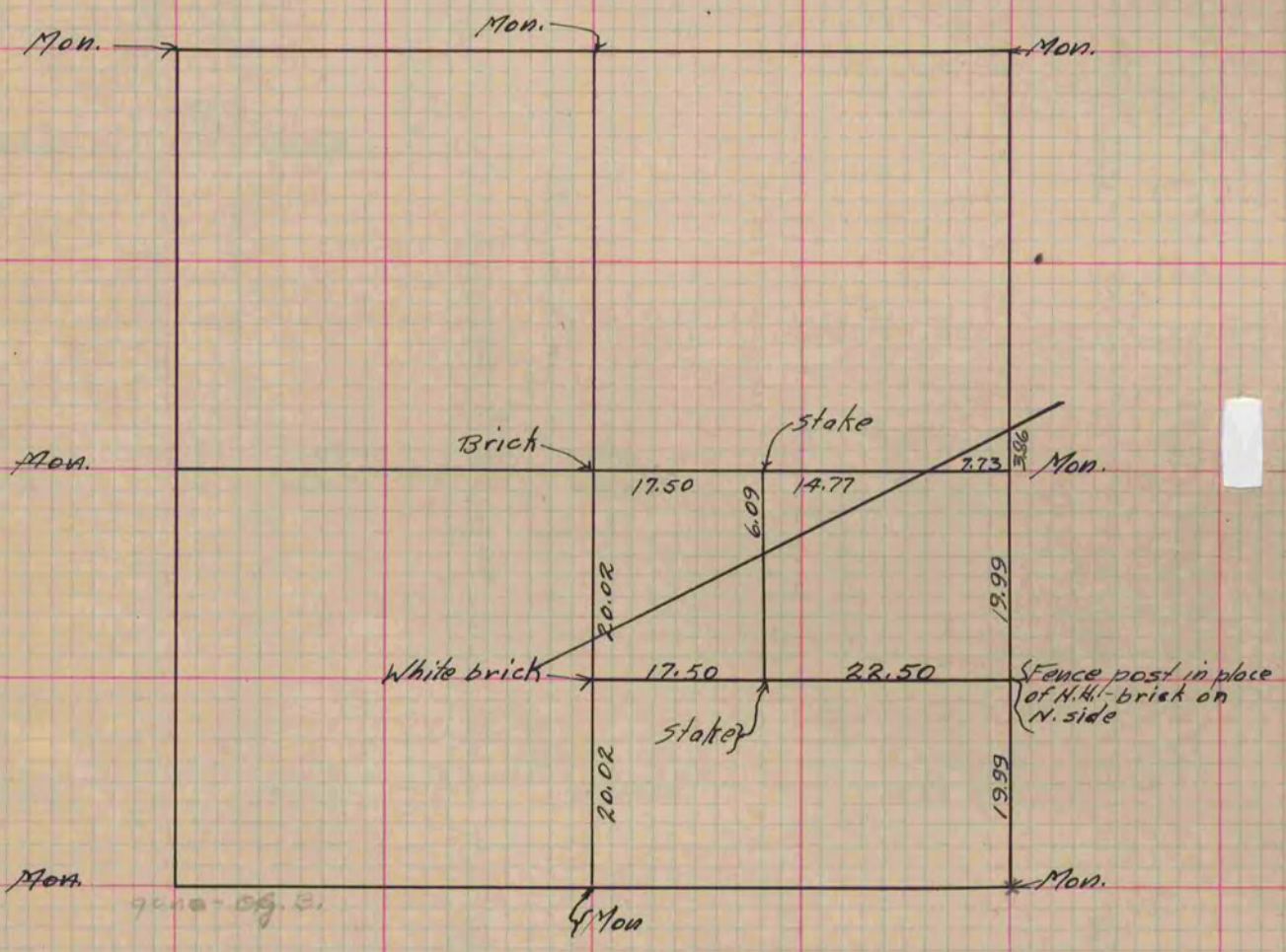
Of a Survey on Section 30 T 3 R 13 E. of the 4 P. M. in Harmony Township
Rock County, Wisconsin, made March the 25th 1879

I hereby certify that the following is a correct record of said survey as made by me.

COUNTY BUILDING
CITY OF JANESVILLE

(Signed) Edward Ruger

County Surveyor.



Copied from Page 219 Vol. 2 Original County Surveyor's Record.