

PLAT AND RECORD

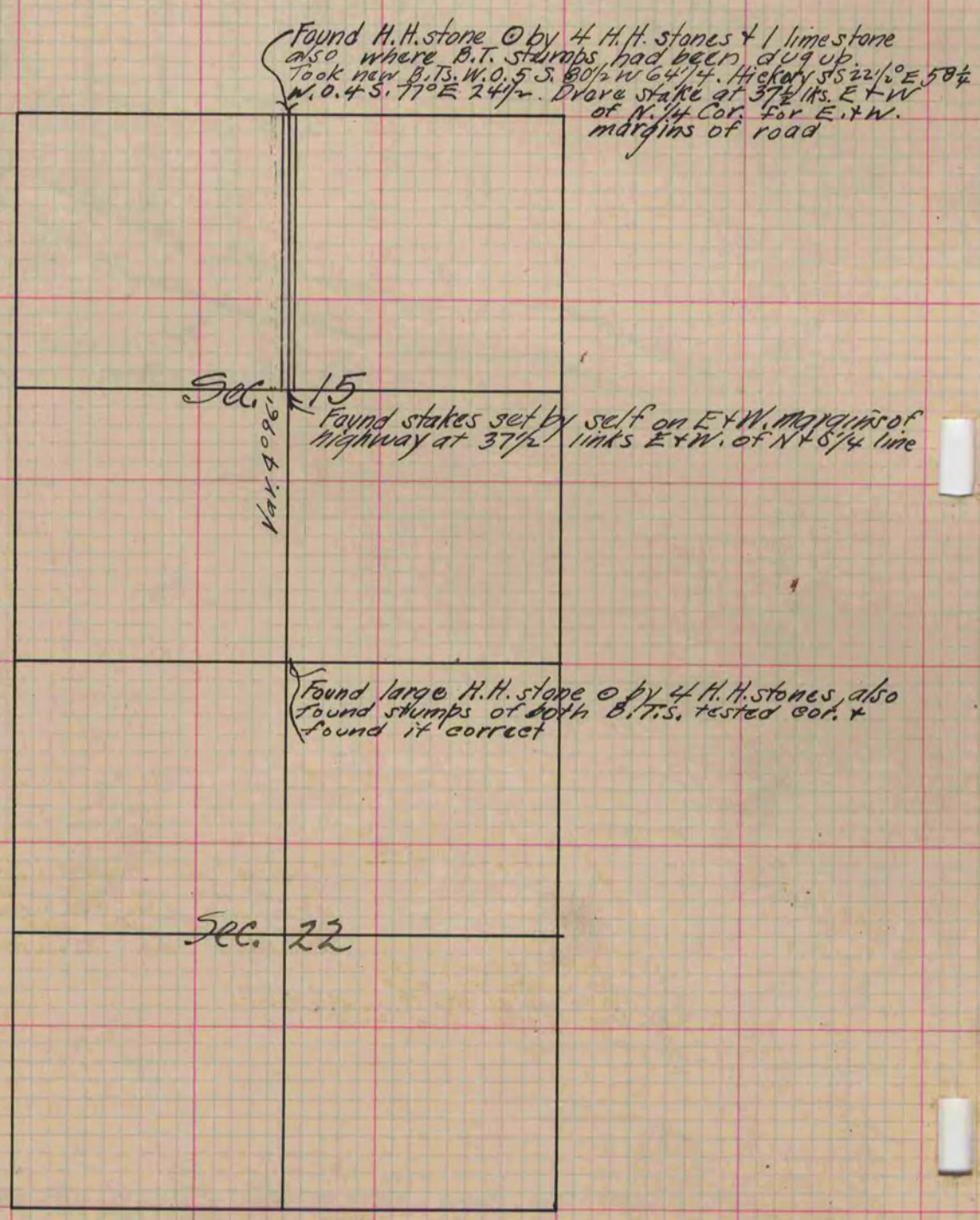
Of a Survey on Sections 22 + 15 T 3 R 14 E. of the 4 P. M. in Johnstown Township

Rock County, Wisconsin, made May the 17 1886

I hereby certify that the following is a correct record of said survey as made by me.

COUNTY BUILDING
CITY OF JANESVILLE

(Signed) Edward Roger
R.H.B. County Surveyor.



Copied from page 229 Vol. 2. County Surveyors Record.