

PLAT AND RECORD

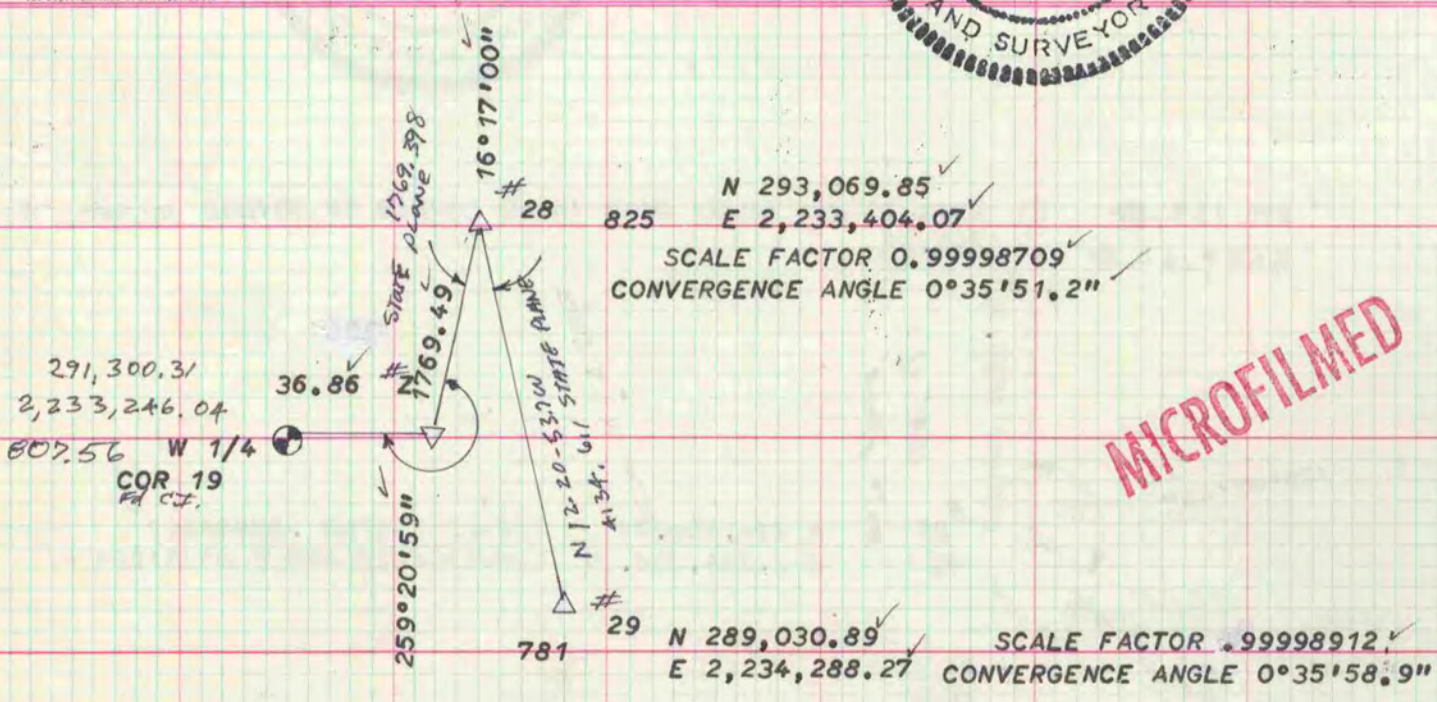
Of a Survey on Section 19 T 4 R 12 E. of the 4 P. M. in Township 82
Rock County, Wisconsin, made MAY the

I hereby certify that the following is a correct record of said survey as made by me.

COUNTY BUILDING
CITY OF JANESVILLE



County Surveyor.



MICROFILMED

TRAVERSE POINTS WERE ESTABLISHED BY AERO-METRIC ENGINEERING FOR A MAPPING PROJECT. ANGLES AND DISTANCES TO SECTION CORNERS WERE MEASURED BY ME.