

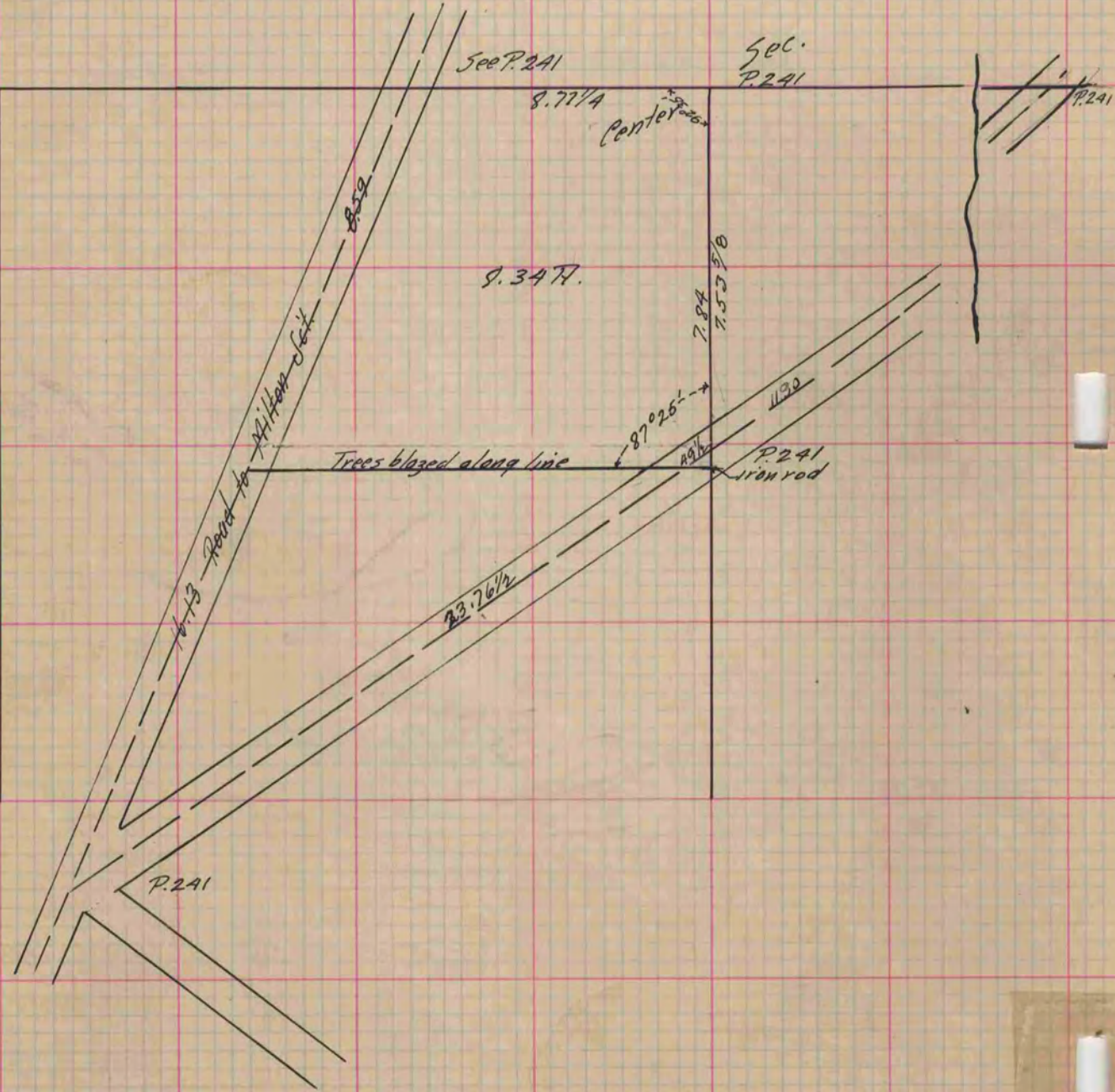
442
V-2 **MICROFILMED** PLAT AND RECORD

Of a Survey on Section 8 T 3 R 13 E. of the 4 P. M. in Harmony Township
Rock County, Wisconsin, made Feb. the 13 1891

I hereby certify that the following is a correct record of said survey as made by me.

COUNTY BUILDING
CITY OF JANESVILLE

(Signed) O. G. Bleedorn Dep.
R. H. B. County Surveyor.



Copied from P. 253 Vol. 2 County Surveyor's Record.