

MICROFILMED

PLAT AND RECORD

Of a Survey on Section 30 T 1 R 13 E. of the 4 P. M. in Turtle Township

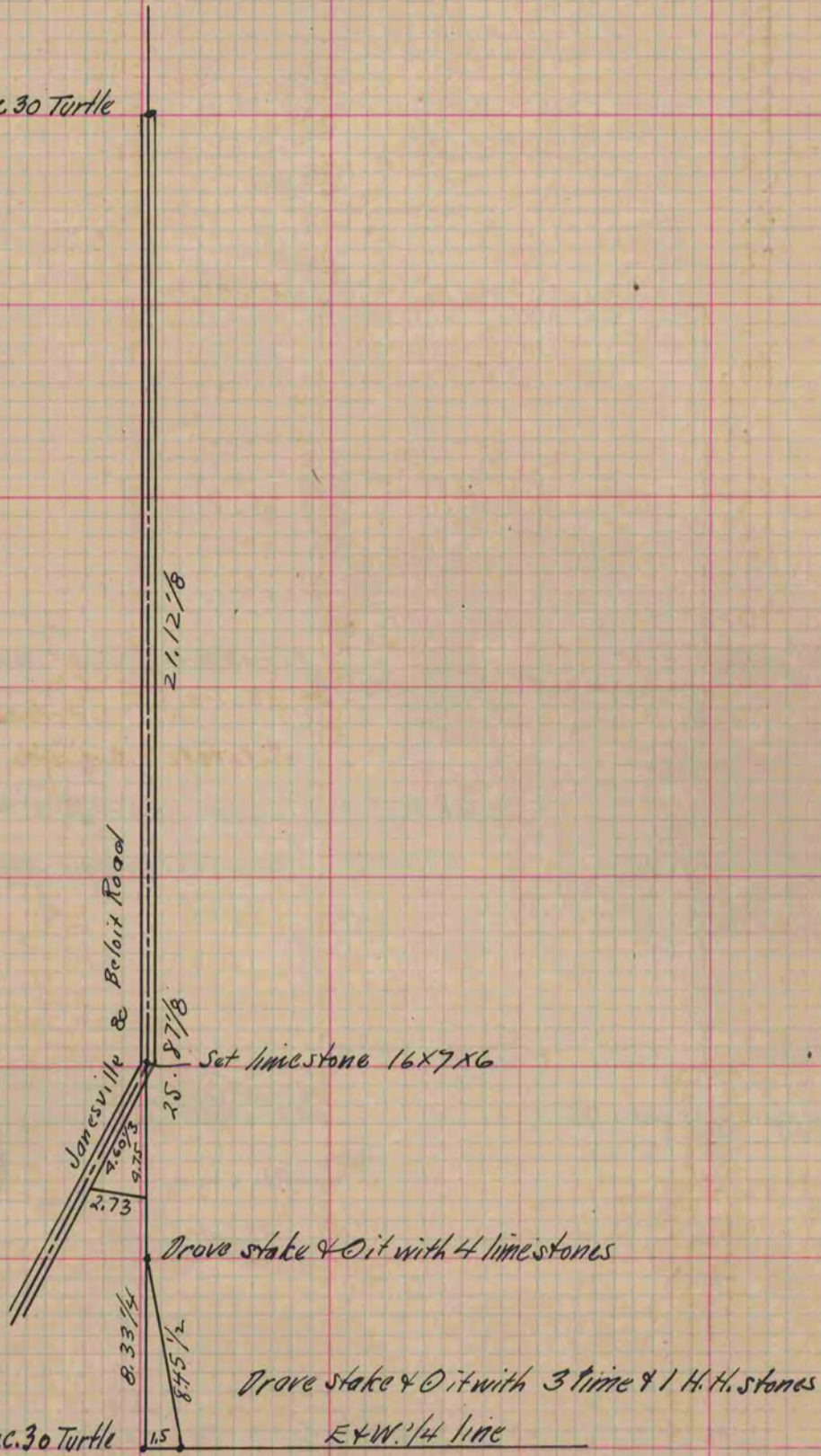
Rock County, Wisconsin, made August the 3 1886

I hereby certify that the following is a correct record of said survey as made by me.

COUNTY BUILDING
CITY OF JANESVILLE

(Signed) Edward Ruger
R. H. B. County Surveyor.

N.W. Cor. of Sec. 30 Turtle



Copied from page 232 Vol. 2. County Surveyors Record.