

V-2
MICROFILMED

PLAT AND RECORD

Of a Survey on Section 7 T 3 R 11 E. of the 4 P. M. in Center Township

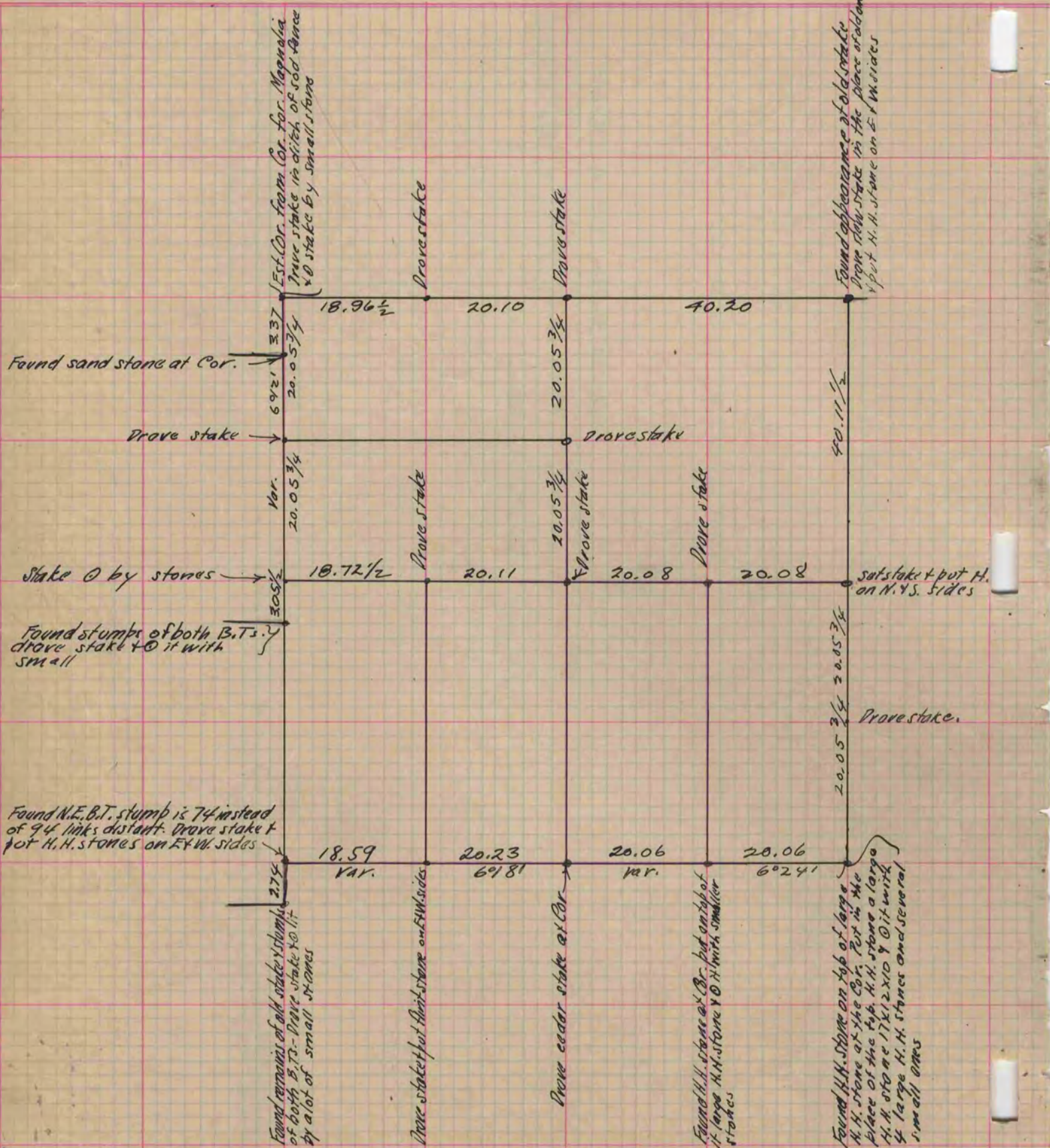
Rock County, Wisconsin, made September the 27 1876

I hereby certify that the following is a correct record of said survey as made by me.

COUNTY BUILDING
CITY OF JANESVILLE

(Signed) Edward Ruger
R.H.B.

County Surveyor.



Copied from page 172 Vol. 2. Original County Surveyors Record