

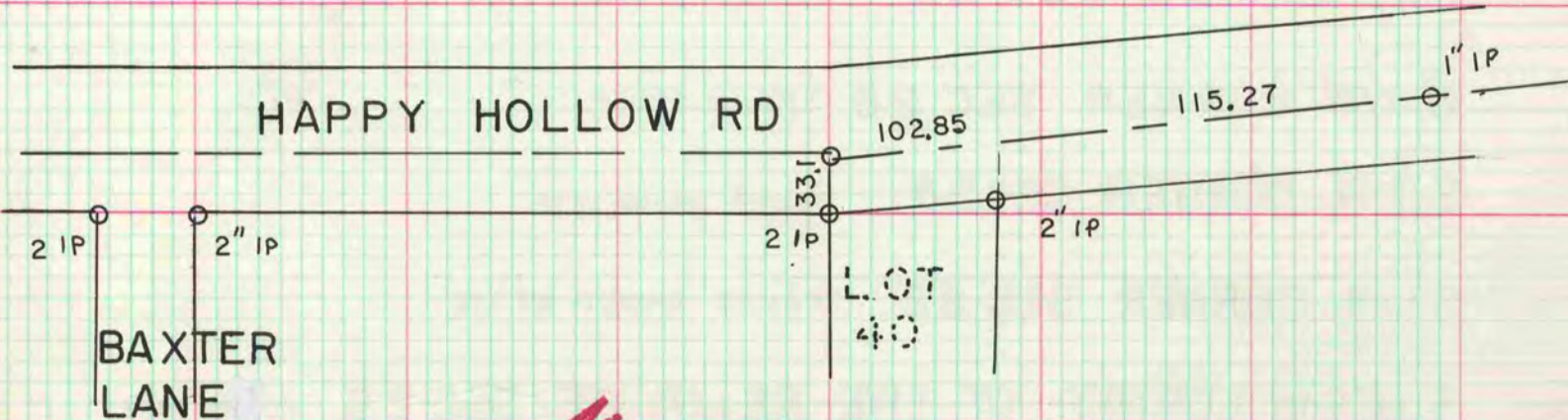
PLAT AND RECORD

Of a Survey on Section 2025 T 2 R 12 E. of the 4 P. M. in ROCK Township
Rock County, Wisconsin, made AUG the 29 1967

I hereby certify that the following is a correct record of said survey as made by me

COUNTY BUILDING
CITY OF JANESVILLE
County Surveyor.

RW POST
SET MON BOX

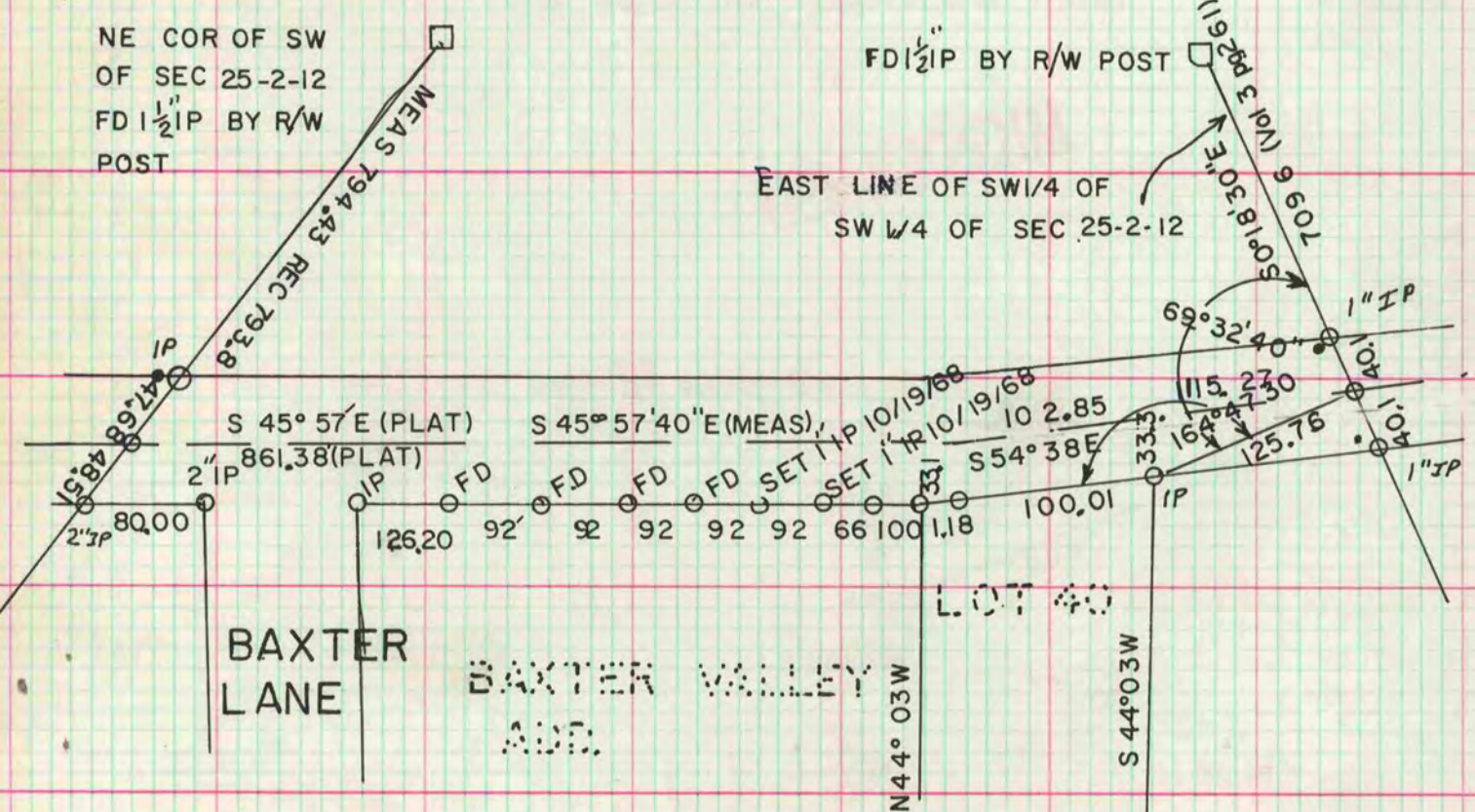


MICROFILMED

NE COR OF SW
OF SEC 25-2-12
FD 1 1/2" IP BY R/W
POST

FD 1 1/2" IP BY R/W POST

EAST LINE OF SW 1/4 OF
SW 1/4 OF SEC 25-2-12



INFORMATION COPIED FROM
PRINT SUPPLIED BY H. LEE