

CITY OF JANESVILLE  
COUNTY BUILDING

# PLAT AND RECORD

529  
V-4

COUNTY BUILDING  
CITY OF JANESVILLE

Of a Survey on Section 1 & 12 T 1 N R 13 E. of the 4 P. M. in TURTLE Township

Rock County, Wisconsin, made SEPTEMBER the 21st & 22nd 1971

I hereby certify that the following is a correct record of said survey as made by me.

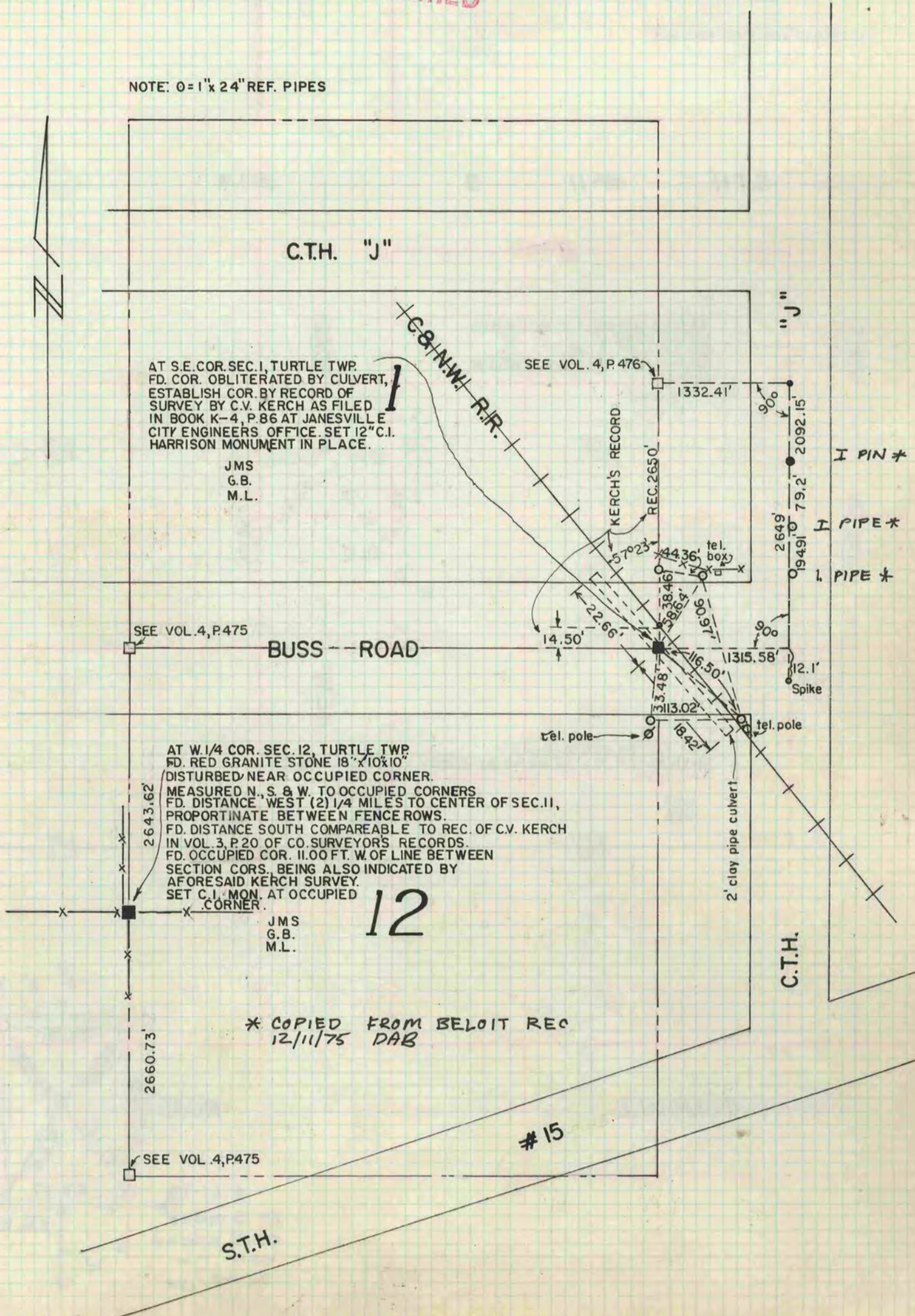
*Hugh J. Lee*

County Surveyor.

**MICROFILMED**

THE GEO. D. BARNARD COMPANY, ST. LOUIS

NOTE:  $\emptyset = 1" \times 24"$  REF. PIPES



AT S.E. COR. SEC. 1, TURTLE TWP.  
FD. COR. OBLITERATED BY CULVERT,  
ESTABLISH COR. BY RECORD OF  
SURVEY BY C.V. KERCH AS FILED  
IN BOOK K-4, P. 86 AT JANESVILLE  
CITY ENGINEERS OFFICE. SET 12" C.I.  
HARRISON MONUMENT IN PLACE.

JMS  
G.B.  
M.L.

SEE VOL. 4, P. 475

BUSS ROAD

AT W. 1/4 COR. SEC. 12, TURTLE TWP.  
FD. RED GRANITE STONE 18" X 10" X 10"  
DISTURBED NEAR OCCUPIED CORNER.  
MEASURED N., S. & W. TO OCCUPIED CORNERS  
FD. DISTANCE WEST (2) 1/4 MILES TO CENTER OF SEC. 11,  
PROPORTINATE BETWEEN FENCE ROWS.  
FD. DISTANCE SOUTH COMPAREABLE TO REC. OF C.V. KERCH  
IN VOL. 3, P. 20 OF CO. SURVEYORS RECORDS.  
FD. OCCUPIED COR. 11.00 FT. W. OF LINE BETWEEN  
SECTION CORN. BEING ALSO INDICATED BY  
AFORESAID KERCH SURVEY.  
SET C.I. MON. AT OCCUPIED  
CORNER.

JMS  
G.B.  
M.L.

12

\* COPIED FROM BELOIT REC  
12/11/75 DAB

SEE VOL. 4, P. 475

# 15

S.T.H.