

PLAT AND RECORD

Of a Survey on Section 29 T 2 R 14 E. of the 4 P. M. in Bradford Township
Rock County, Wisconsin, made OCT 31 the 31 19 78

I hereby certify that the following is a correct record of said survey as made by me.

COUNTY BUILDING
CITY OF JANESVILLE

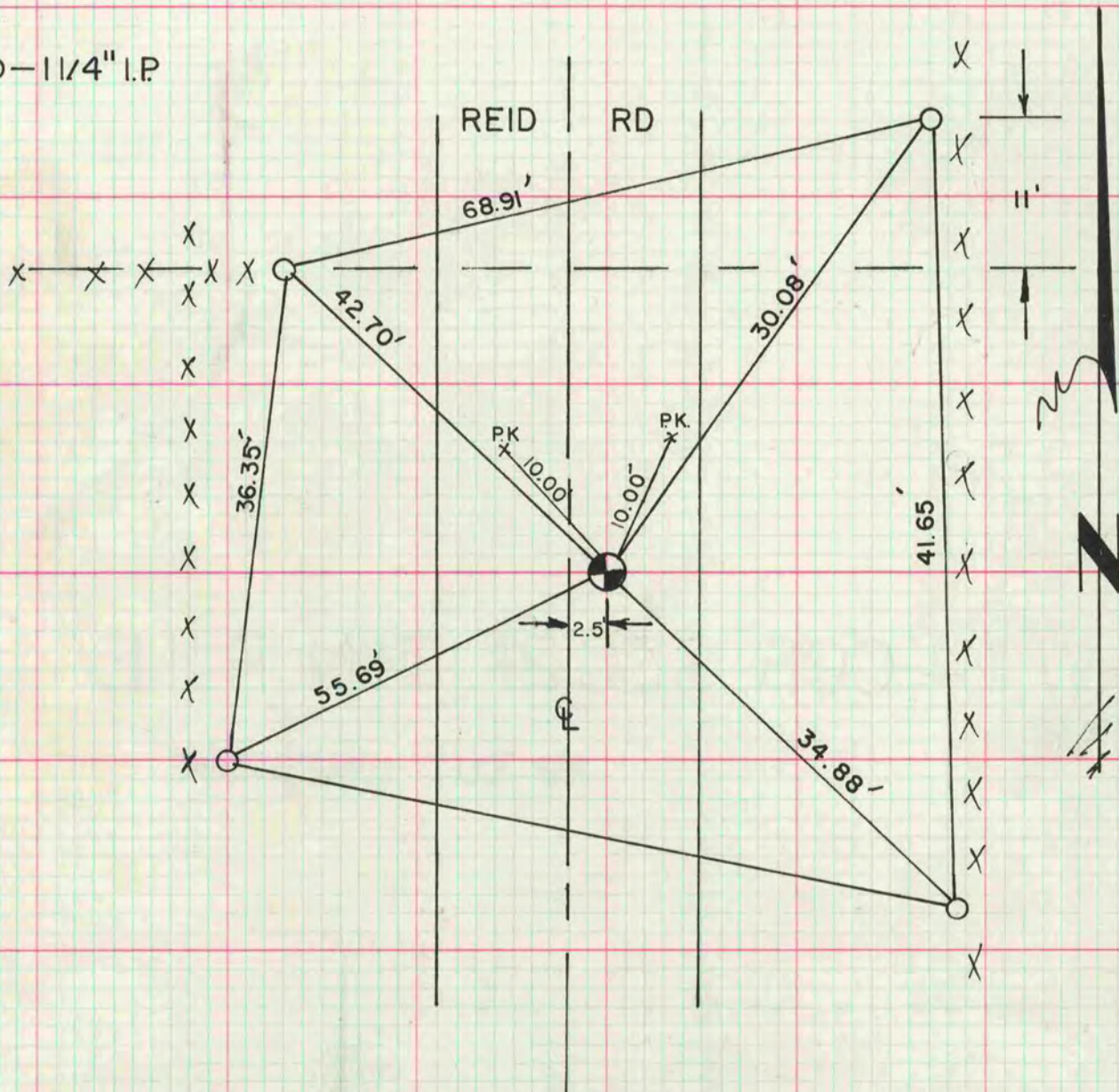


County Surveyor.

W 1/4 COR SEC 29 T 2 N R 14 E

FD 24"X12"X4" LIMESTONE
⊙ 4 LIMESTONES 2' DEEP

○ - 1 1/4" I.P.



THE SECTION CORNER IS ON LINE WITH THE FENCE TO THE WEST AND NOT AS DRAWN.

MICROFILMED