

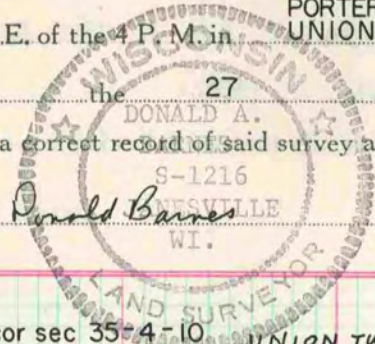
# PLAT AND RECORD

Of a Survey on Section  $\frac{23}{35}$  T 4 N R 10 E. of the 4 P. M. in PORTER UNION Township

Rock County, Wisconsin, made FEB the 27 1977

I hereby certify that the following is a correct record of said survey as made by me.

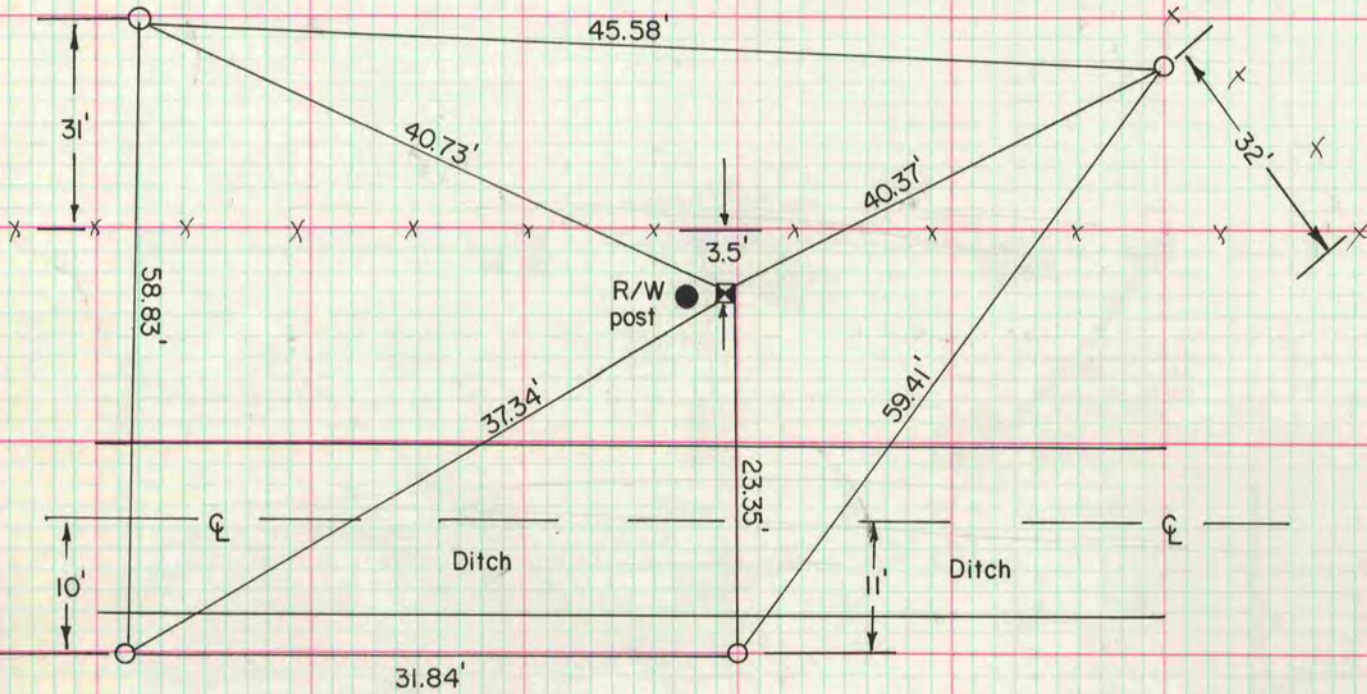
COUNTY BUILDING  
CITY OF JANESVILLE



County Surveyor.

W 1/4 cor sec 35-4-10 UNION TWP

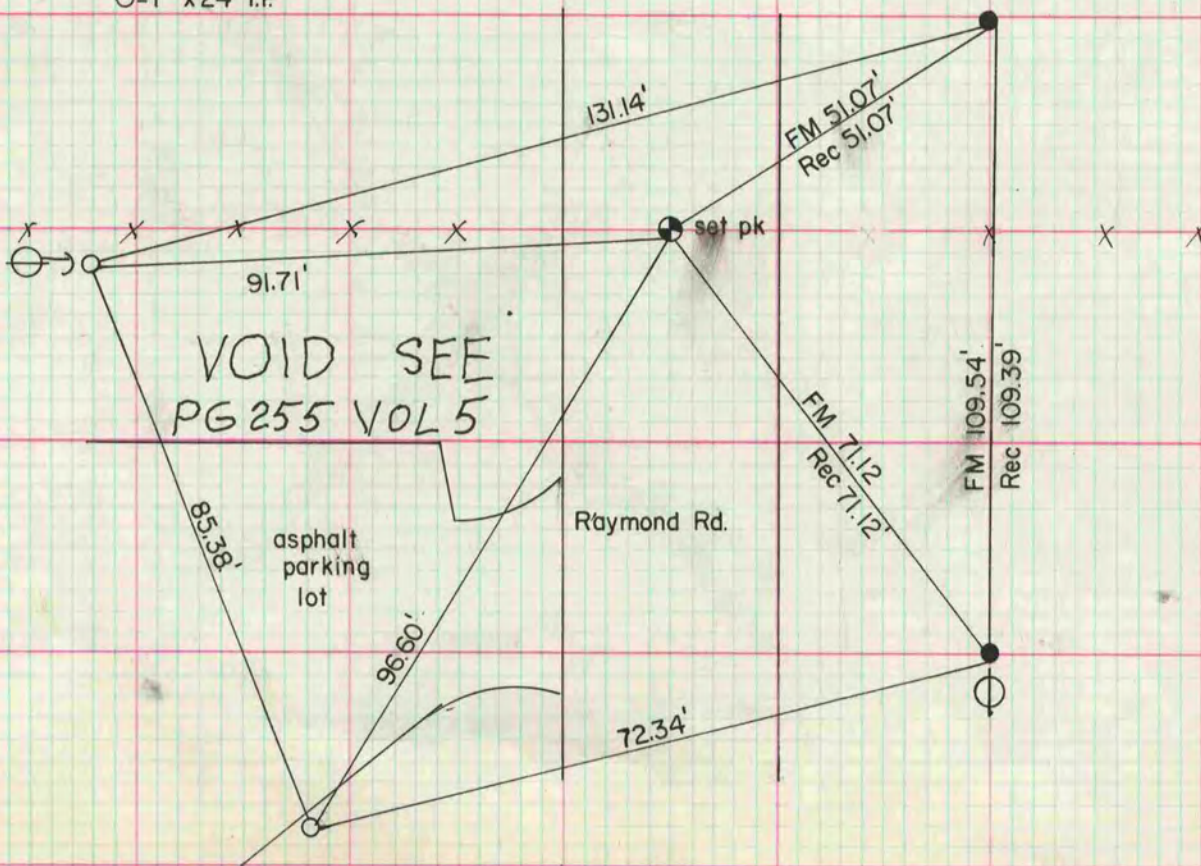
fd cut stone mon. placed 1" x 24" I.P.  
horizontally next to stone mon.



○ = G-1 mon with cap

SW cor NE 1/4 NE 1/4 sec 23-4-11  
PORTER TWP

● = fd 1" I.P.  
○ = 1" x 24" I.P.



VOID SEE  
PG 255 VOL 5

MICROFILMED