

MICROFILMED

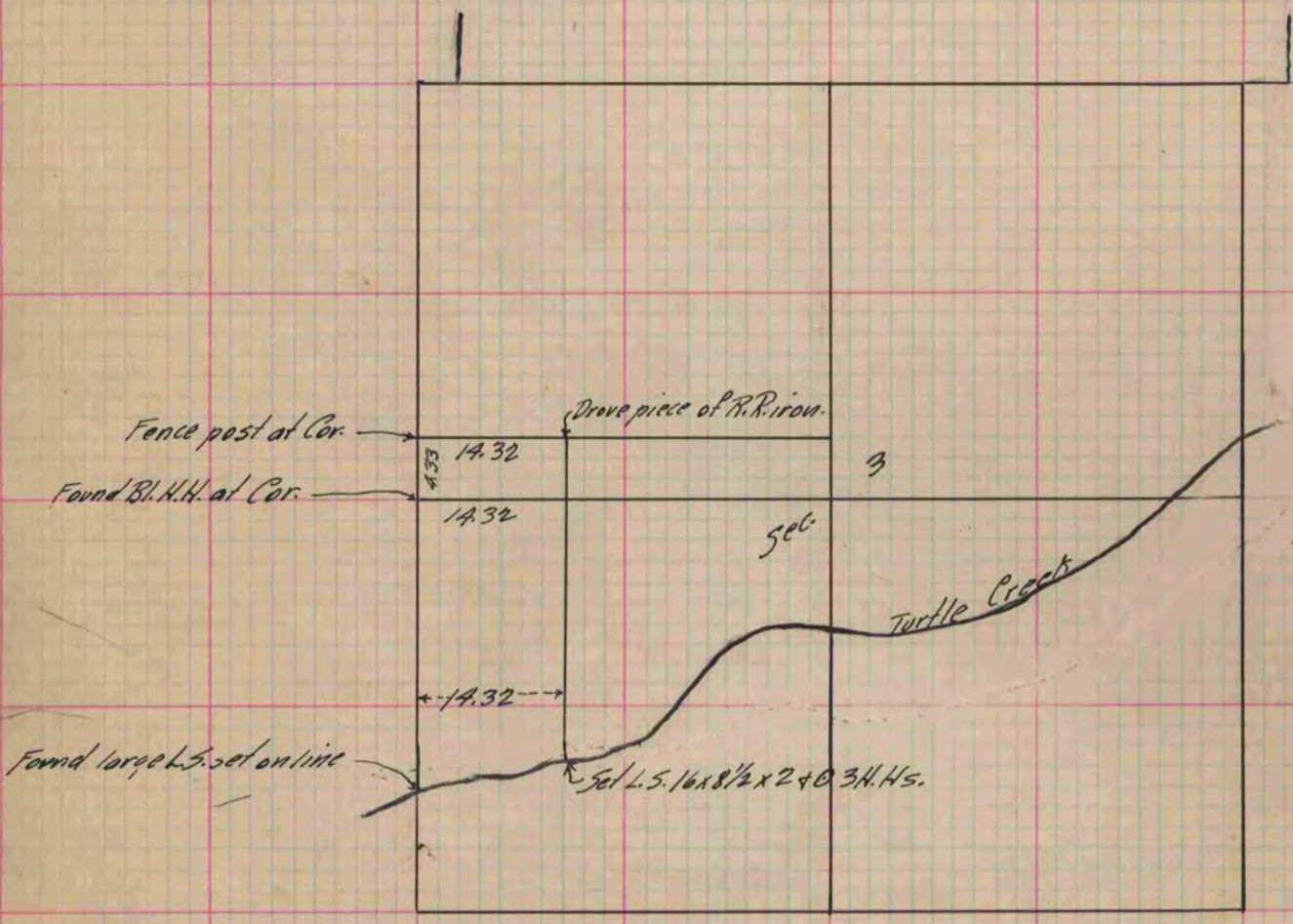
PLAT AND RECORD

Of a Survey on Section 3 T 1 R 13 E. of the 4 P. M. in Turtle Township

Rock County, Wisconsin, made November the 23 1891

COUNTY BUILDING CITY OF JANESVILLE I hereby certify that the following is a correct record of said survey as made by me.

(Signed) O. G. Bleedorn Dep. County Surveyor.
R. H. B.



Copied from P. 362 Vol. 2 County Surveyor's Record.