

PLAT AND RECORD

MICROFILMED

Of a Survey on Section 2 T 2 R 13 E. of the 4 P. M. in La Prairie Township

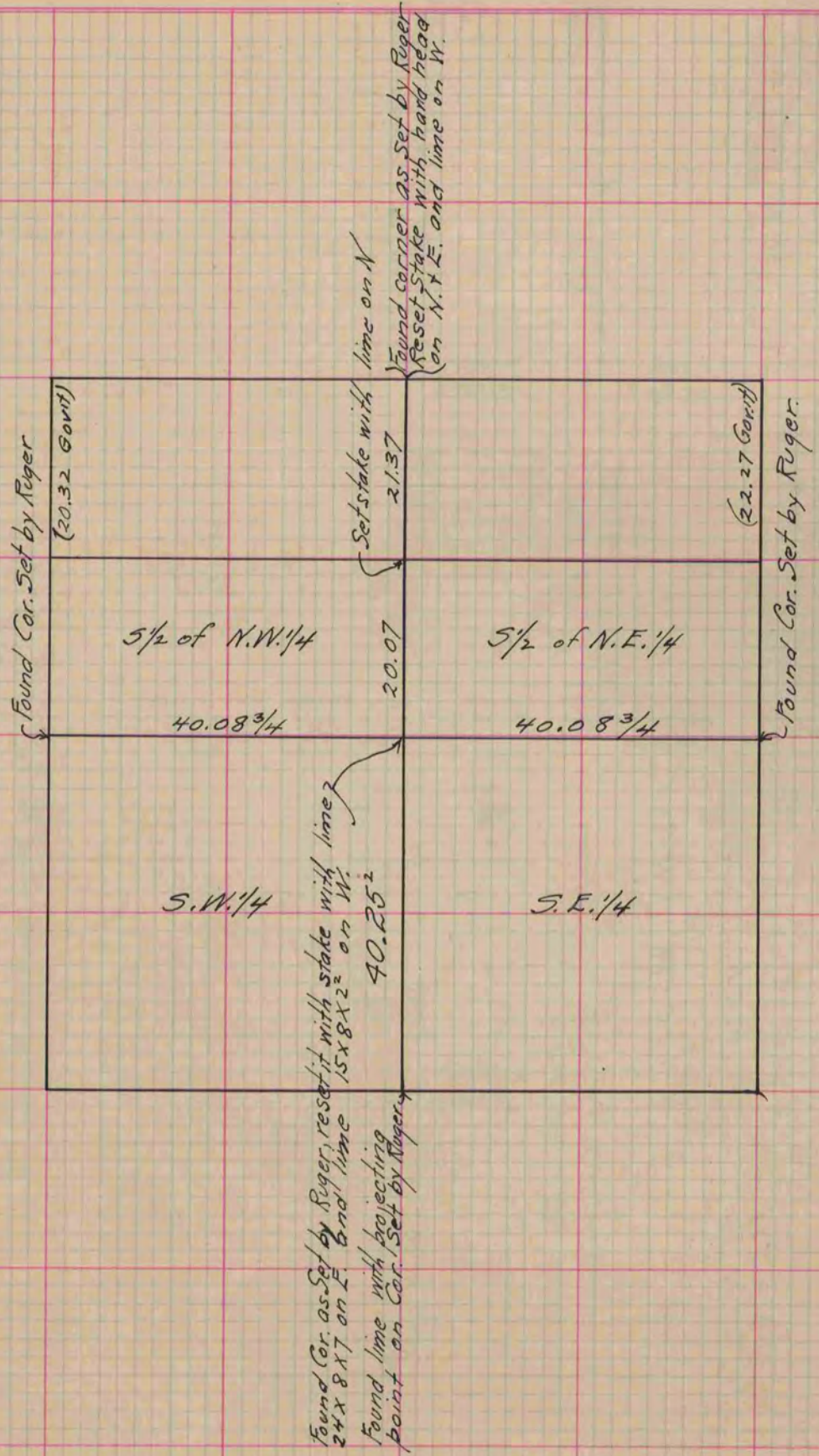
Rock County, Wisconsin, made May the 14 1866

I hereby certify that the following is a correct record of said survey as made by me.

COUNTY CLERK
CITY OF JANESVILLE

(Signed) J. D. Locke
R.H.B.

County Surveyor.



Copied from upper 1/2 of Page 230 Vol. 1. Original County Surveyors Record