

MICROFILMED

PLAT AND RECORD

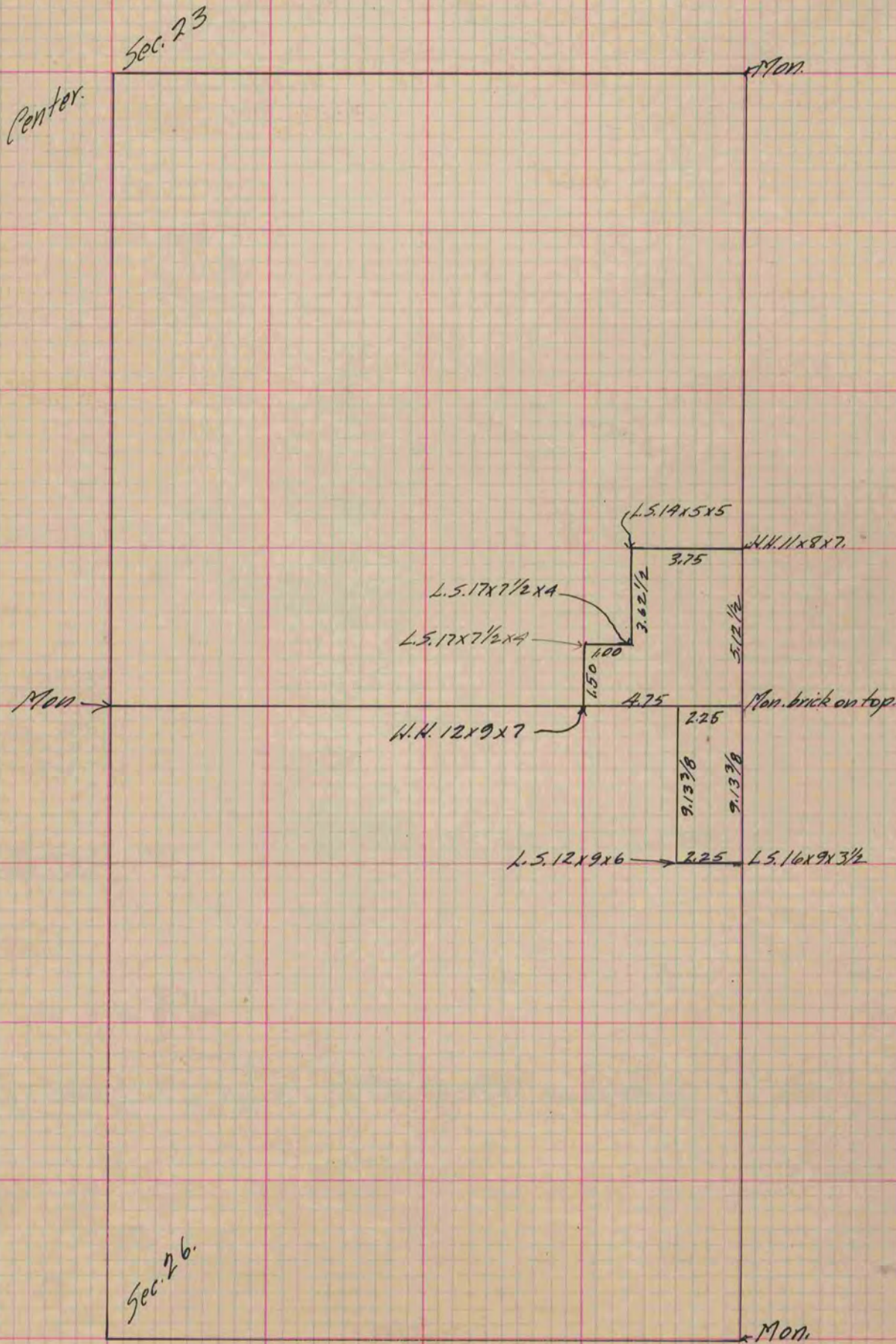
Of a Survey on Section 23 & 26 T 3 R 13 E. of the 4 P. M. in Harmony Township

Rock County, Wisconsin, made July the 8 1891

I hereby certify that the following is a correct record of said survey as made by me.

COUNTY BUILDING
CITY OF JANESVILLE

(Signed) O. G. Bleedorn Dep.
R. H. B. County Surveyor.



Copied from P. 359 Vol. 2 County Surveyor's Record