

MICROFILMED

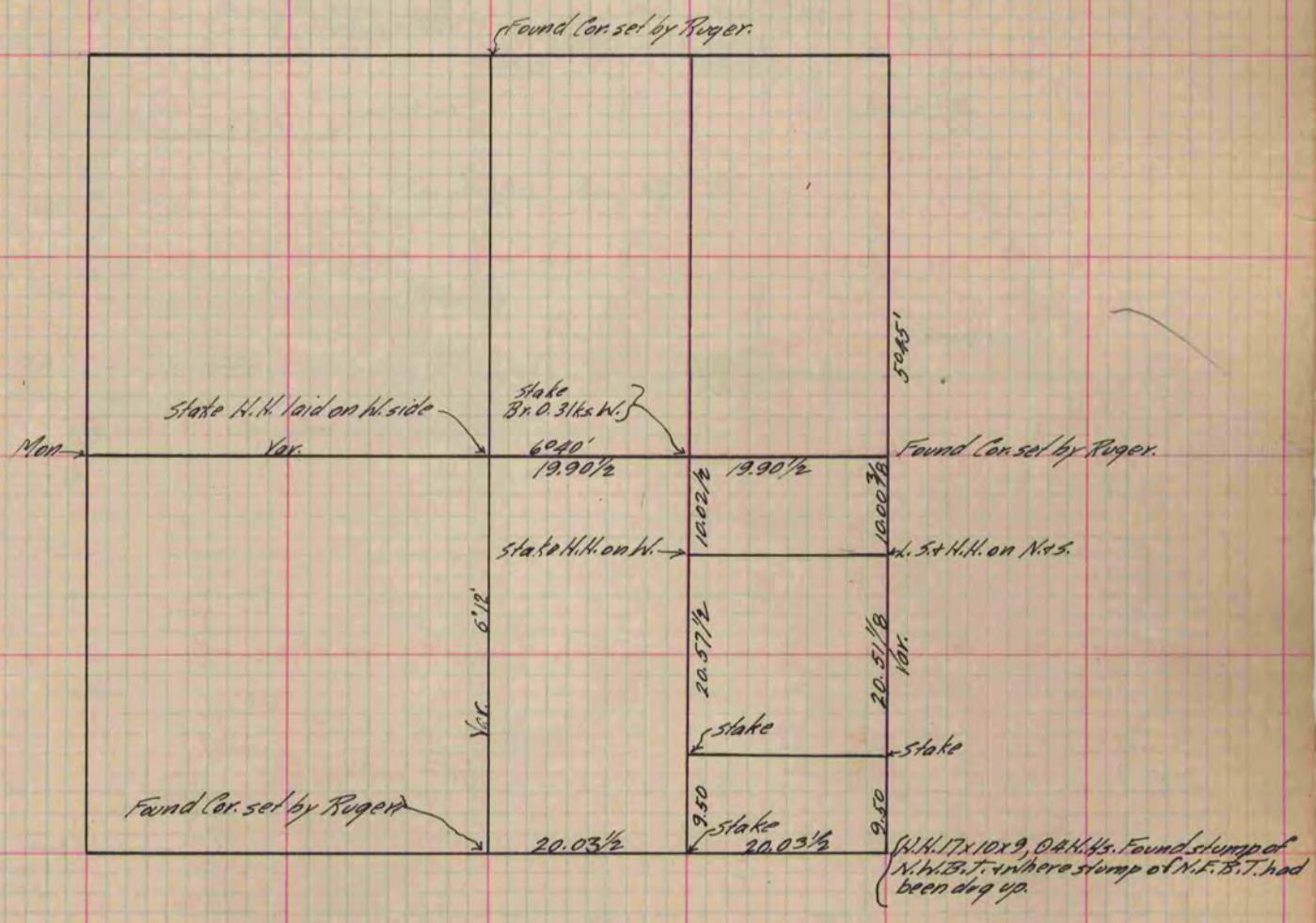
# PLAT AND RECORD

COUNTY BUILDING  
CITY OF JANESVILLE

Of a Survey on Section 18 T 3 R 14 E. of the 4 P. M. in Johnstown Township  
Rock County, Wisconsin, made May the 17 & 20 1890

I hereby certify that the following is a correct record of said survey as made by me.

(Signed) O.G. Bleedorn Dep  
P.H.B. County Surveyor.



Copied from P. 349 Vol 2 County Surveyor's Record.