

MICROFILMED

PLAT AND RECORD

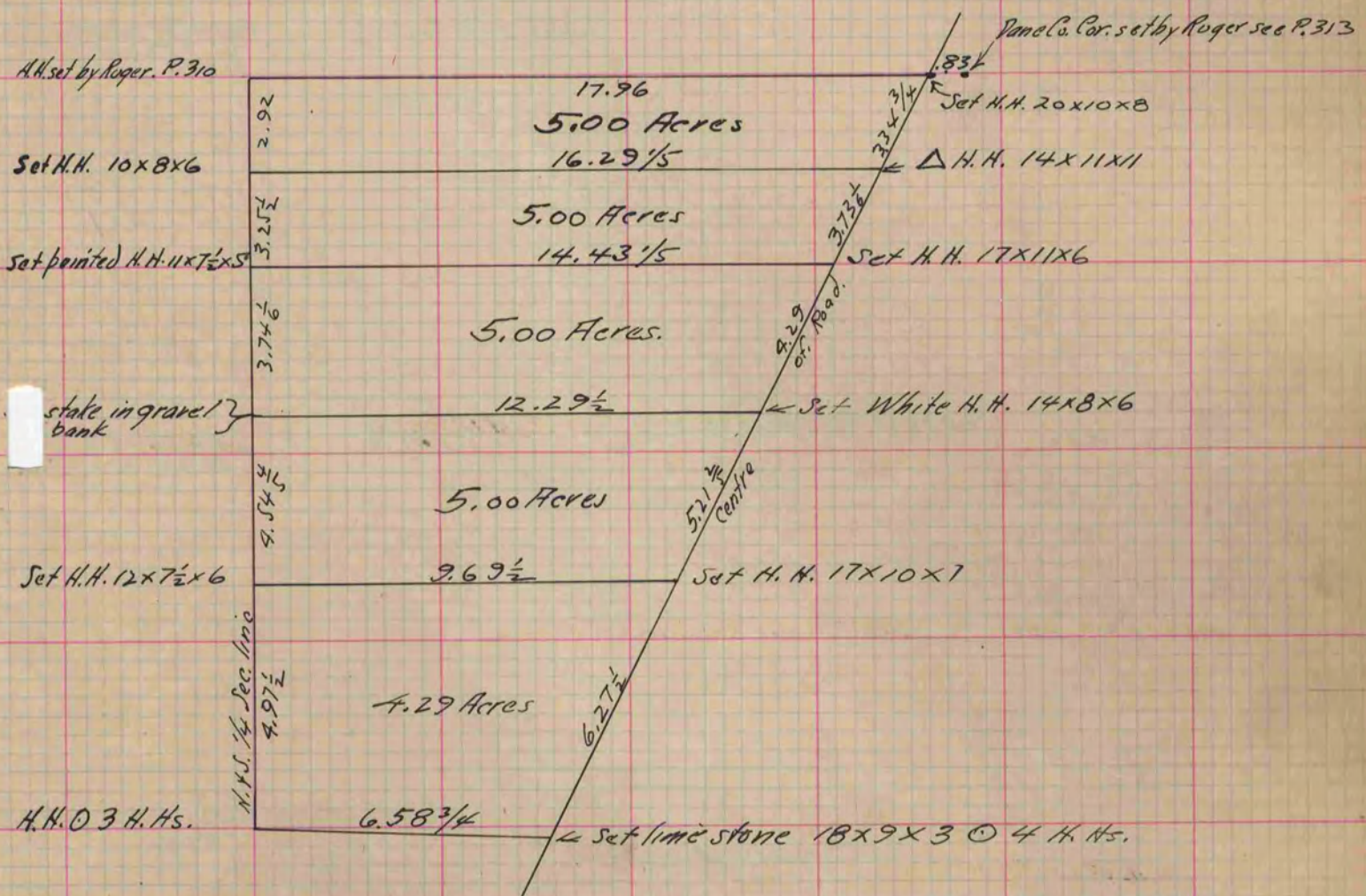
COUNTY BUILDING
CITY OF JANESVILLE

Of a Survey on ^{N.W. 1/4 of N.E. 1/4} Section 3 T 4 R 12 E. of the 4 P. M. in Fulton Township

Rock County, Wisconsin, made Aug. the 27 & 23 1892

I hereby certify that the following is a correct record of said survey as made by me.

(Signed) O.G. Bledorn
R.H.B. County Surveyor.



Copied from P. 368 Vol. 2. County Surveyors Record.