

PLAT AND RECORD

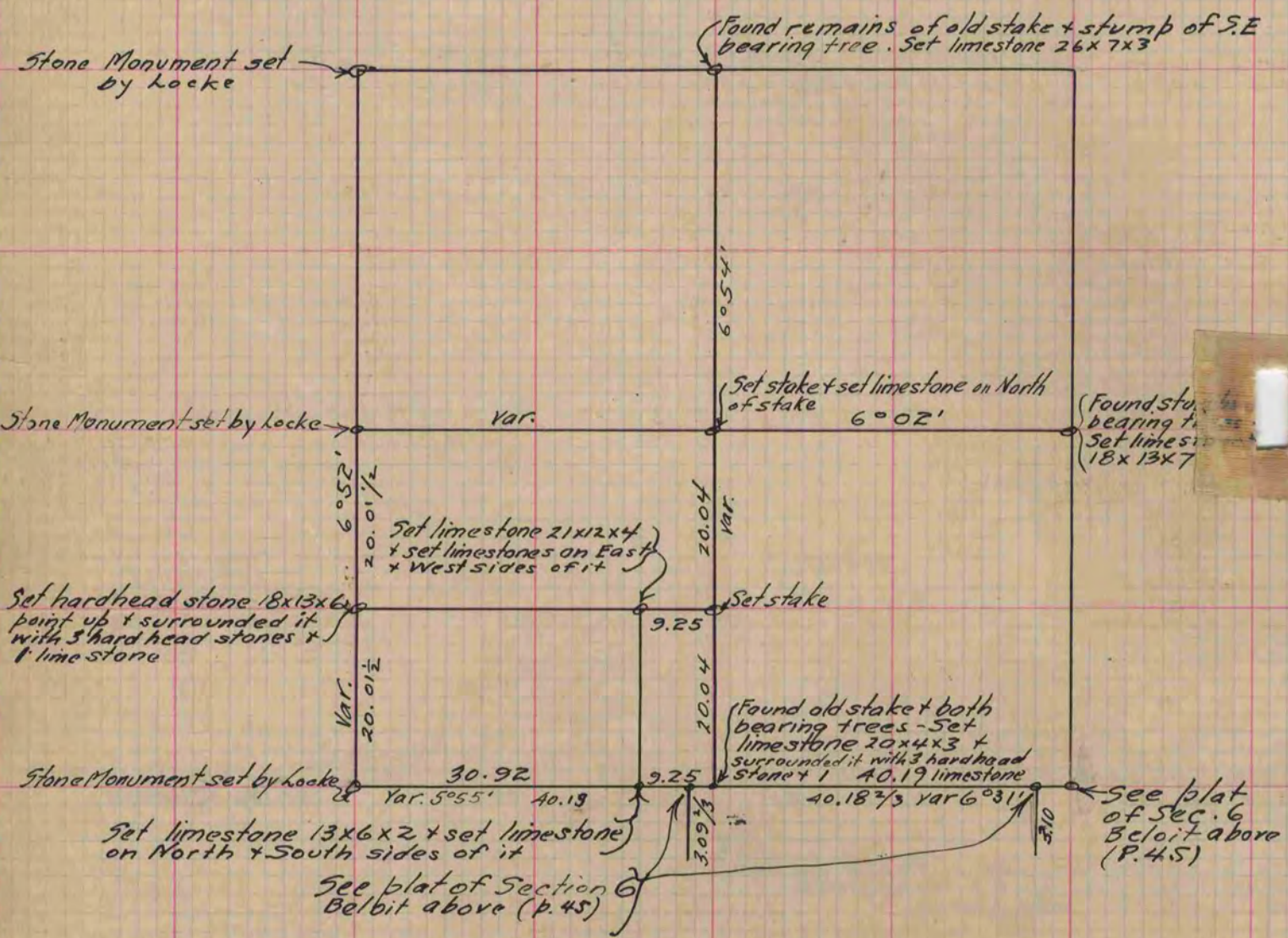
Of a Survey on Section 31 T 2 R 12 E. of the 4 P. M. in Rock Township

Rock County, Wisconsin, made November the 26th & 28th 1870

I hereby certify that the following is a correct record of said survey as made by me.

COUNTY BUILDING
CITY OF JANESVILLE

(Signed) Edward Ruger (Deputy
R.H.B. County Surveyor



Copied from page 30 Vol. 2 Original County Surveyors Record