

466 MICROFILMED PLAT AND RECORD  
V-2

ROCK COUNTY SURVEYOR  
CITY OF JANESVILLE

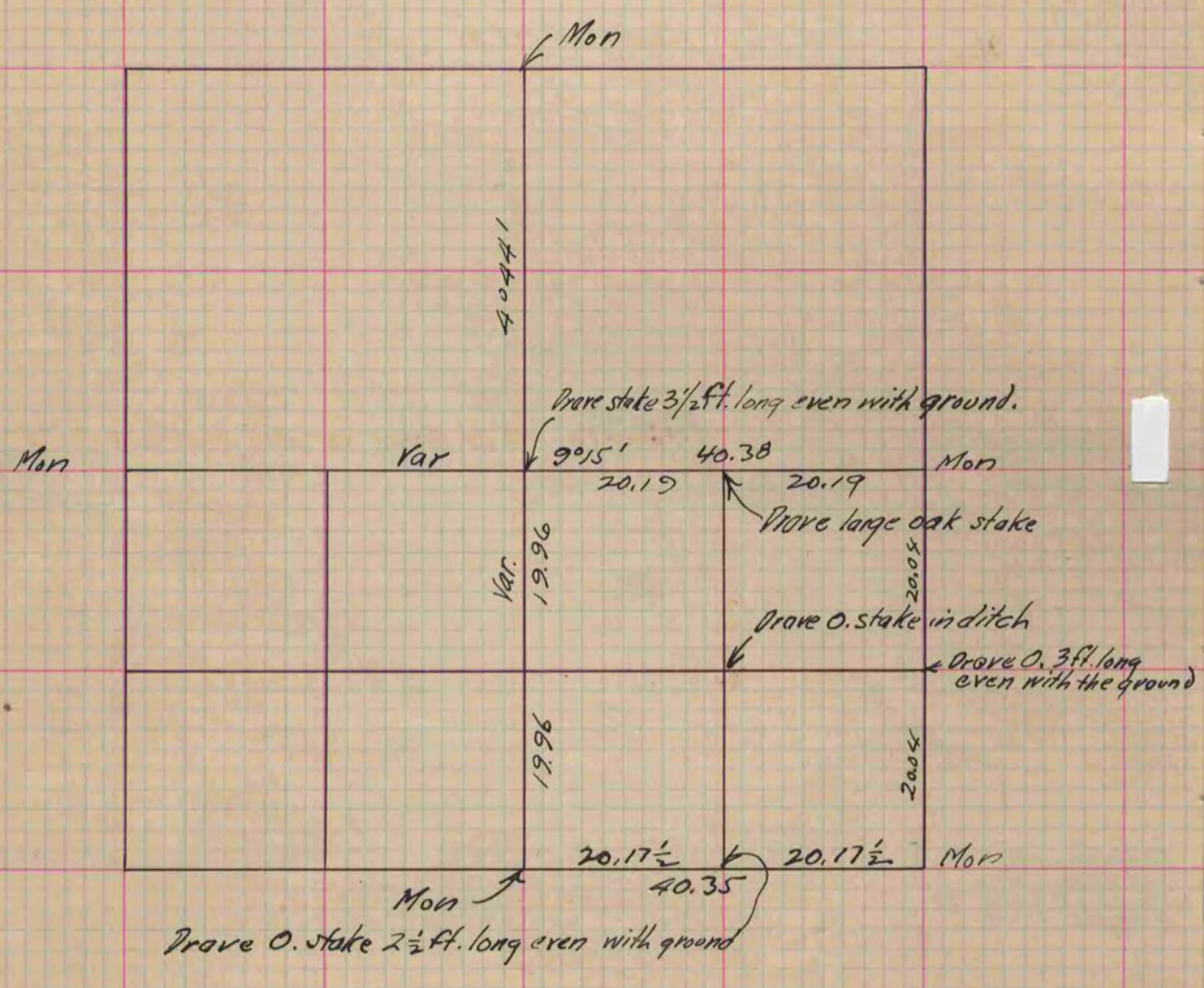
COUNTY BUILDING  
CITY OF JANESVILLE

Of a Survey on Section 24 T 2 R 11 E. of the 4 P. M. in Plymouth Township

Rock County, Wisconsin, made May the 10 1892

I hereby certify that the following is a correct record of said survey as made by me.

(Signed) O. G. Bledorn  
R. H. B. County Surveyor.



Copied from P. 367 Vol. 2. County Surveyors Record.