

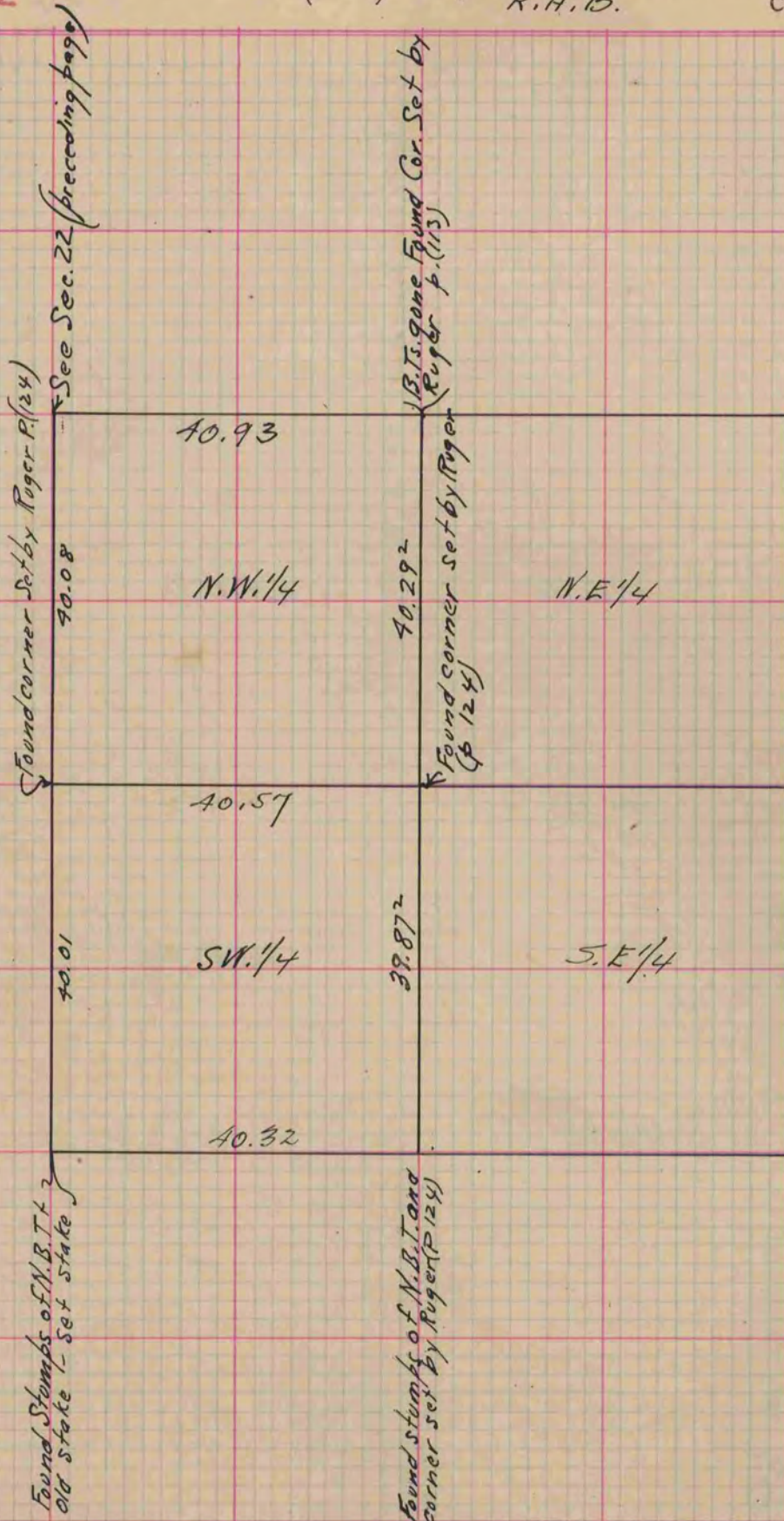
V-1 MICROFILMED PLAT AND RECORD

Of a Survey on Section 27 T 4 R 14 E. of the 4 P. M. in Lima Township  
Rock County, Wisconsin, made July the 22<sup>nd</sup> 1866

I hereby certify that the following is a correct record of said survey as made by me.

COUNTY BUILDING  
CITY OF JANESVILLE

(Signed) S. D. Locke  
R. H. O. County Surveyor.



Copied from upper 1/2 of Page 236 Vol. 1. Original County Surveyors Record