

PLAT AND RECORD

Of a Survey on Section 24 & 25 T 3 N R 12 E. of the 4 P. M. in JANESVILLE Township

Rock County, Wisconsin, made JULY the 23rd 1991

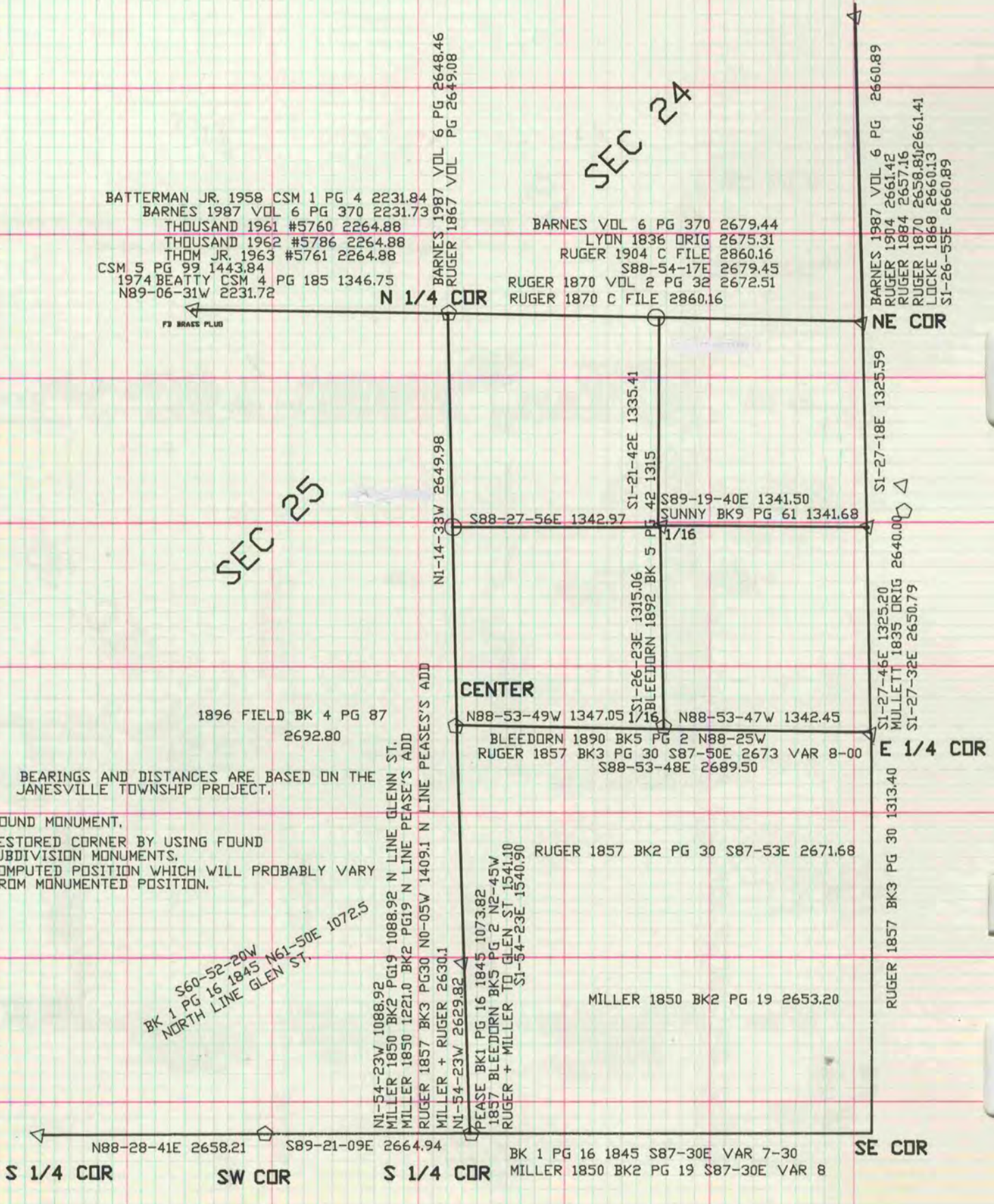
I hereby certify that the following is a correct record of said survey as made by me.

COUNTY BUILDING CITY OF JANESVILLE

Donald Barnes

County Surveyor.

THE S.D.P. BARNARD COMPANY, ST. LOUIS



BEARINGS AND DISTANCES ARE BASED ON THE JANESVILLE TOWNSHIP PROJECT.

- △ FOUND MONUMENT.
- ◻ RESTORED CORNER BY USING FOUND SUBDIVISION MONUMENTS.
- COMPUTED POSITION WHICH WILL PROBABLY VARY FROM MONUMENTED POSITION.

S60-52-20W  
BK 1 PG 16 1845 N61-50E 1072.5  
NORTH LINE GLENN ST.

NI-54-23W 1088.92  
MILLER 1850 BK2 PG19 1088.92 N LINE GLENN ST.  
MILLER 1850 1221.0 BK2 PG19 N LINE PEASE'S ADD  
RUGER 1857 BK3 PG30 NO-05W 1409.1 N LINE PEASE'S ADD  
MILLER + RUGER 2630.1  
NI-54-23W 2629.82  
PEASE BK1 PG 16 1845 1073.82  
1857 BLEEDORN BK5 PG 2 N2-45W  
RUGER + MILLER TO GLENN ST 1541.10  
SI-54-23E 1540.90

MILLER 1850 BK2 PG 19 2653.20

BK 1 PG 16 1845 S87-30E VAR 7-30  
MILLER 1850 BK2 PG 19 S87-30E VAR 8