

PLAT AND RECORD

Of a Survey on Section 5,6 T 4 R 14 E. of the 4 P. M. in LIMA Township

Rock County, Wisconsin, made APRIL 18 1890

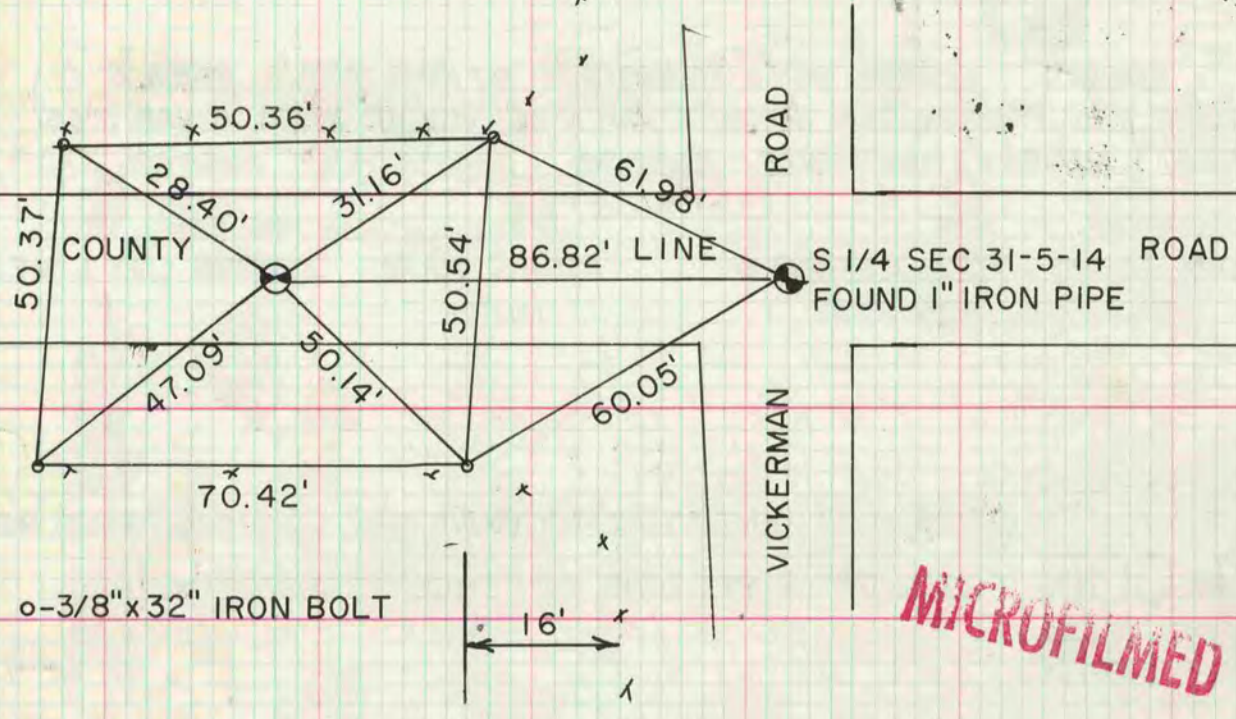
I hereby certify that the following is a correct record of said survey made by

COUNTY BUILDING
CITY OF JANESVILLE

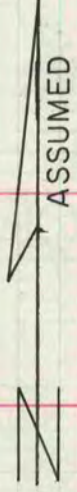


N 1/4 COR SEC 6

SET ALUM. MON. ON LINE WITH NE COR & S 1/4 COR SEC 31-5-14 N, R14E, AT SINGLE PROPORTIONATE DISTANCE

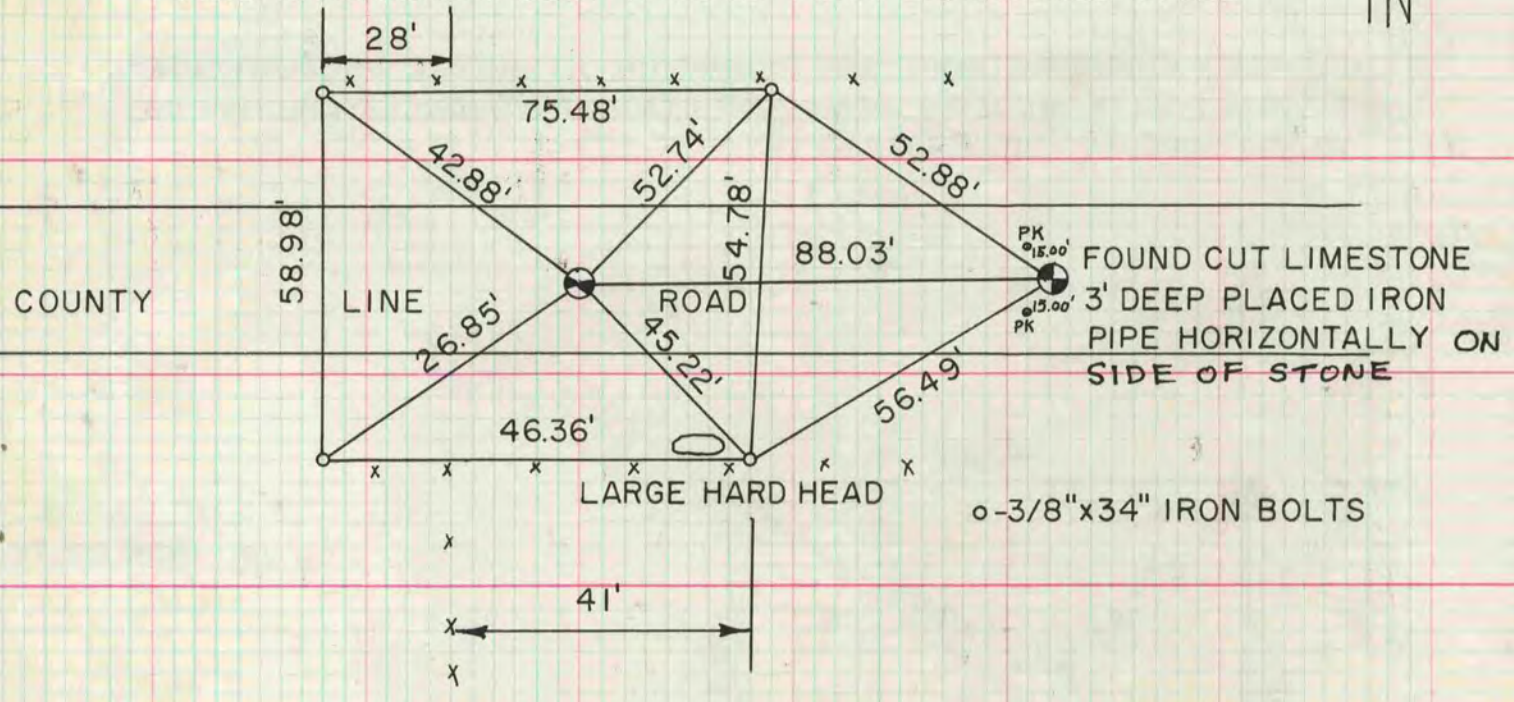


MICROFILMED



NE COR SEC 6

FOUND HARD HEAD 3' DEEP 17"x9"x8" POINT UP, REMOVED STONE



E 1/4 COR SEC 6

DUG AND FOUND NOTHING, OCCUPATION IS IN HARMONY WITH ORIG. GOV. SURVEY. SET ALUM. MON. AT OCCUPATION LINE

