

PLAT AND RECORD

Of a Survey on Section 3, 6, 21 T 2 R 14 E. of the 4 P. M. in BRADFORD Township
Rock County, Wisconsin, made AUG the 28

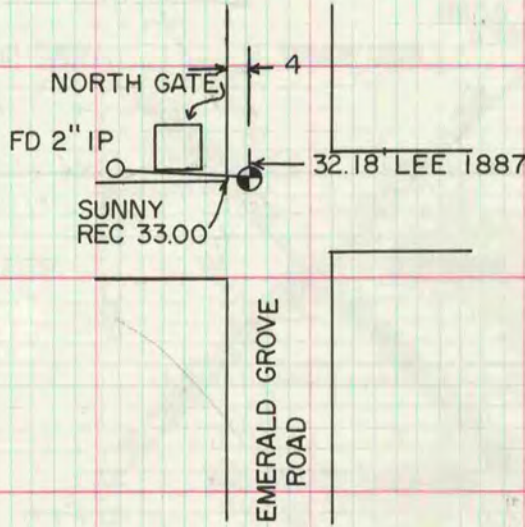
I hereby certify that the following is a correct record of said survey as made by me

COUNTY BUILDING
CITY OF JANESVILLE



SI/4 COR SEC 6

FD PK NAIL & UNDER THAT 1" IP REPLACED WITH 1 1/2" ALUM MON ON TOP OF LARGE HH @ HH'S



NE COR SEC 6

FD 1" IP 0.5' DEEP & LIMESTONE SET 12" ALUM MON ON TOP OF LIMESTONE

NW COR SEC 3

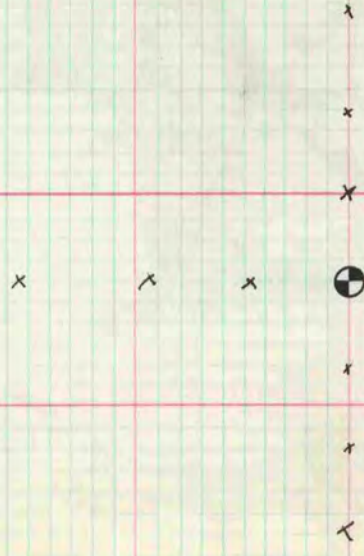
FD 1 1/2" X 12" CAPPED IP FD LS UNDERNEATH IP REPLACED WITH ALUM MON

WI/4 COR SEC 3

0.4' DEEP 1 1/2" X 16" IP LS UNDER IP SET ALUM MON

E1/4 COR SEC 21

FD HH 13" X 4" X 21" REPLACED WITH CI MON SET CARSONITE POST



MICROFILMED