

# PLAT AND RECORD

Of a Survey on Section 2 T 3 N., R 13 E. of the 4 P. M. in HARMONY Township

Rock County, Wisconsin, made Feb the 19 82

I hereby certify that the following is a correct record of said survey as made by me.

**COUNTY BUILDING  
CITY OF JANESVILLE**



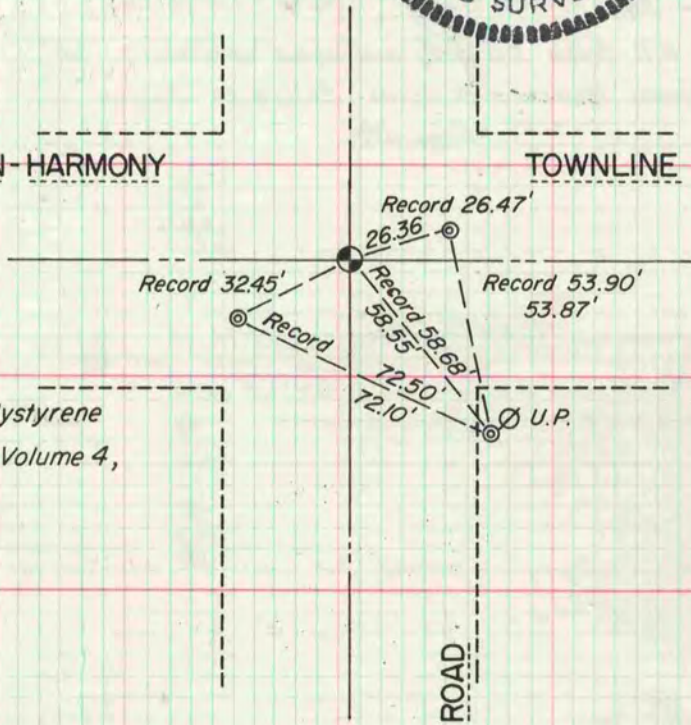
County Surveyor.

MILTON-HARMONY

TOWNLINE ROAD

### N.E. CORNER SECTION 2

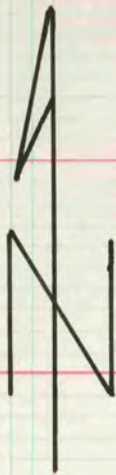
Found Cut Stone 32" deep, set Polystyrene Monument over stone. Reference: Volume 4, Page 156.



**MICROFILMED**

ROAD

MILTON-SHOPIERE



### E. 1/4 CORNER SECTION 2

Found Cut Stone 32" deep, set Polystyrene Monument over stone. Reference: Volume 4, Page 158.

