

PLAT AND RECORD

~~389~~
VOL. 25

Of a Survey on Section 13, 14, 24, 4 T. 13 R. 13 E. of the 4 P. M. in MILTON Township

Rock County, Wisconsin, made APRIL 21 1980

COUNTY BUILDING
CITY OF JANESVILLE

I hereby certify that the following is a correct record of said survey as made by me.

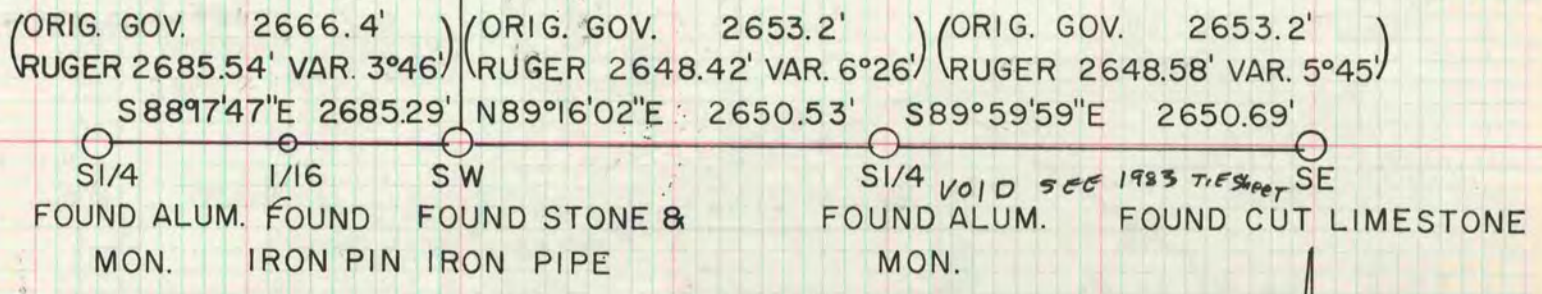


County Surveyor.

(ORIG. GOV. 2640'
RUGER 2633.4 VAR 6°27'
NO°09'43"W 2635.54'

1/4
FOUND CUT LIMESTONE

SEC 13



W 1/4 COR FOUND CUT LIMESTONE 0.5' ABOVE GROUND IN N/S FENCE ROW
 E 1/4 COR FOUND CUT LIMESTONE AT FENCE INTERSECTION
 OF SEC 24

ASSUMED

S 1/4 COR SEC 13

DUG AND FOUND NOTHING, SET ALUM. MON. AT SINGLE PROPORTIONATE DISTANCE WITH RUGER'S REMONUMENTATION DISTANCES AND ON LINE WITH FENCE TO THE EAST.

MICROFILMED

