

PLAT AND RECORD

261

U-5

COUNTY OF JANESEVILLE
CITY OF JANESEVILLE

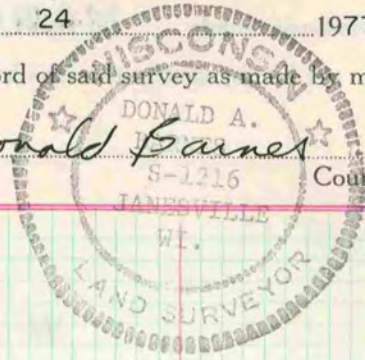
COUNTY BUILDING DEPT
CITY OF JANESEVILLE

Of a Survey on Section 33, 34 T 3 R 13 E. of the 4 P. M. in HARMONY Township

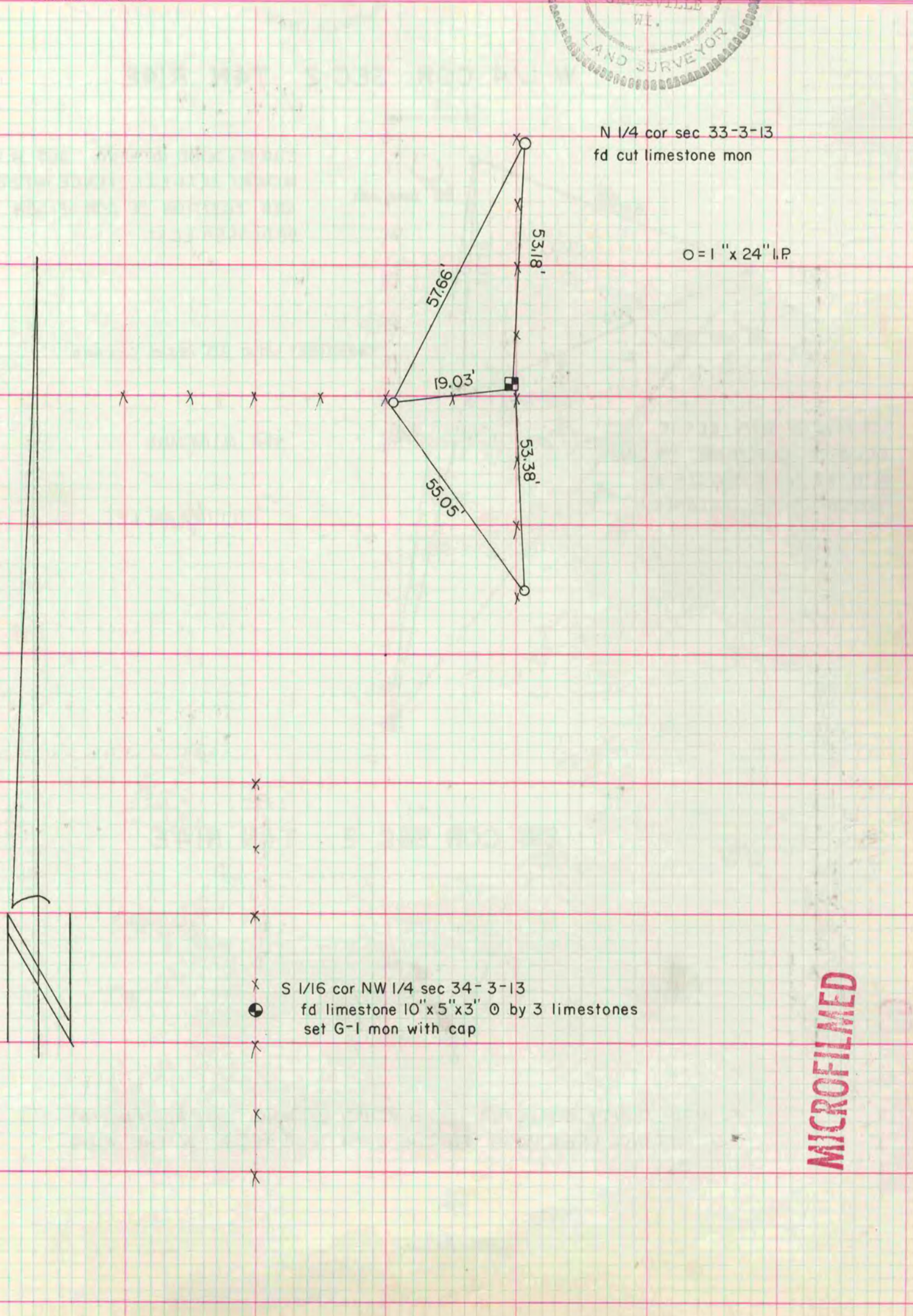
Rock County, Wisconsin, made MARCH the 24 1977

I hereby certify that the following is a correct record of said survey as made by me.

Donald Barnes



County Surveyor.



N 1/4 cor sec 33-3-13
fd cut limestone mon

O = 1" x 24" I.P.

S 1/16 cor NW 1/4 sec 34-3-13
● fd limestone 10" x 5" x 3" O by 3 limestones
set G-1 mon with cap

MICROFILMED