

# PLAT AND RECORD

COUNTY BUILDING  
CITY OF JANESVILLE

Of a Survey on Section 23 T 3 R 11 E. of the 4 P. M. in CENTER Township

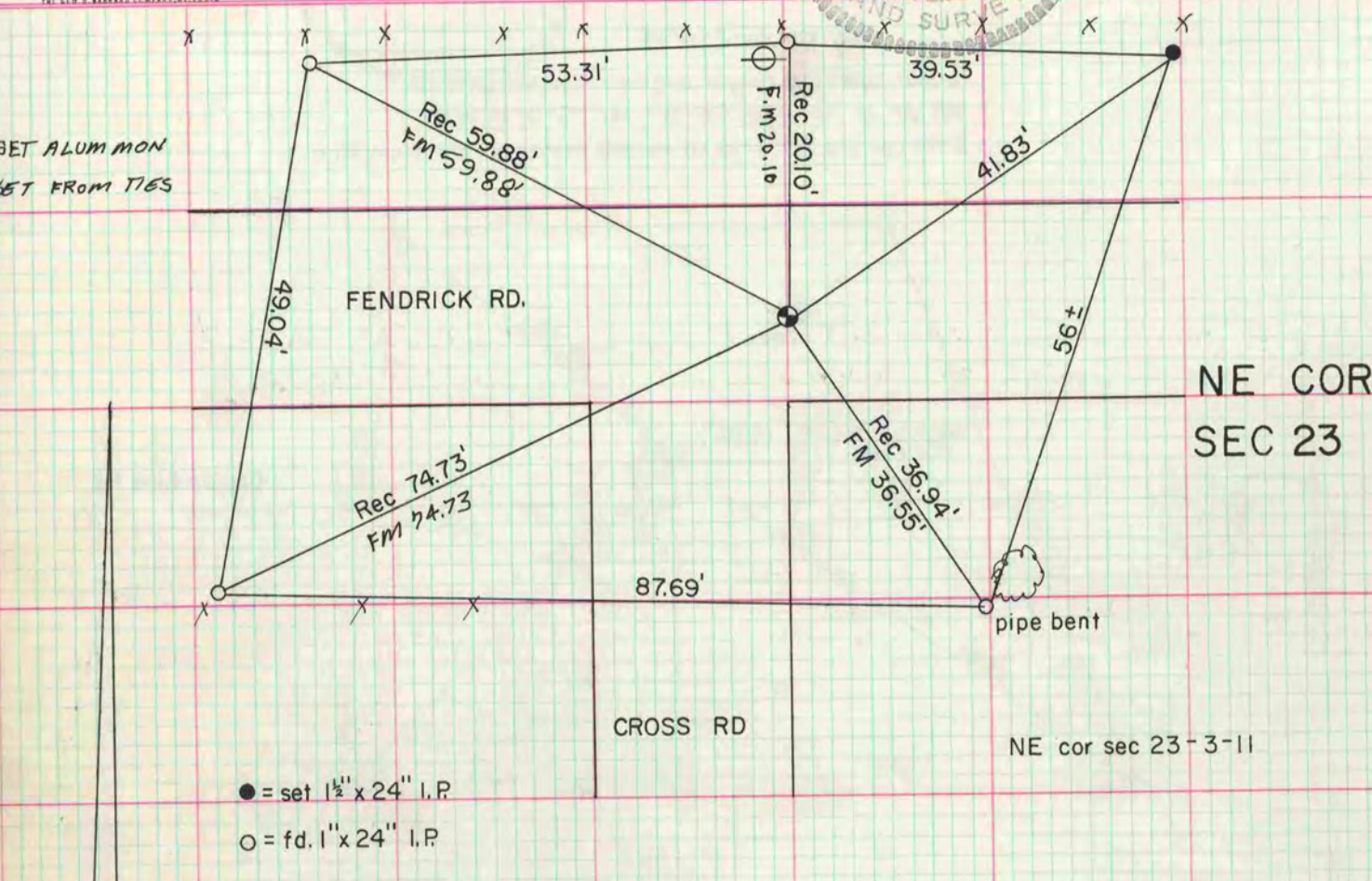
Rock County, Wisconsin, made APRIL 5 the 1977

I hereby certify that the following is a correct record of said survey as made by me.



Donald Barnes  
County Surveyor.

SET ALUMINUM  
SET FROM TIES



SE COR SEC 23 T3N R11E

Fd 16" deep 1" IRON PIN. Set 1/2" IP over pin

MICROFILMED

