

PLAT AND RECORD

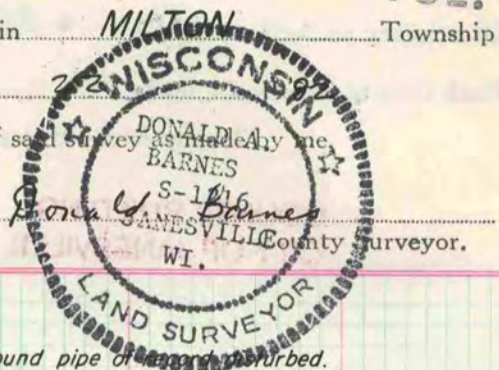
251

VOL. 6

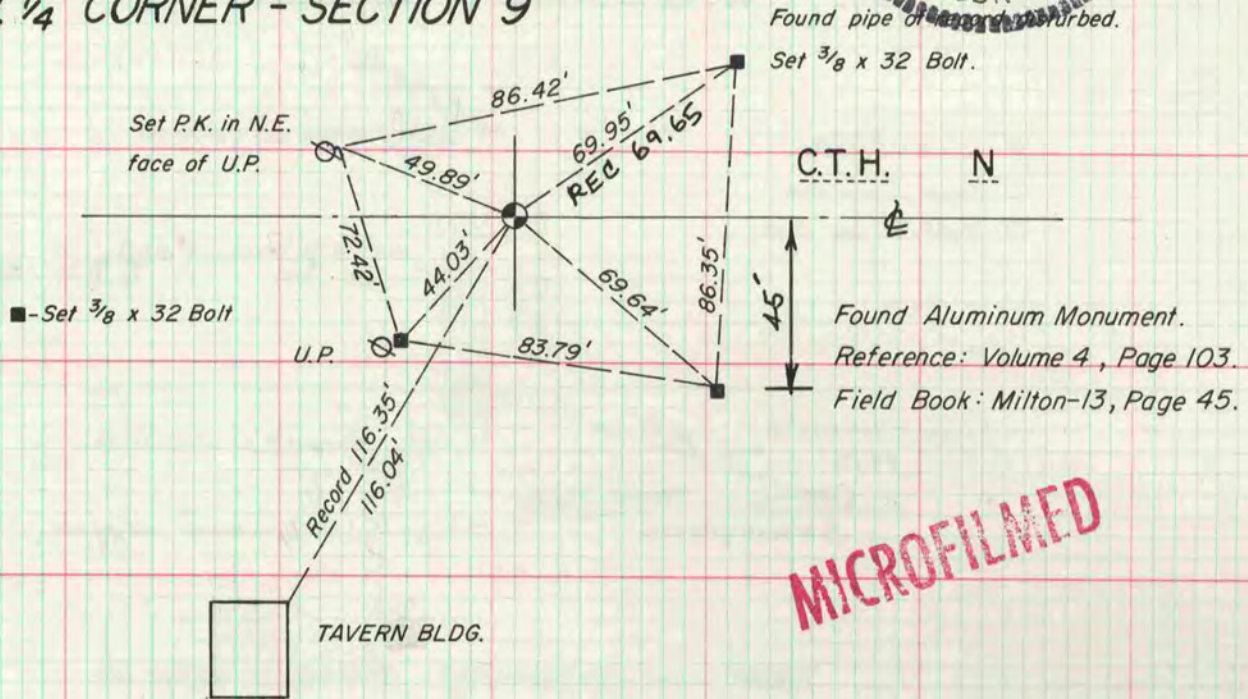
Of a Survey on Section 9 T 4N., R 13 E. of the 4 P. M. in MILTON Township
Rock County, Wisconsin, made April the

I hereby certify that the following is a correct record of said survey as made by me,

**COUNTY BUILDING
CITY OF JANESVILLE**



W. 1/4 CORNER - SECTION 9



CENTER OF SECTION 9

