

PLAT AND RECORD

215
V-1

MICROFILMED

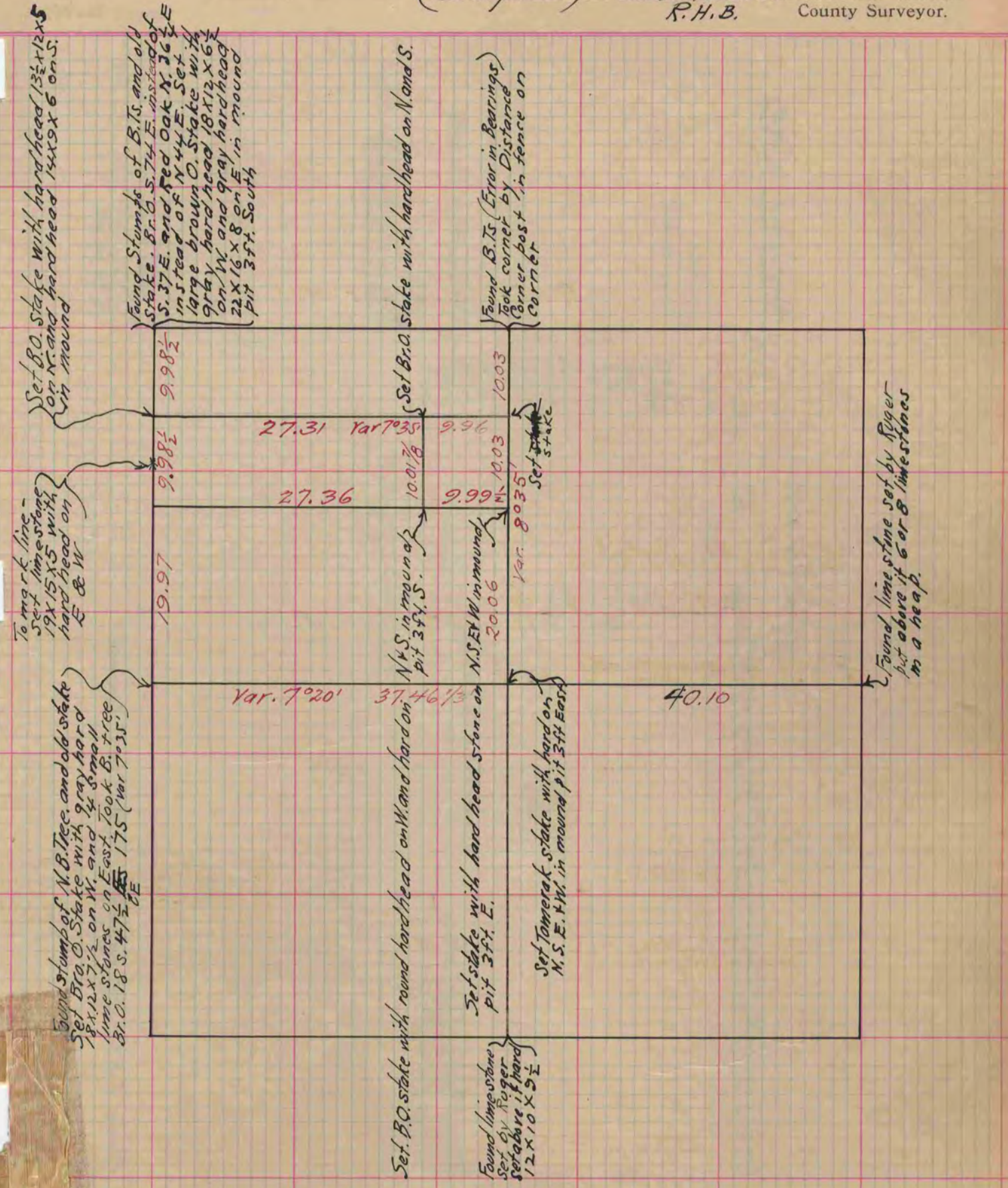
COUNTY BUILDING
CITY OF JANESVILLE

Of a Survey on Section 7 T 3 R 12 E. of the 4 P. M. in Janesville Township

Rock County, Wisconsin, made June the 23 + 24 1864

I hereby certify that the following is a correct record of said survey as made by me.

(Signed) S. D. Locke
R. H. B. County Surveyor.



Copied from upper 1/2 of Page 208 Vol. 1. Original County Surveyors Record