

214  
MICROFILMED

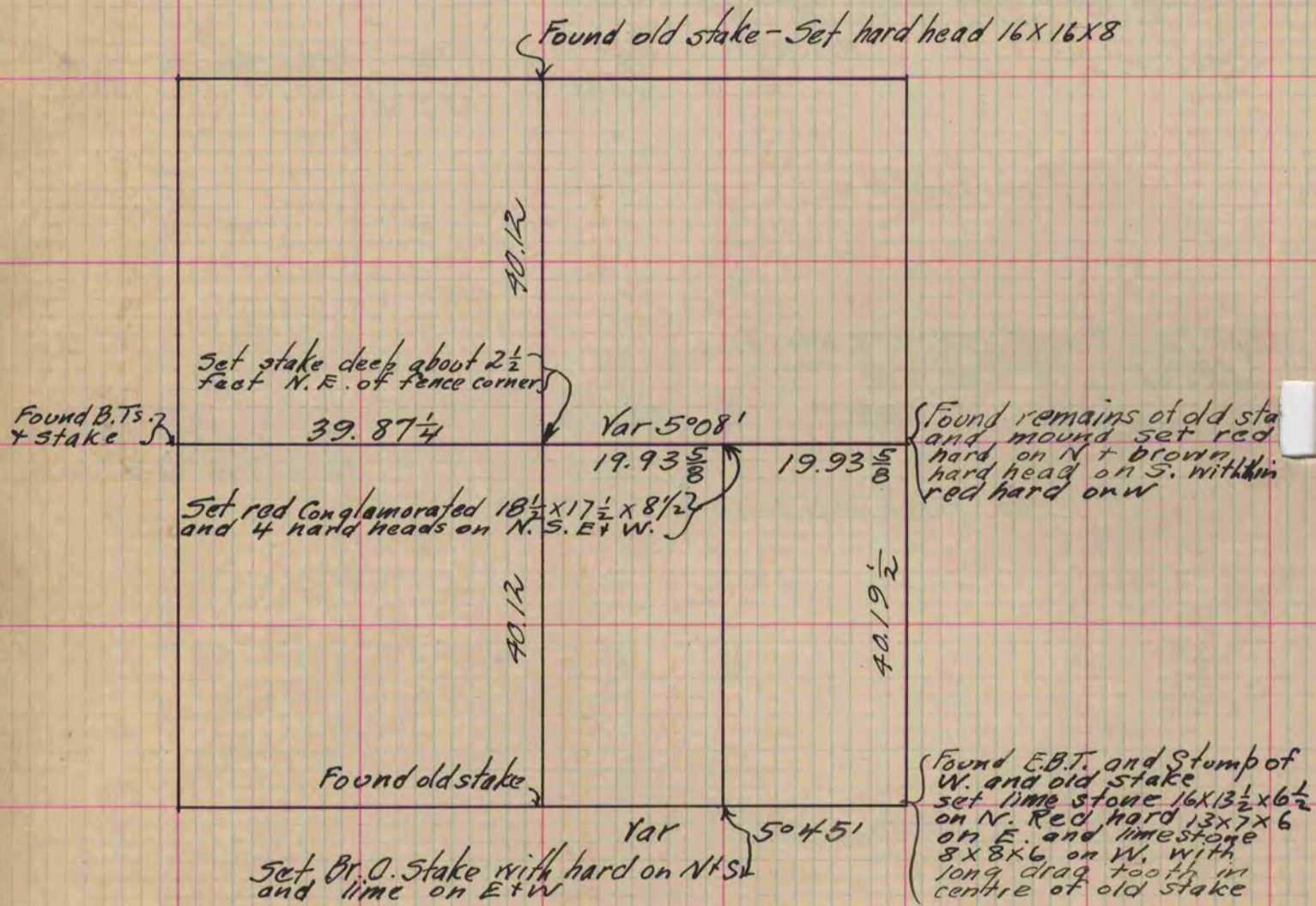
# PLAT AND RECORD

Of a Survey on Section 33 T 4 R 13 E. of the 4 P. M. in Milton Township  
Rock County, Wisconsin, made June the 20<sup>th</sup> 21 1864

I hereby certify that the following is a correct record of said survey as made by me.

COUNTY BUILDING  
CITY OF JANESVILLE

(Signed) J. D. Locke  
R.H.B. County Surveyor.



Copied from Page 207 Vol. 1. Original County Surveyors Record