

MICROFILMED

PLAT AND RECORD

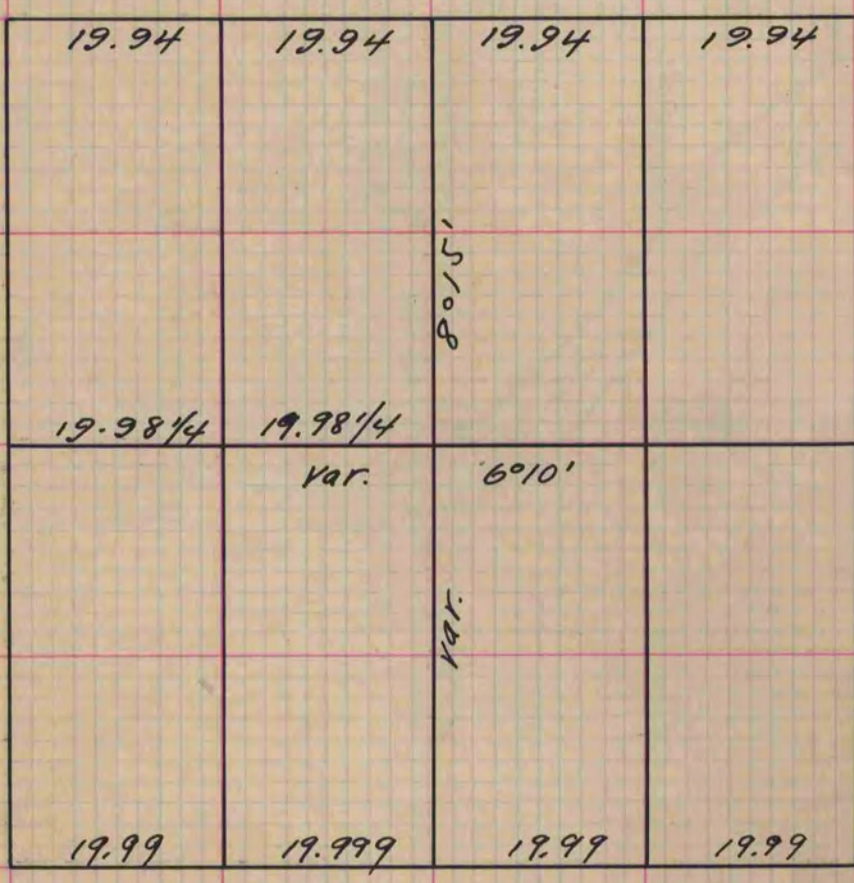
Of a Survey on Section 25 T 3 R 13 E. of the 4 P. M. in Harmony Township

Rock County, Wisconsin, made February the 20th 1860

COUNTY BUILDING
CITY OF JANESVILLE

I hereby certify that the following is a correct record of said survey as made by me.

(Signed) Edward Roger
R.H.B. County Surveyor.



set 2
limestone

Copied From Page 133 Vol. 1. Original County Surveyors Record