

# PLAT AND RECORD VOL. 6

SPRING VALLEY

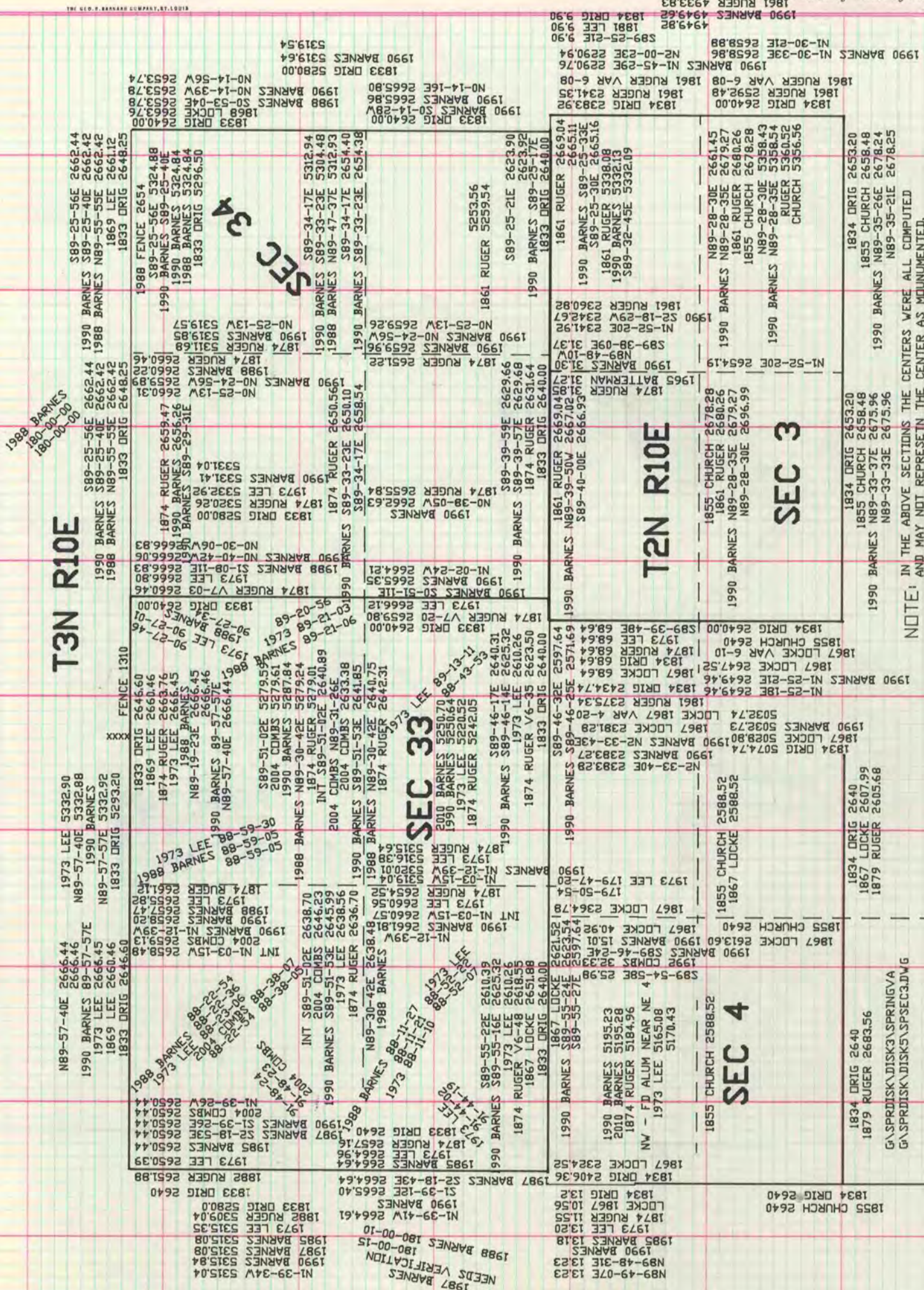
477

Of a Survey on Section 3, 4, 2, 10 T 33, 34 R 3, 10 E. of the 4 P. M. in MAGNOLIA Township

Rock County, Wisconsin, made Feb the 4 1920

I hereby certify that the following is a correct record of said survey as made by me.

*Donald Bains*  
County Surveyor.



T3N R10E

T2N R10E

SEC 3

SEC 3

SEC 33

SEC 4

NOTE: IN THE ABOVE SECTIONS THE CENTERS WERE ALL COMPUTED AND MAY NOT REPRESENT THE CENTER AS MOUNTMENTED. BEARINGS & DISTANCES ARE BASED ON MY RECORD FIELD OBSERVATIONS & ADJUSTMENTS WITH CONTROL STATIONS. THE CONTROL STATION COORDINATES ARE ROCK COUNTY PROJECTION.

1988 BARNES  
180-00-00

1988 BARNES  
180-00-00

1988 BARNES  
180-00-00

1988 BARNES  
180-00-00

1988 BARNES  
180-00-00

1988 BARNES  
180-00-00

1988 BARNES  
180-00-00

1988 BARNES  
180-00-00

1988 BARNES  
180-00-00

1988 BARNES  
180-00-00

1988 BARNES  
180-00-00

1988 BARNES  
180-00-00

1988 BARNES  
180-00-00

1988 BARNES  
180-00-00

1988 BARNES  
180-00-00

1988 BARNES  
180-00-00

1988 BARNES  
180-00-00

1988 BARNES  
180-00-00

1988 BARNES  
180-00-00

1988 BARNES  
180-00-00

1988 BARNES  
180-00-00

1988 BARNES  
180-00-00

1988 BARNES  
180-00-00

1988 BARNES  
180-00-00

1988 BARNES  
180-00-00

1988 BARNES  
180-00-00

1988 BARNES  
180-00-00

1988 BARNES  
180-00-00

1988 BARNES  
180-00-00

1988 BARNES  
180-00-00

1988 BARNES  
180-00-00

1988 BARNES  
180-00-00

1988 BARNES  
180-00-00

1988 BARNES  
180-00-00

1988 BARNES  
180-00-00

1988 BARNES  
180-00-00

1988 BARNES  
180-00-00

1988 BARNES  
180-00-00

1988 BARNES  
180-00-00

1988 BARNES  
180-00-00

1988 BARNES  
180-00-00

1988 BARNES  
180-00-00

1988 BARNES  
180-00-00

1988 BARNES  
180-00-00

1988 BARNES  
180-00-00

1988 BARNES  
180-00-00

1988 BARNES  
180-00-00

1988 BARNES  
180-00-00

1988 BARNES  
180-00-00

1988 BARNES  
180-00-00

1988 BARNES  
180-00-00

1988 BARNES  
180-00-00

1988 BARNES  
180-00-00

1988 BARNES  
180-00-00

1988 BARNES  
180-00-00

1988 BARNES  
180-00-00

1988 BARNES  
180-00-00

1988 BARNES  
180-00-00

1988 BARNES  
180-00-00

1988 BARNES  
180-00-00

1988 BARNES  
180-00-00

1988 BARNES  
180-00-00

1988 BARNES  
180-00-00

1988 BARNES  
180-00-00

1988 BARNES  
180-00-00

1988 BARNES  
180-00-00

1988 BARNES  
180-00-00

1988 BARNES  
180-00-00

1988 BARNES  
180-00-00

1988 BARNES  
180-00-00

1988 BARNES  
180-00-00

1988 BARNES  
180-00-00

1988 BARNES  
180-00-00

1988 BARNES  
180-00-00

1988 BARNES  
180-00-00

1988 BARNES  
180-00-00

1988 BARNES  
180-00-00

1988 BARNES  
180-00-00

1988 BARNES  
180-00-00

1988 BARNES  
180-00-00

1988 BARNES  
180-00-00

1988 BARNES  
180-00-00

1988 BARNES  
180-00-00

1988 BARNES  
180-00-00

1988 BARNES  
180-00-00

1988 BARNES  
180-00-00

1988 BARNES  
180-00-00

1988 BARNES  
180-00-00

1988 BARNES  
180-00-00

1988 BARNES  
180-00-00

1988 BARNES  
180-00-00

1988 BARNES  
180-00-00

1988 BARNES  
180-00-00

1988 BARNES  
180-00-00

1988 BARNES  
180-00-00

1988 BARNES  
180-00-00

1988 BARNES  
180-00-00

1988 BARNES  
180-00-00

1988 BARNES  
180-00-00

1988 BARNES  
180-00-00

1988 BARNES  
180-00-00

1988 BARNES  
180-00-00

1988 BARNES  
180-00-00

1988 BARNES  
180-00-00

1988 BARNES  
180-00-00

1988 BARNES  
180-00-00

1988 BARNES  
180-00-00

1988 BARNES  
180-00-00

1988 BARNES  
180-00-00

1988 BARNES  
180-00-00

1988 BARNES  
180-00-00

1988 BARNES  
180-00-00

1988 BARNES  
180-00-00

1988 BARNES  
180-00-00

1988 BARNES  
180-00-00

1988 BARNES  
180-00-00

1988 BARNES  
180-00-00

1988 BARNES  
180-00-00

1988 BARNES  
180-00-00

1988 BARNES  
180-00-00

1988 BARNES  
180-00-00

1988 BARNES  
180-00-00

1988 BARNES  
180-00-00

1988 BARNES  
180-00-00

1988 BARNES  
180-00-00

1988 BARNES  
180-00-00

1988 BARNES  
180-00-00

1988 BARNES  
180-00-00

1988 BARNES  
180-00-00

1988 BARNES  
180-00-00

1988 BARNES  
180-00-00

1988 BARNES  
180-00-00

1988 BARNES  
180-00-00

1988 BARNES  
180-00-00

1988 BARNES  
180-00-00

1988 BARNES  
180-00-00

1988 BARNES  
180-00-00

1988 BARNES  
180-00-00

1988 BARNES  
180-00-00

1988 BARNES  
180-00-00

1988 BARNES  
180-00-00

1988 BARNES  
180-00-00

1988 BARNES  
180-00-00

1988 BARNES  
180-00-00

1988 BARNES  
180-00-00

1988 BARNES  
180-00-00

1988 BARNES  
180-00-00

1988 BARNES  
180-00-00

1988 BARNES  
180-00-00

1988 BARNES  
180-00-00

1988 BARNES  
180-00-00

1988 BARNES  
180-00-00

1988 BARNES  
180-00-00

1988 BARNES  
180-00-00

1988 BARNES  
180-00-00

1988 BARNES  
180-00-00

1988 BARNES  
180-00-00

1988 BARNES  
180-00-00

1988 BARNES  
180-00-00

1988 BARNES  
180-00-00

1988 BARNES  
180-00-00

1988 BARNES  
180-00-00

1988 BARNES  
180-00-00

1988 BARNES  
180-00-00

1988 BARNES  
180-00-00

1988 BARNES  
180-00-00

1988 BARNES  
180-00-00

1988 BARNES  
180-00-00

1988 BARNES  
180-00-00

1988 BARNES  
180-00-00

1988 BARNES  
180-00-00

1988 BARNES  
180-00-00

1988 BARNES  
180-00-00

1988 BARNES  
180-00-00

1988 BARNES  
180-00-00

1988 BARNES  
180-00-00

1988 BARNES  
180-00-00

1988 BARNES  
180-00-00

1988 BARNES  
180-00-00

1988 BARNES  
180-00-00

1988 BARNES  
180-00-00

1988 BARNES  
180-00-00

1988 BARNES  
180-00-00

1988 BARNES  
180-00-00

1988 BARNES  
180-00-00

1988 BARNES  
180-00-00

1988 BARNES  
180-00-00

1988 BARNES  
180-00-00

1988 BARNES  
180-00-00

1988 BARNES  
180-00-00

1988 BARNES  
180-00-00

1988 BARNES  
180-00-00

1988 BARNES  
180-00-00

1988 BARNES  
180-00-00

1988 BARNES  
180-00-00

1988 BARNES  
180-00-00

1988 BARNES  
180-00-00

1988 BARNES  
180-00-00

1988 BARNES  
180-00-00

1988 BARNES  
180-00-00

1988 BARNES  
180-00-00

1988 BARNES  
180-00-00

1988 BARNES  
180-00-00

1988 BARNES  
180-00-00

1988 BARNES  
180-00-00

1988 BARNES  
180-00-00

1988 BARNES  
180-00-00

1988 BARNES  
180-00-00