

PLAT AND RECORD

VOL. 5

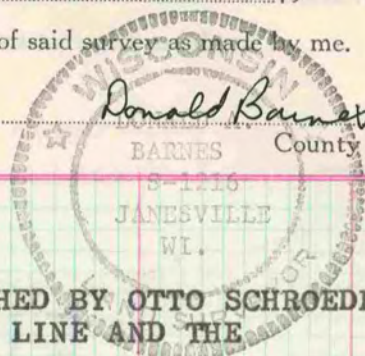
469

COUNTY BUILDING
CITY OF JANESVILLE

Of a Survey on Section 9 T. 4 R. 10 E. of the 4 P. M. in UNION Township

Rock County, Wisconsin, made AUGUST the 5 19 78

I hereby certify that the following is a correct record of said survey as made by me.



CENTER OF SECTION 9 WAS ESTABLISHED BY OTTO SCHROEDER
BY THE INTERSECTION OF THE N/S $\frac{1}{4}$ LINE AND THE
E/W $\frac{1}{4}$ LINE. SET ALUM MON.

MICROFILMED