

PLAT AND RECORD

461

VOL. 5

COUNTY BUILDING
CITY OF JANESVILLE

Of a Survey on Section 34, 35 T 1 R 13 E. of the 4 P. M. in TURTLE Township

Rock County, Wisconsin, made JULY the 27 19 78

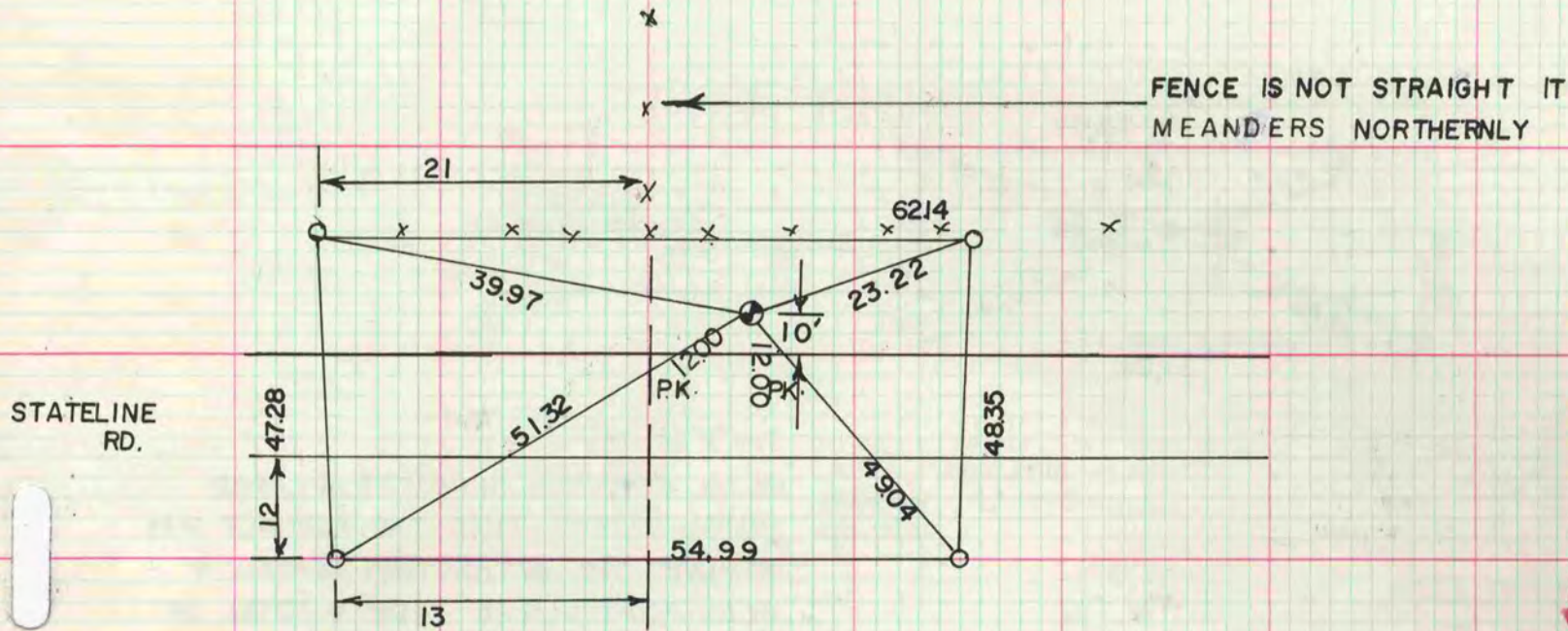
I hereby certify that the following is a correct record of said survey as made by me.



County Surveyor.

SW COR SEC 35

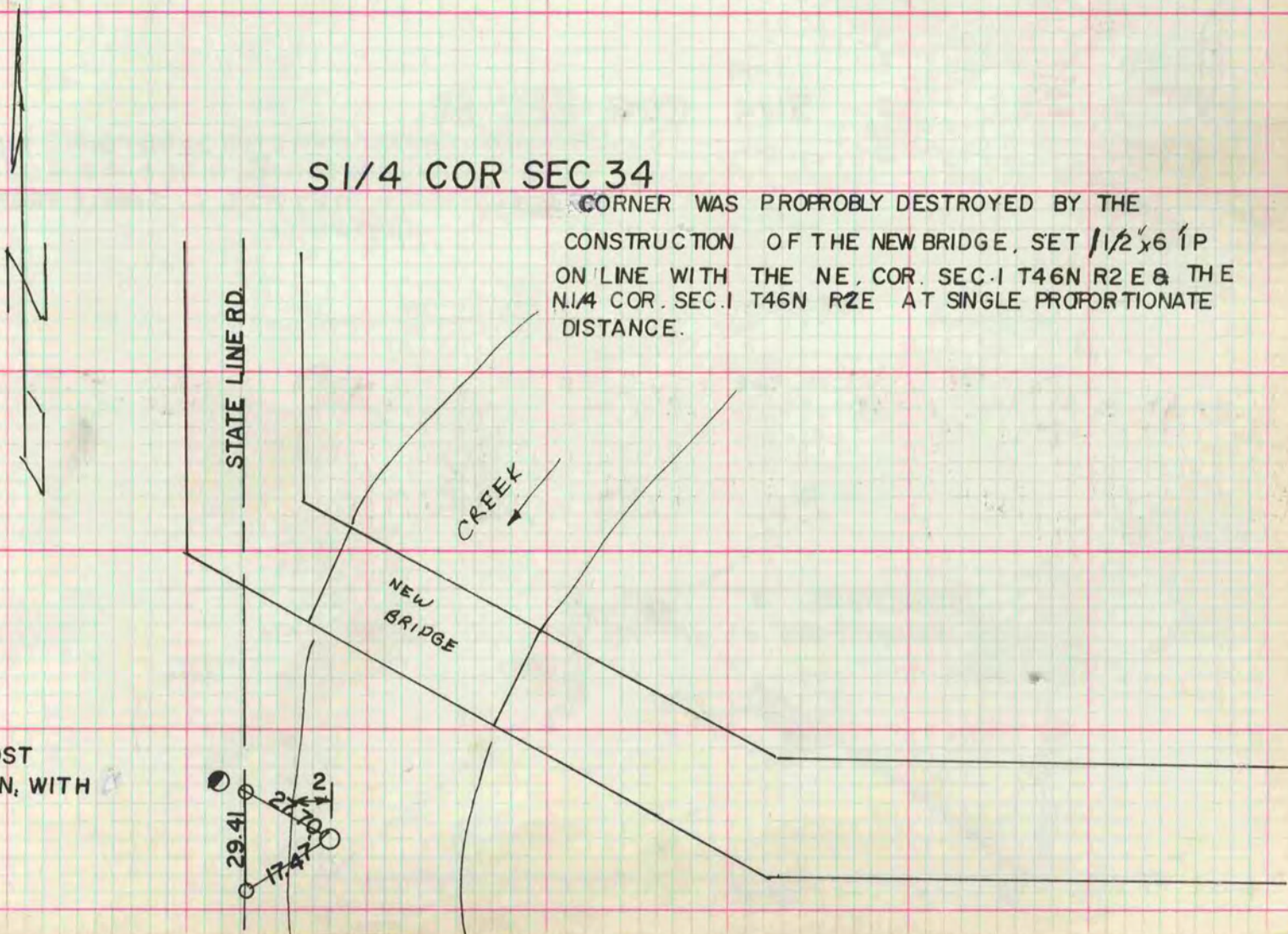
DUG & FOUND NOTHING SET ALUM. MON. 1 DEEP ON LINE WITH S. 1/4 COR. SEC. 1 T. 46N R2 E AT SINGLE PROPORTIONATE DISTANCE.



MICROFILMED

S 1/4 COR SEC 34

CORNER WAS PROBABLY DESTROYED BY THE CONSTRUCTION OF THE NEW BRIDGE, SET 1/2' x 6' IP ON LINE WITH THE NE COR. SEC. 1 T46N R2 E & THE N. 1/4 COR. SEC. 1 T46N R2 E AT SINGLE PROPORTIONATE DISTANCE.



- R/W POST
- G-1 MON, WITH CAP.