

PLAT AND RECORD

VOL. 6

Of a Survey on Section **18** T **2** R **15** E. of the 4 P. M. in **DARIEN** Township

Rock County, Wisconsin, made **JAN.** the **9th** 19**81**

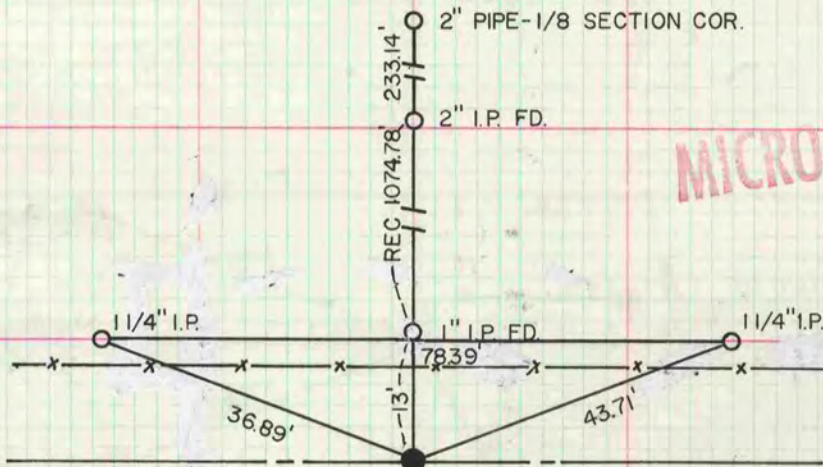
I hereby certify that the following is a correct record of said survey as made by me.

**COUNTY BUILDING
CITY OF JANESVILLE**

Donald Barnes
County Surveyor.

SW COR SEC 18

DATA SUPPLIED BY WALWORTH COUNTY SURVEYORS OFFICE



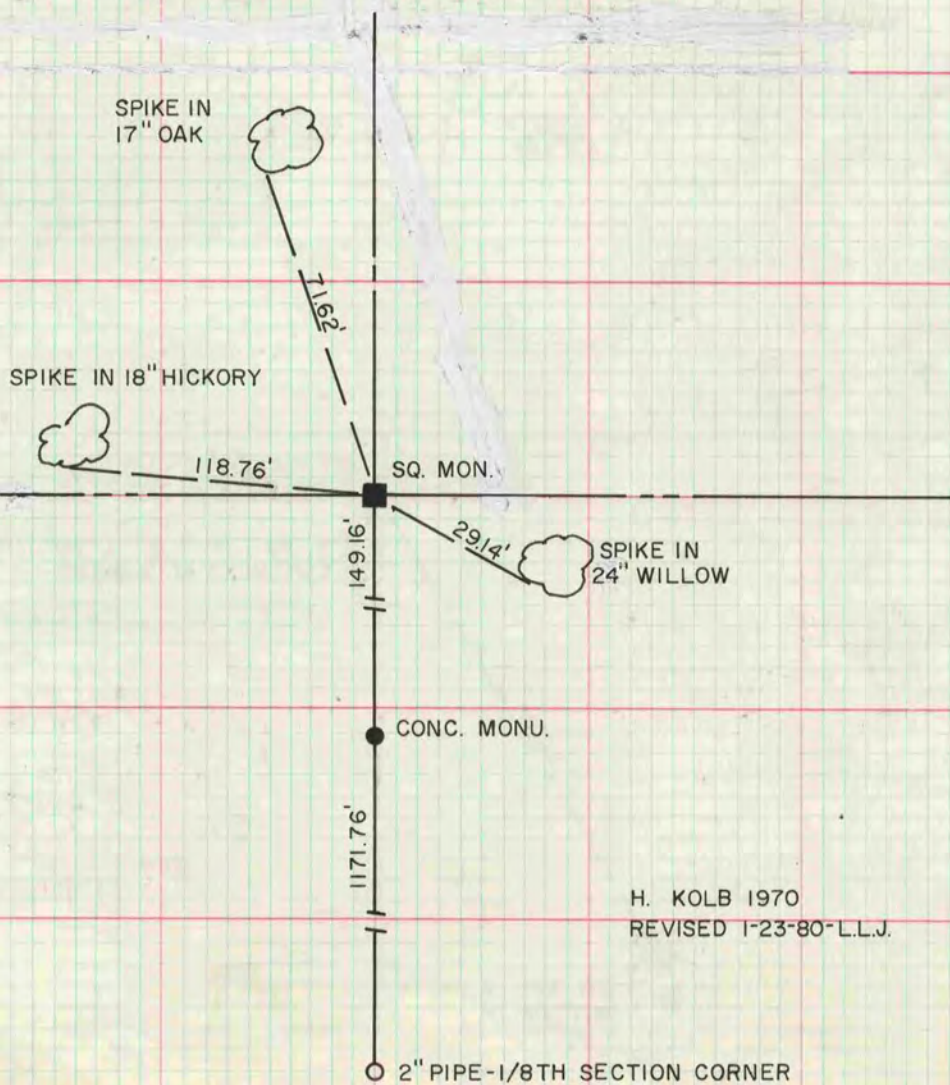
I HEREBY CERTIFY THAT I SET AN ALUMINUM 16" DEEP ON LINE WITH FOUND I.P. AT RECORD DISTANCE.

DEC. 1, 1977 **DONALD BARNES**
SURVEYOR

REVISED 1-23-80-L.L.J.

W1/4 COR SEC 18

DATA SUPPLIED BY WALWORTH COUNTY SURVEYORS OFFICE



H. KOLB 1970
REVISED 1-23-80-L.L.J.