

PLAT AND RECORD

161

VOL. 6

Of a Survey on Section 1, 12 T 1 R 10 E. of the 4 P. M. in Township
Rock County, Wisconsin, made APRIL 16 1981

I hereby certify that the following is a correct record of said survey as made by me.

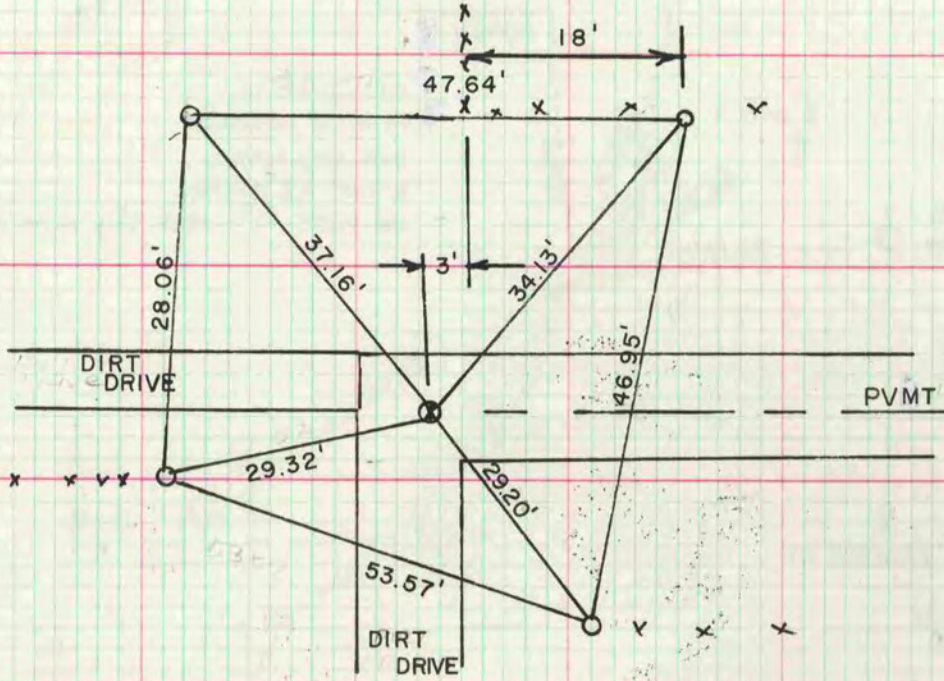
COUNTY BUILDING
CITY OF JANESVILLE

Donald Barnes
County Surveyor.



S 1/4 COR SEC 1

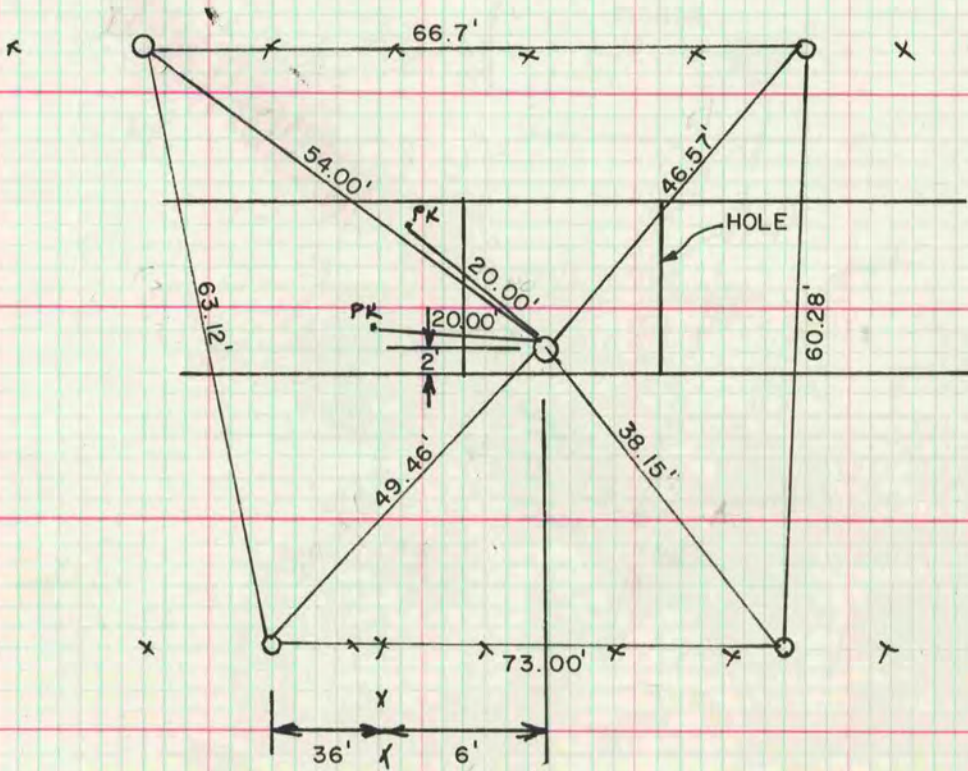
DUG AND FOUND HH 18X10X5 ON STAKE @ 2HH & 2 LIMESTONES.



O - 3/8" x 26" BOLTS

W 1/4 COR SEC 12

DUG LARGE 4' DEEP HOLE & FOUND 2"X42" IP. 1 1/2' N OF IP FOUND
4 FLAT STONES, MONUMENTED IP AS CORNER



MICROFILMED