

PLAT AND RECORD

COUNTY BUILDING
CITY OF JANESVILLE

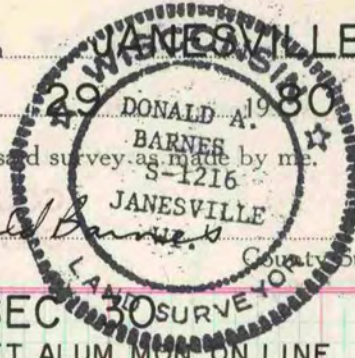
VOL. 6

Of a Survey on Section 30 T 3 R 12 E. of the 4 P. M. in _____ Township

Rock County, Wisconsin, made DEC. the _____

I hereby certify that the following is a correct record of said survey as made by me.

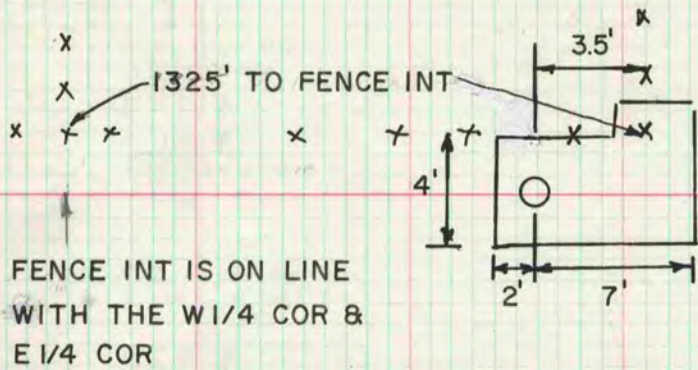
COUNTY BUILDING
CITY OF JANESVILLE



County Surveyor.

E 1/4 COR SEC 30

DUG 2.5' DEEP & FOUND NOTHING. SET ALUM MON ON LINE WITH THE NE & SE CORERS OF SEC 30 AT SINGLE PROPORTIONATE DISTANCE.



MICROFILMED

COMPUTING THE CENTER OF THE SECTION BY INTERSECTING E/W & N/S 1/4 LINES DOES NOT AGREE WITH THE DISTANCES SHOWN BY RUGER IN 1860.

THE FOLLOWING TABULATED DATA SHOW'S RUGER'S OTHER DISTANCES ARE IN HARMONY WITH MEASURED DISTANCES.

RUGER 1860	COMPUTED	PRORATED	DIFF IN PRORATED & COMPUTED
2465.74 NW TO N¼	2471.37	2472.07	.7
2663.76 N¼ TO NE	2667.38	2668.43	1.05
5131.50 W¼ TO E¼	5138.97	5140.51	1.5
2471.04 SW TO S¼	2476.13	2475.38	.75
2670.36 SW TO W¼	2676.35	2675.05	1.3
5321.58 SE TO NE	5332.16	5330.92	1.2
<u>20725.98</u> TOTAL	<u>20762.36</u>		

$$\frac{\text{COMPUTED } 20762.36}{\text{RUGER } 20725.98} = \frac{(\text{PRORATED}) \times}{\text{RUGER'S REC}}$$

RUGER 1860	COMPUTED	PRORATED	DIFF IN PRORATED & COMPUTED USING THE ABOVE DATA
5338.05 N¼ TO S¼	5339.89	5347.42	7.5