

**MICROFILMED**

# PLAT AND RECORD

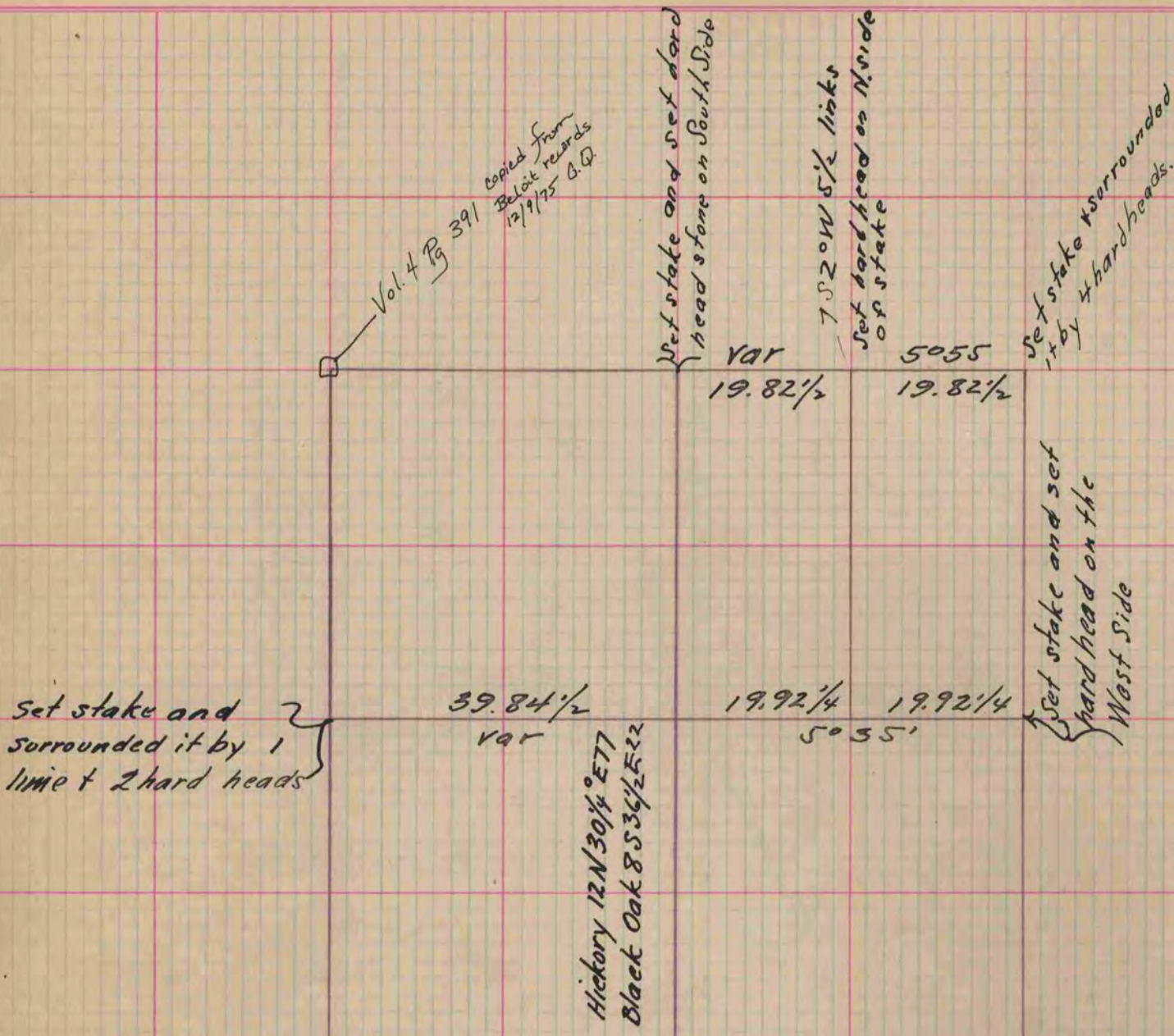
Of a Survey on Section 12 T 1 R 14 E. of the 4 P. M. in Clinton Township

Rock County, Wisconsin, made April the 26<sup>th</sup> 1861

I hereby certify that the following is a correct record of said survey as made by me.

COUNTY BUILDING  
CITY OF JANESVILLE

(Signed) Edward Ruger  
R.H.B. County Surveyor.



Copied from Page 169 Vol. One - Original County Surveyors Record