

PLAT AND RECORD

MICROFILMED

Of a Survey on Section 9 T 4 R 10 E. of the 4 P. M. in Union Township

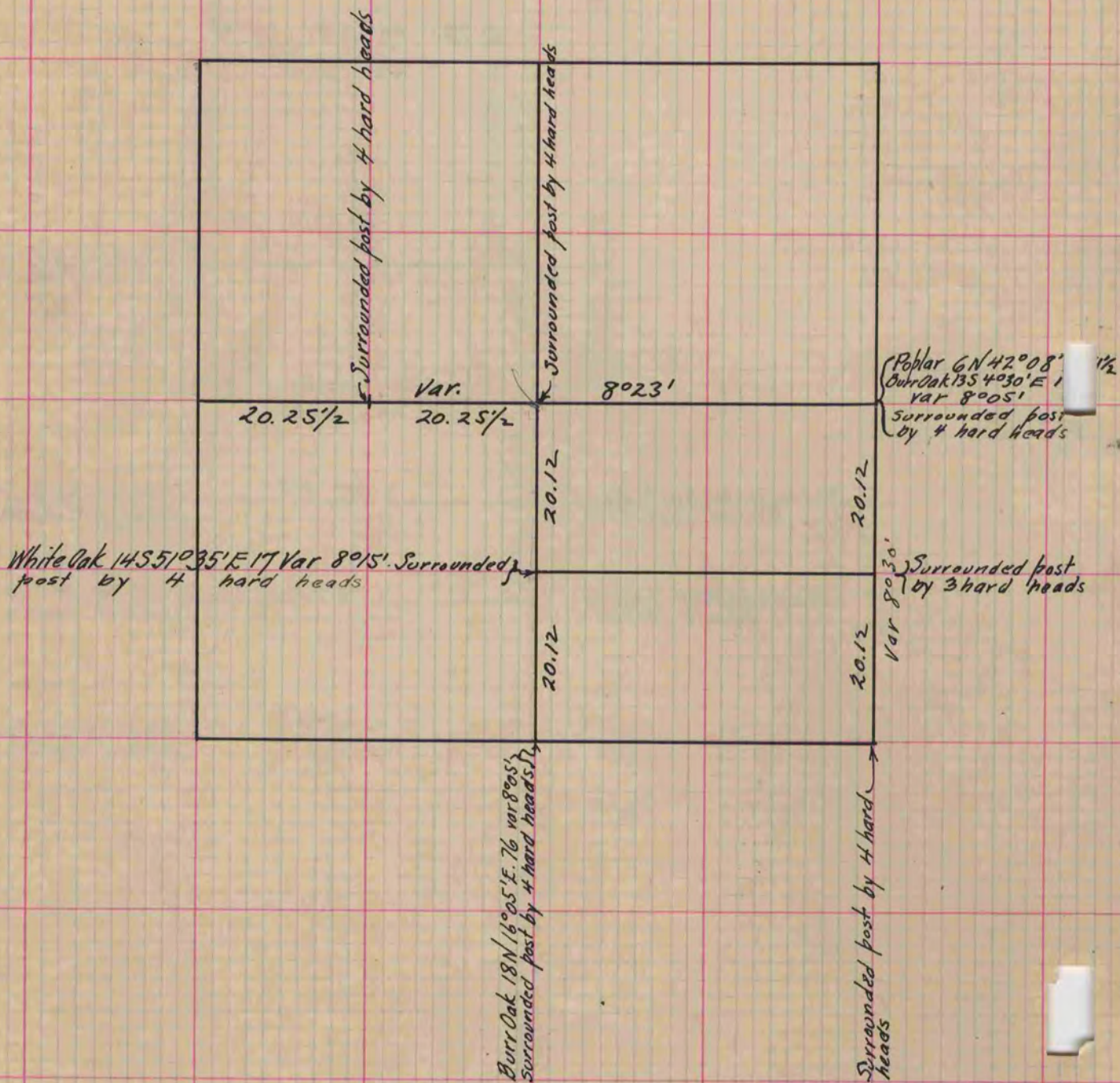
Rock County, Wisconsin, made November the 3rd 1859

I hereby certify that the following is a correct record of said survey as made by me.

COUNTY BUILDING
CITY OF JANESVILLE

(Signed) Edward Reger
R.H.B.

County Surveyor.



Copied from Page 125 Vol. 1. Original County Surveyors Record