

PLAT AND RECORD

61
V-I

MICROFILMED

Of a Survey on Section 5 T 4 R 10 E. of the 4 P. M. in Union Township
Rock County, Wisconsin, made March the 7th 1856

I hereby certify that the following is a correct record of said survey as made by me.

**COUNTY BUILDING
CITY OF JANESVILLE**

(Signed) Joseph Church
R.H.B. County Surveyor.

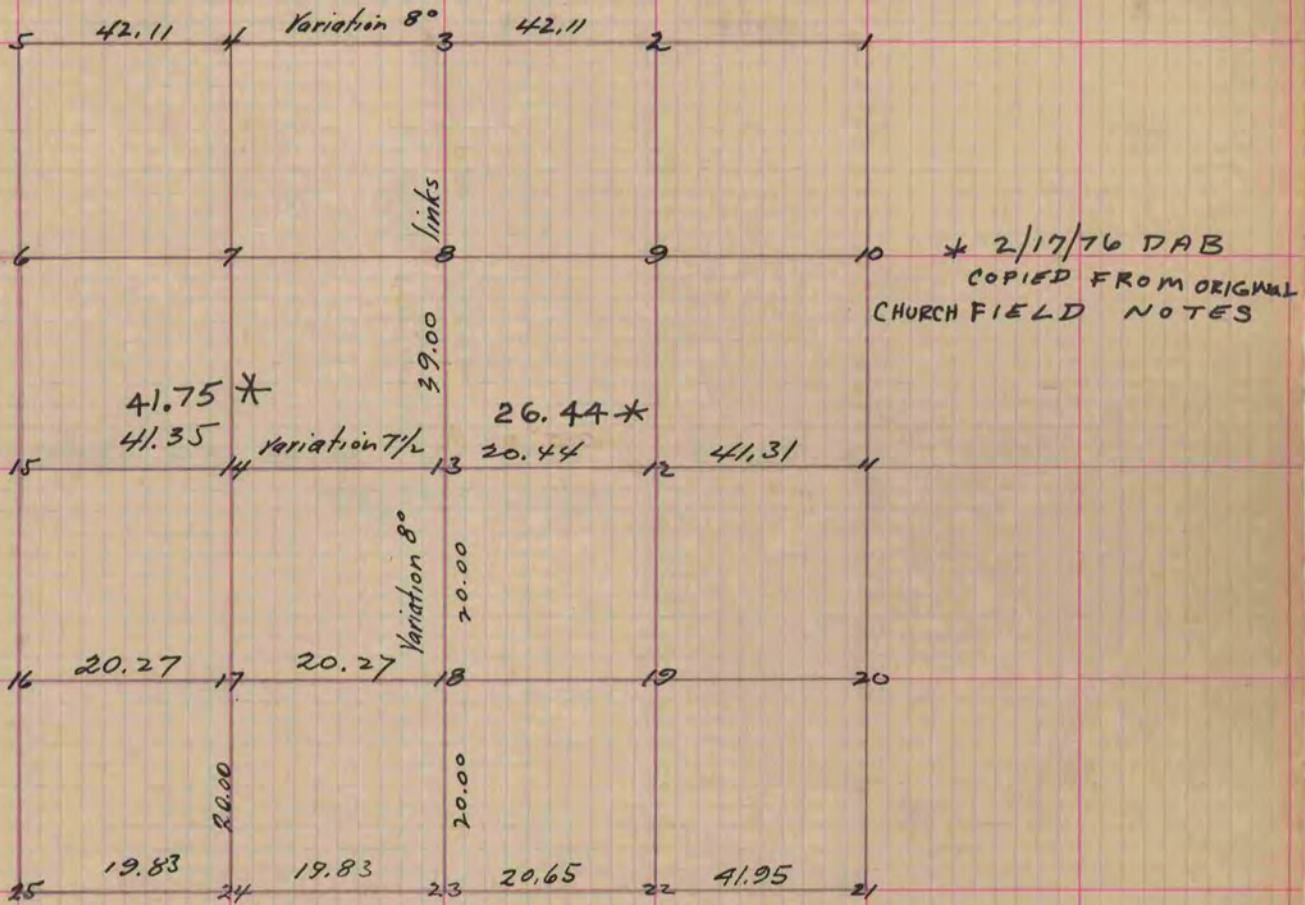


Fig 25 Wit trees in correct took others
Br. O 24 S 58 1/2 E 95
24 N 58 E 94
" 24 18 N 32 1/2 E 15
10 S 81 W 35
" 22 14 N 61 W 83
24 N 81 W 89
" 13 24 S 42 E 147
School house NE Corner
551 E 47
" 12 Bl. O. 12 S. 42 1/2 E 35 1/2
18 N 69 W 110 1/2
" 17 16 S 89 E 6 1/2
Br O 20 S 78 W 106
" 16 Bl. O. 53 SE 74 1/2 Bl. O. 12 NS 2 E 41 1/2

Fig 5 trees mostly decayed
took other trees
Br. O. 20 S. 46 W. 56
" 16 S 73 1/4 E. 88
Fig #3. Bl. O. 10 S. 7 1/4 E. 164
Hickory 5 S 19 W 35 1/2
The above survey was made
March 18th 1856
Joseph Church County Surveyor

Copied from Page 62 Vol. One
Original County Surveyors Record.