

MICROFILMED PLAT AND RECORD

Of a Survey on Section 13 T 1 R 11 E. of the 4 P. M. in Newark Township

Rock County, Wisconsin, made July the 2nd 1863

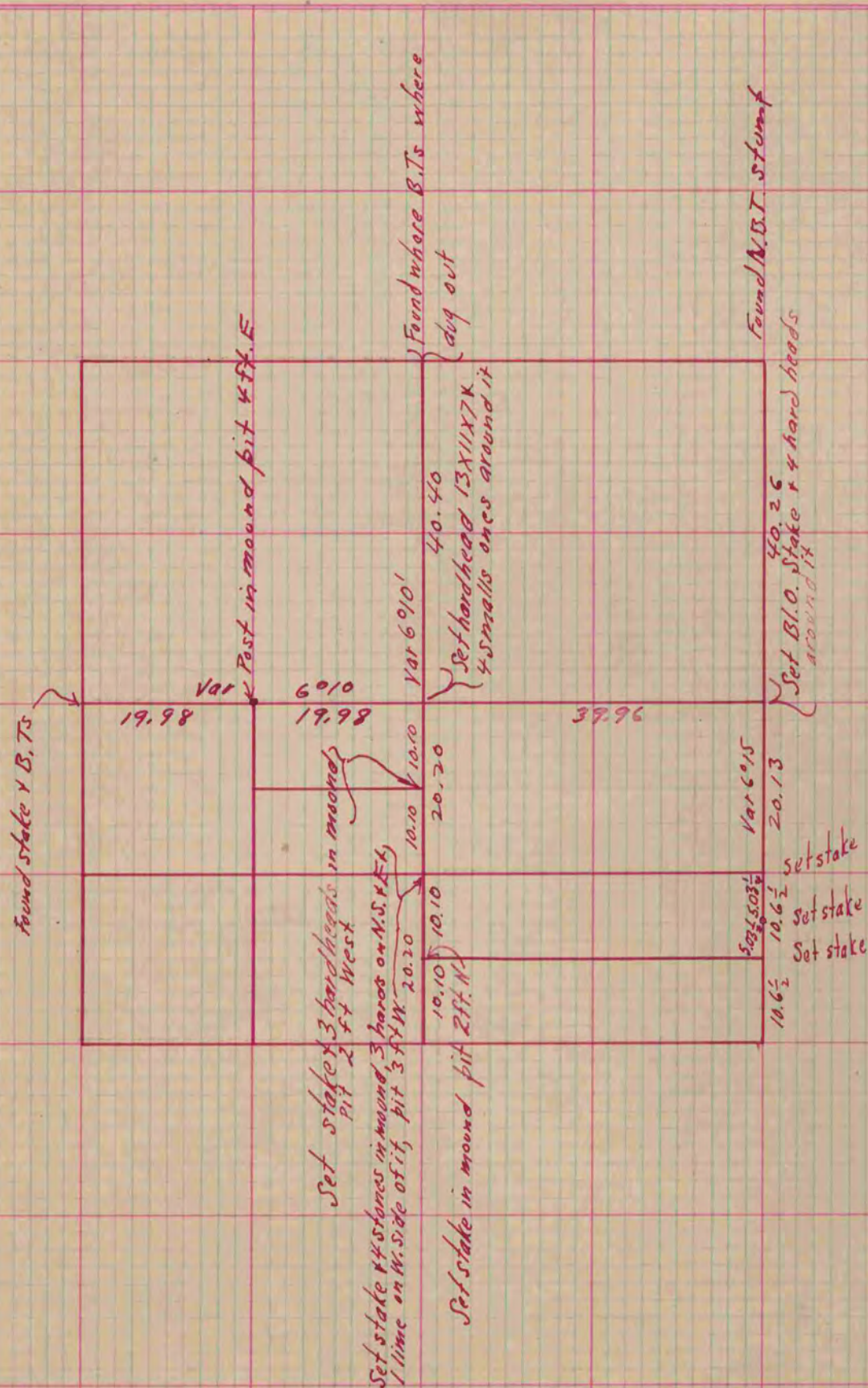
I hereby certify that the following is a correct record of said survey as made by me.

COUNTY BUILDING
CITY OF JANESVILLE

(Signed) S. D. Locke

R. H. B.

County Surveyor.



For South line of Sec. See - Sec. 24 on preceding page

Copied from Upper part of Page 193 Vol. 1. Original County Surveyors Record