

PLAT AND RECORD

115

VOL. 6

Of a Survey on Section 7 T 2 R 15 E. of the 4 P. M. in DARIEN Township
 Rock County, Wisconsin, made JAN. the 9th 1981

I hereby certify that the following is a correct record of said survey as made by me.

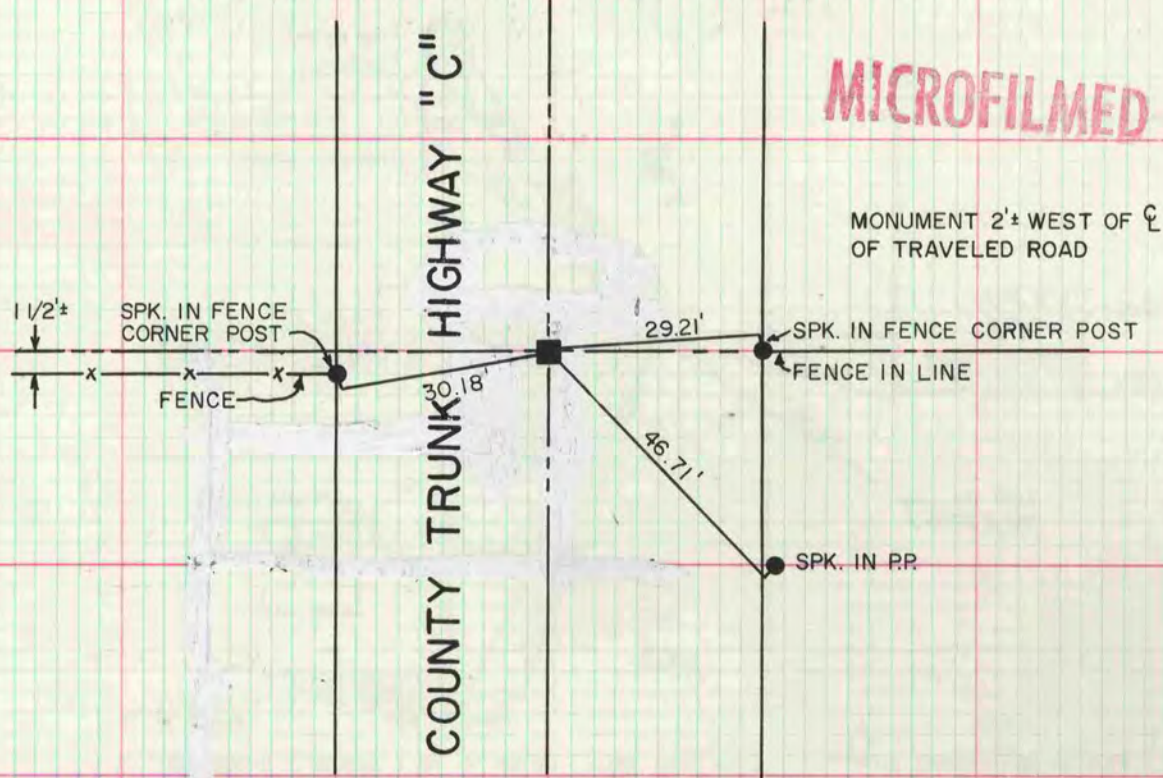
COUNTY BUILDING
 CITY OF JANESVILLE

Donald Barnes

County Surveyor.

W1/4 COR SEC 7

DATA SUPPLIED BY WALWORTH COUNTY SURVEYORS OFFICE



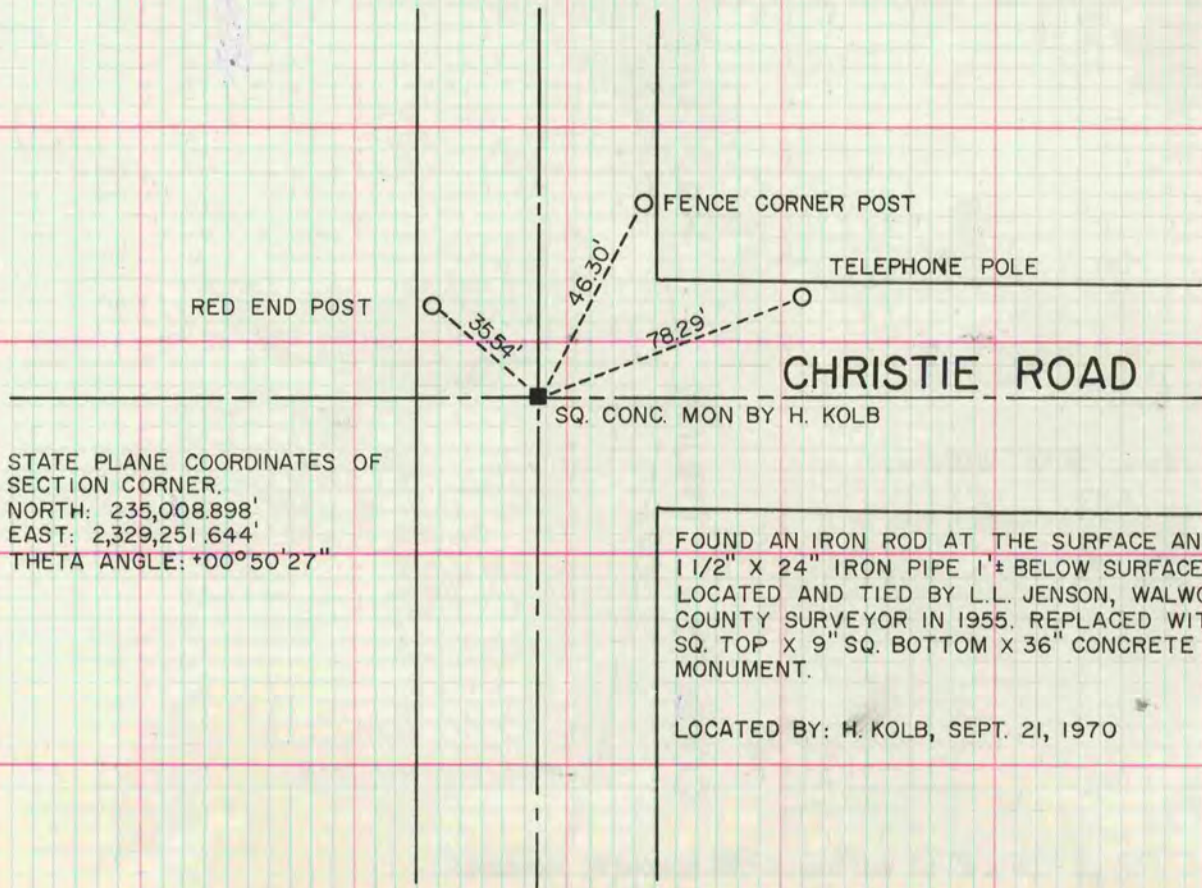
MICROFILMED

FOUND A LIMESTONE MONUMENT 20" LONG, VERIFIED BY J. CHILD IN AUG. OF 1883. UNDER LIMESTONE FOUND MARK OF 3" DIA. STAKE. SET 6" SQ. BY 9" SQ. BOTTOM BY 36" CONCRETE MONUMENT.

STATE PLANE COORDINATES OF: SECTION CORNER LOCATED BY H. KOLB, SEPT 25, 1970
 NORTH: 237,659.600' THETA ANGLE: +00°55'26"
 EAST: 2,329,175.368'

SW COR SEC 7

DATA SUPPLIED BY WALWORTH COUNTY SURVEYORS OFFICE



STATE PLANE COORDINATES OF SECTION CORNER.
 NORTH: 235,008.898'
 EAST: 2,329,251.644'
 THETA ANGLE: +00°50'27"

FOUND AN IRON ROD AT THE SURFACE AND A 1 1/2" X 24" IRON PIPE 1'± BELOW SURFACE. LOCATED AND TIED BY L.L. JENSON, WALWORTH COUNTY SURVEYOR IN 1955. REPLACED WITH 6" SQ. TOP X 9" SQ. BOTTOM X 36" CONCRETE MONUMENT.

LOCATED BY: H. KOLB, SEPT. 21, 1970