

# PLAT AND RECORD

COUNTY BUILDING  
CITY OF JANESVILLE

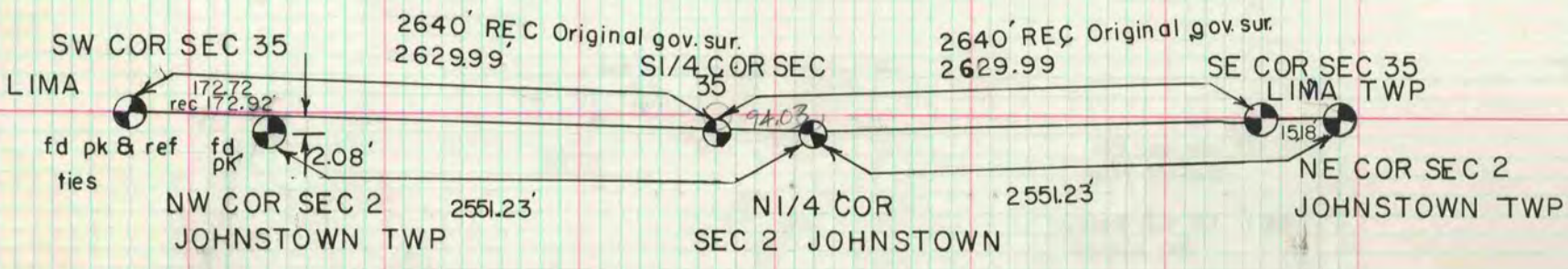
Of a Survey on Section **35** T **4** R **14** E. of the 4 P. M. in **JOHNSTOWN** Township

Rock County, Wisconsin, made **NOVEMBER** the **2** 1976

I hereby certify that the following is a correct record of said survey as made by me.



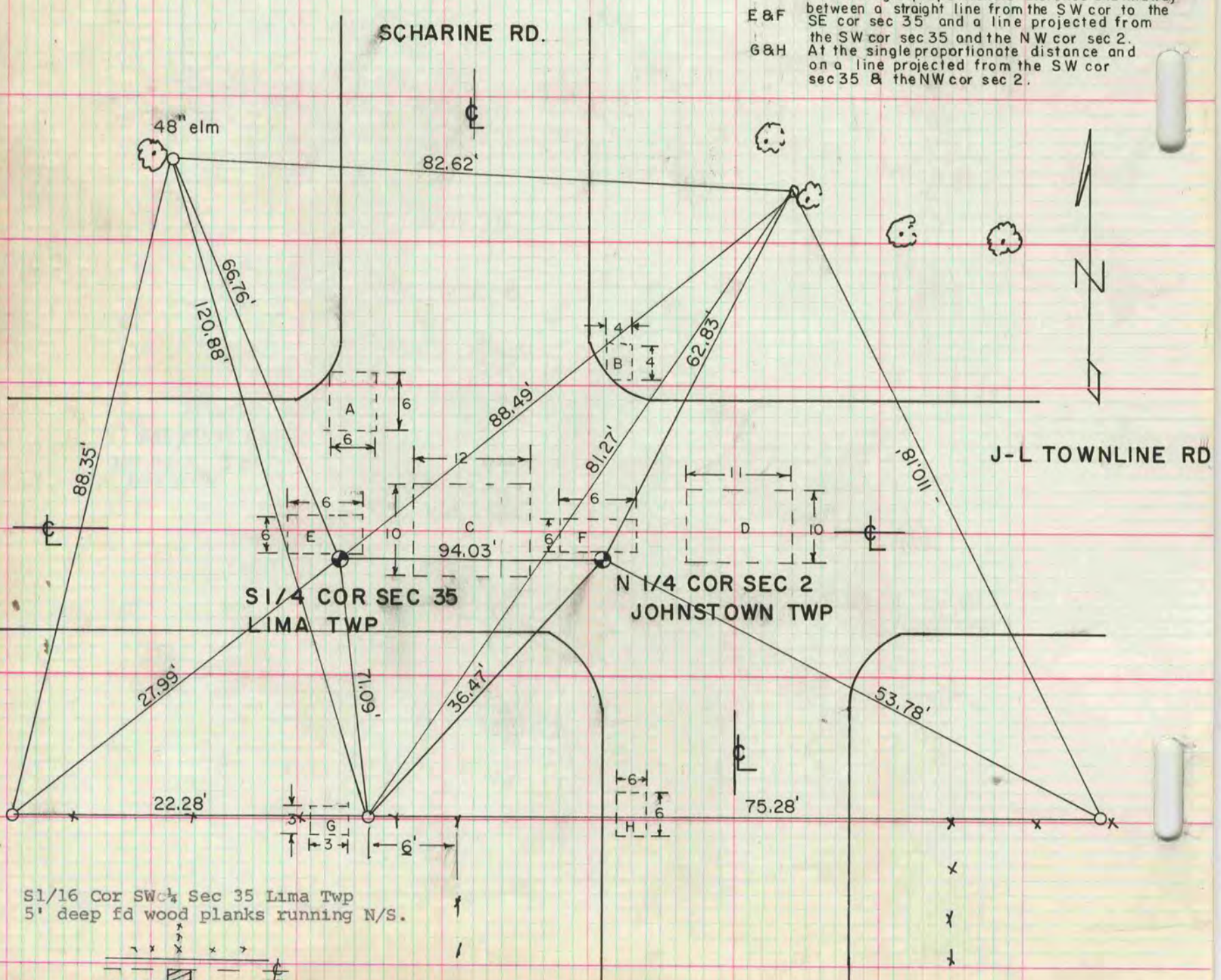
**MICROFILMED**



Set the N $\frac{1}{4}$  cor sec 2 Johnstown Twp. midway between the NE & NW cor Sec 2 and midway between a line from the SW Cor Sec 35 and the NE Cor Sec 2 and a line projected from the SW Cor Sec 35 Lima Twp and the NW cor Sec 2 Johnstown Twp.

Set the S $\frac{1}{4}$  Cor Sec 35 Lima Twp at single proportionate distance and midway between a line from the SW & SE Cor Sec 35 and a line projected from the SW Cor Sec 35 and the NW Cor Sec 2 Johnstown Twp.

HOLE	LOCATION
A	On line with sw & se cor sec 35 & at single proportionate distance
B	Same as A
C	AT the intersection of the $\text{C}$ of the roads
D	Same as C
E & F	At the single proportionate distance and midway between a straight line from the SW cor to the SE cor sec 35 and a line projected from the SW cor sec 35 and the NW cor sec 2.
G & H	At the single proportionate distance and on a line projected from the SW cor sec 35 & the NW cor sec 2.



S1/16 Cor SW $\frac{1}{4}$  Sec 35 Lima Twp  
5' deep fd wood planks running N/S.

